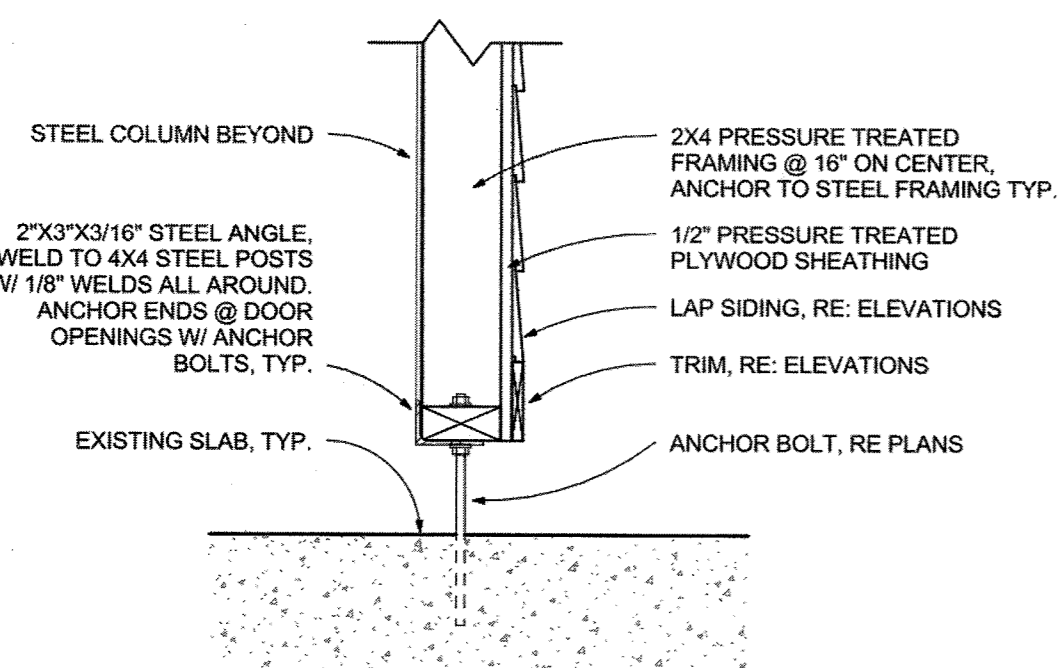
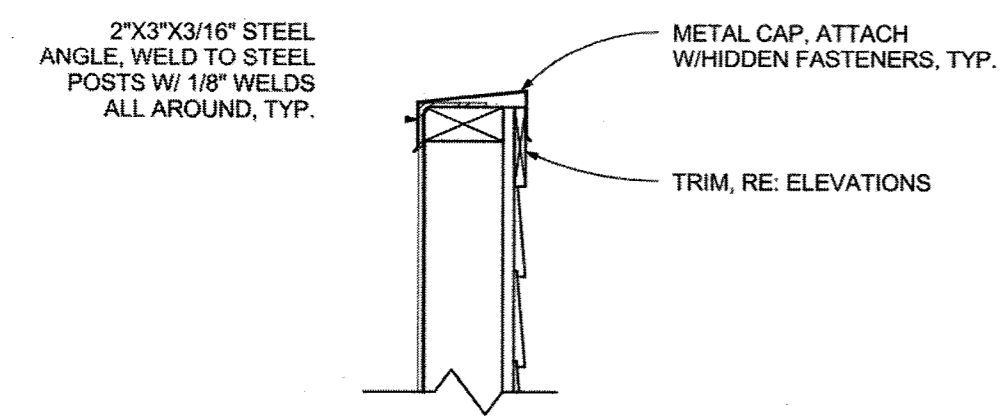
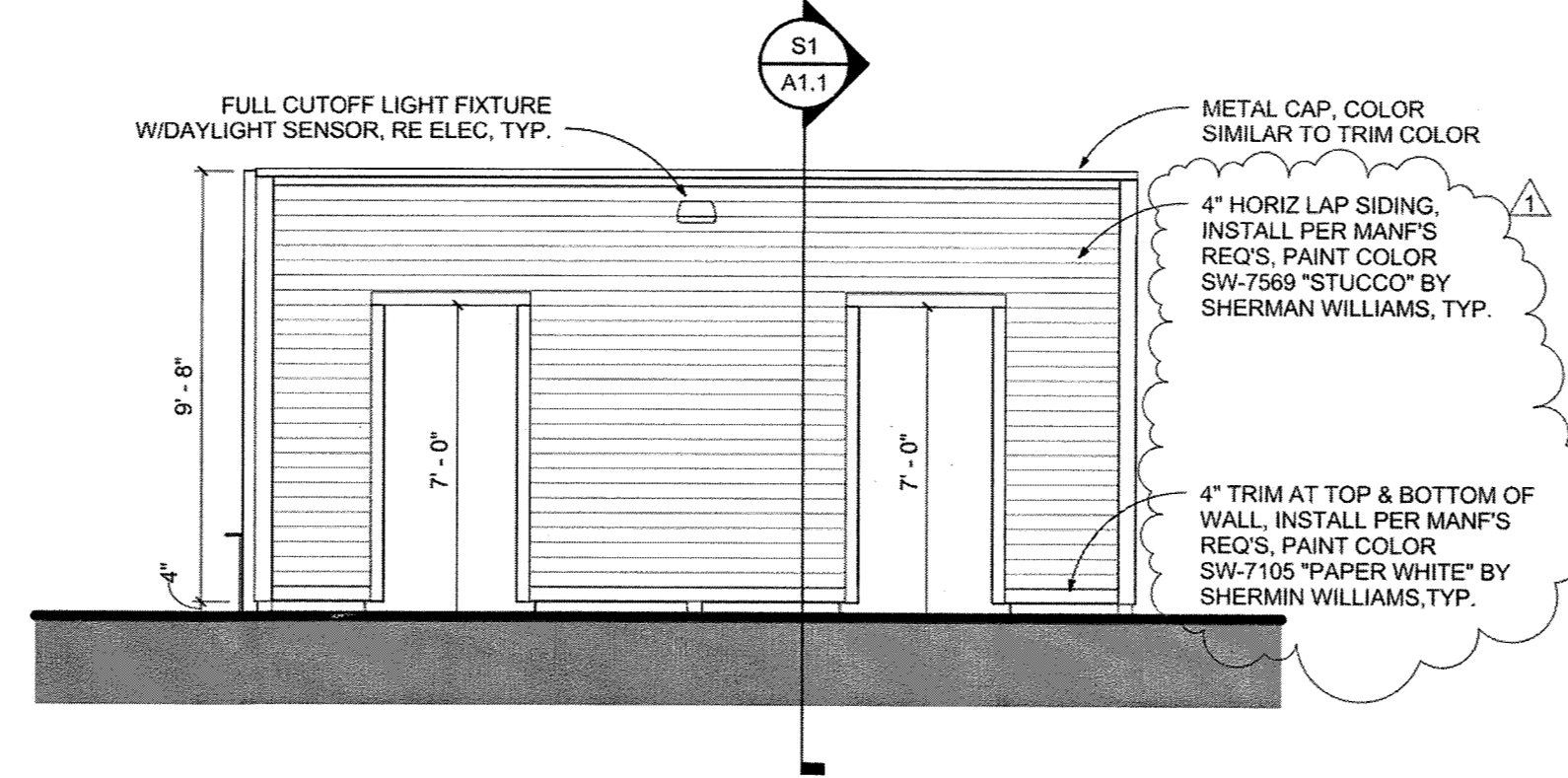


ROLLING HILLS SITE DEVELOPMENT PLAN

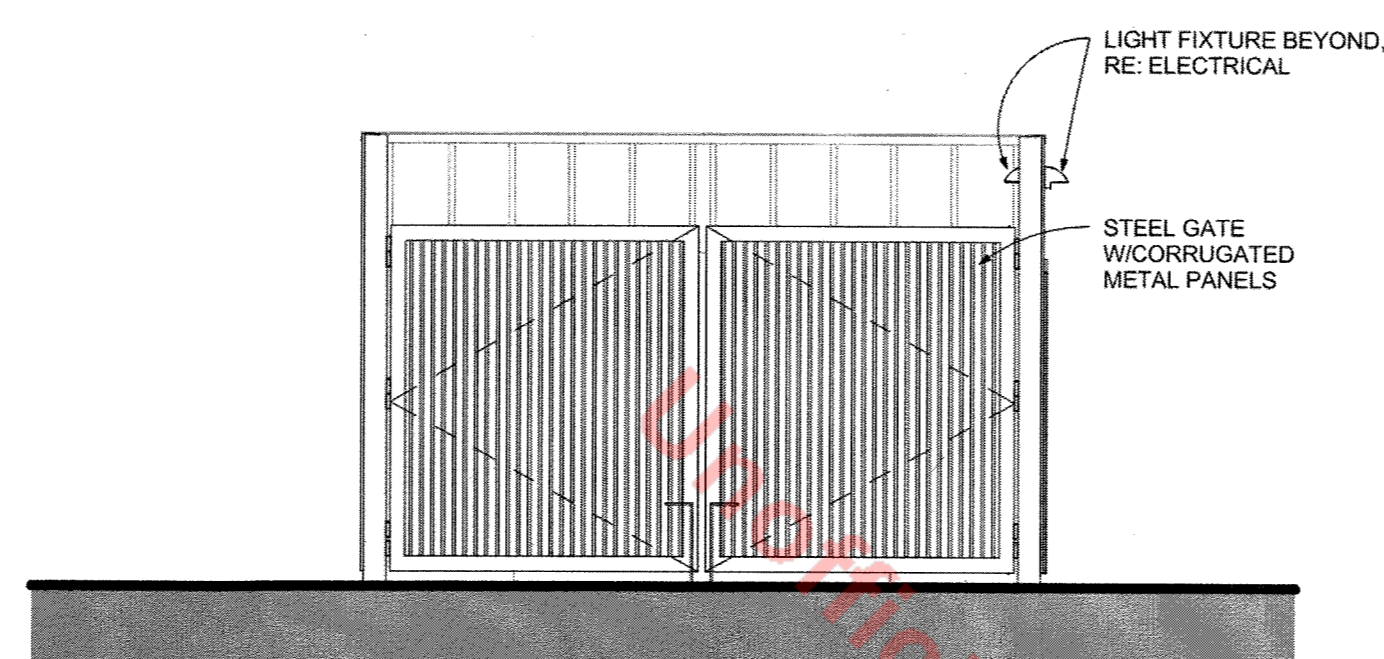
LOCATED WITHIN THE NE 1/4 OF SECTION 13 TOWNSHIP 8 S, RANGE 67 W, 6TH P.M.
COUNTY OF DOUGLAS, COLORADO



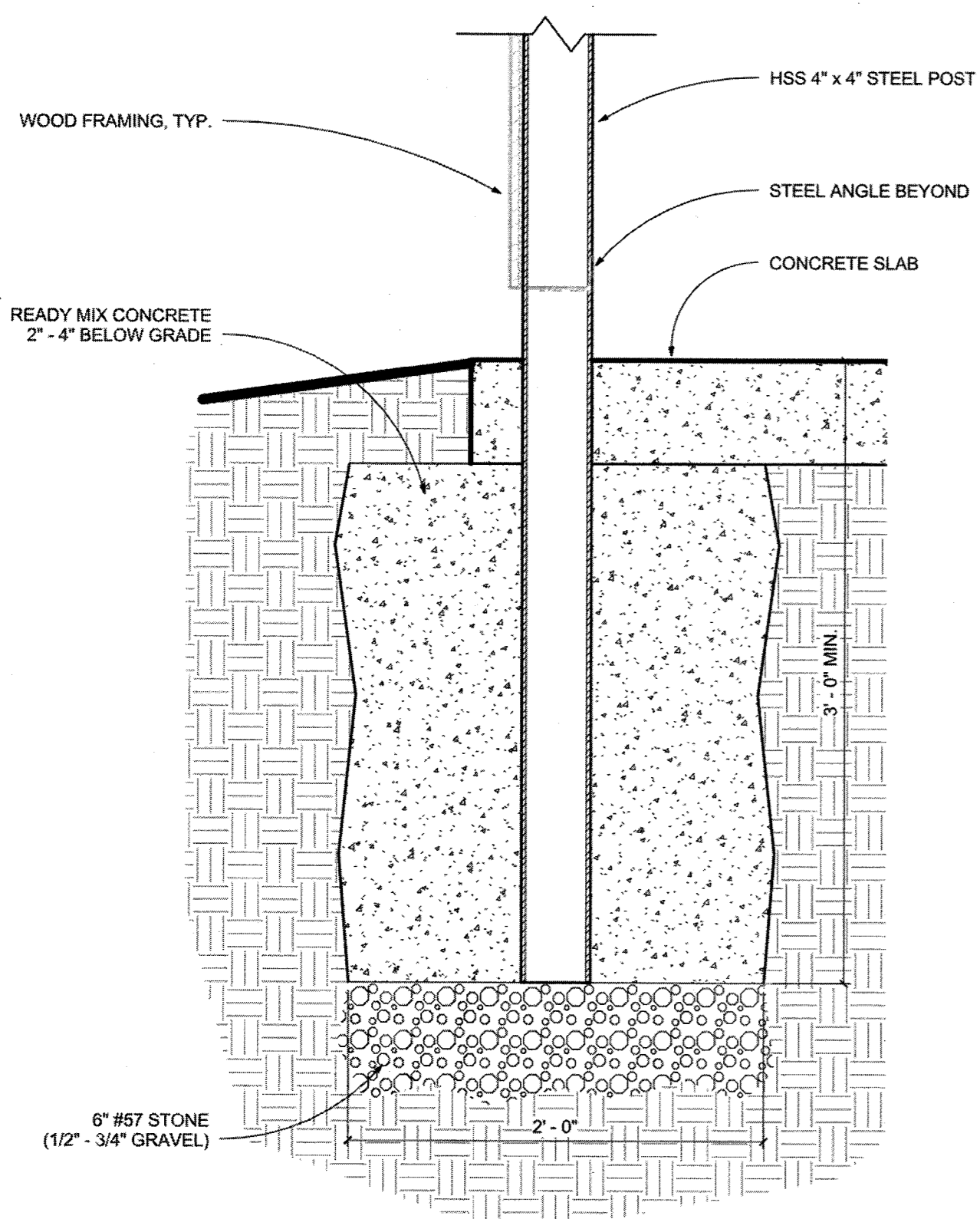
S1 TYPICAL WALL SECTION
1 1/2" = 1'-0"



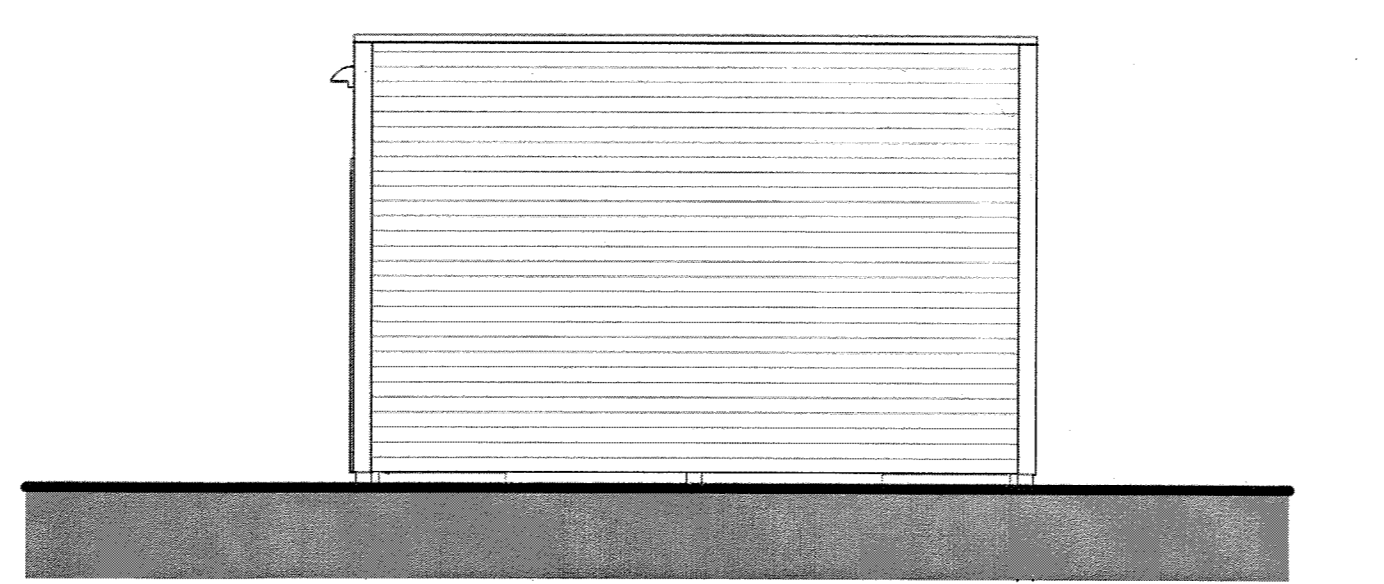
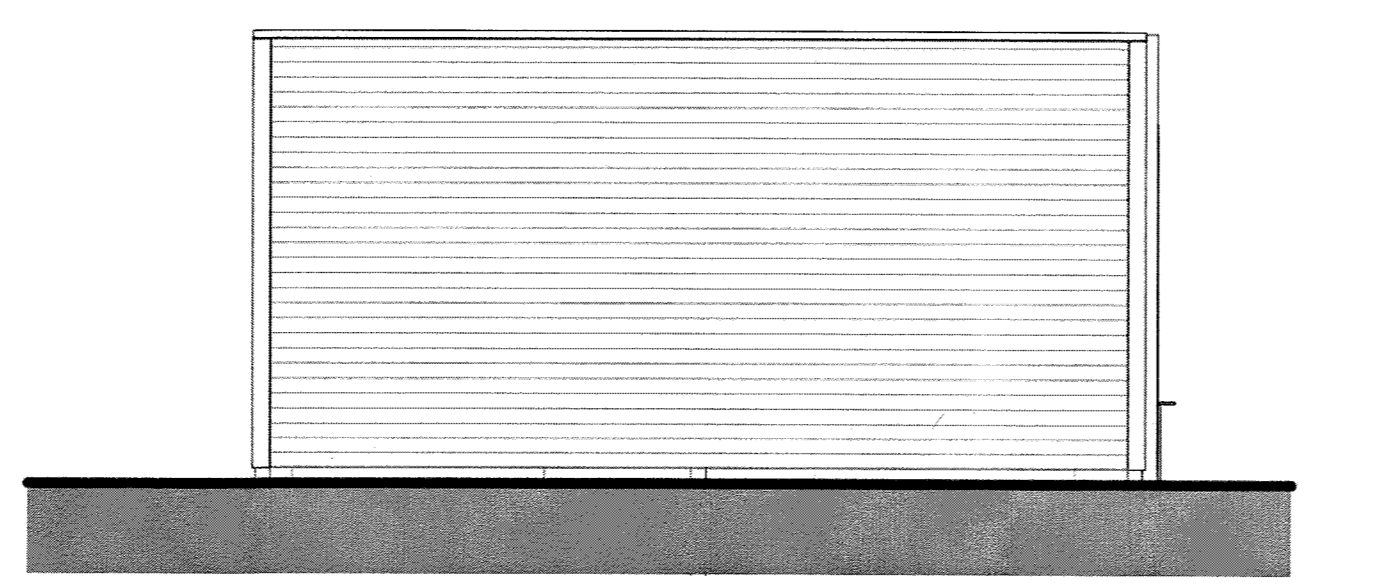
2 EAST
1/4" = 1'-0"



3 SOUTH
1/4" = 1'-0"



S2 TYPICAL COLUMN FOUNDATION DETAIL
1 1/2" = 1'-0"



LNC SERIES Cat.# Job: ROLLING HILLS Type: **HUBBELL Outdoor Lighting**

Approvals

SPECIFICATIONS

Intended Use: This compact LED LNC is designed for on-type/retailer illumination for safety, security and identity. Typical mounting height is up to 12 feet with 40ft fixture spacing (without acrylic diffuser) and 30ft spacing with acrylic diffuser installed. Photocell control option is available to provide dusk-to-dawn control for additional energy savings.

Construction: Decorative die-cast aluminum housing and door. Rugged design protects internal components and provides excellent thermal management for long life - 60,000 hours minimum LED life at L80 rating per IESNA TM-21-11. Powder paint finishes provide lasting appearance in outdoor environments.

Optics/Electrical: Drivers are 120-277V, 50/60Hz; Type II, III and Type IV lenses provide wide lateral spread. 0-10V dimming 120-277V only.

- LNC5L - 5 LEDs, Types II, III or IV available, see page 2 for electrical details.
- LNC7L - 7 LEDs, Type II, III or IV available, see page 2 for electrical details.
- LNC9L - 9 LEDs, Types II, III or IV available, see page 2 for electrical details.
- 3000K - 80 CRI, 4000K - 70 CRI, and 5000K - 70 CRI, CCT nominal
- Minimum operating temperature is -40°C/-40°F
- Drivers have greater than .90 power factor and less than 20% Total Harmonic Distortion

Lenses: Full cut-off distribution. Ambient diffuser included. Use for applications near entrances or locations where reduced brightness is desired.

Installation: Quick mount adapter provides quick installation, designed for recessed box 4" square junction box.

Listings: Listed and labeled to UL 1598 for wet locations, 25° ambient environments. Some models meet DesignLights Consortium (DLC) qualifications, consult DLC website for more details: <http://www.designlights.org/DLC>

• IES Progress Award Winner - 2012

Warranty: Five year limited warranty (for more information visit: <http://www.hubbelloutdoor.com/resources/warranty>)

PRODUCT IMAGE(S)

LNC-5L LNC-7L LNC-9L With diffuser

DIMENSIONS

A: 4.61" (122 mm) B: 1.55" (39 mm) C: 8.22" (209 mm) D: 5.25" (133 mm)

SHIPPING INFORMATION

Catalog Number	G.Wt./Ct. (Lbs.)	Length (Inch)	Width (Inch)	Height (Inch)	Carton Qty. per Master Pack
LNC-5L	8.6 (4.36)	14.5 (37)	8.6 (24.9)	6.8 (17.5)	2
LNC-7L	9.6 (4.36)	14.5 (37)	8.6 (24.9)	6.8 (17.5)	2
LNC-9L	9.6 (4.36)	14.5 (37)	8.6 (24.9)	6.8 (17.5)	2

CERTIFICATIONS/LISTINGS

SR lighting facts DLC TULSA ENERGY 3000K and warmer CCTs only

ORDERING INFORMATION

ORDERING EXAMPLE: LNC-9LU-5K-3-1-PC1

LNC - SL - 1 - 4K - 3 - 4 - PC(1)

SERIES	NUMBER OF LEDS	VOLTAGE	CCT	IES DISTRIBUTION	FINISH	OPTIONS
LNC	5L ¹ 5 LEDs	U 120V-277V	3K 3000K nominal, 70 CRI	2 Type II	1 Bronze	PC(1) Button photocell, replace X with voltage, specify 1-120V, 2-208V, 3-240V, 4-277V
LNC	7L ² 7 LEDs	1 120V	4K 4000K nominal, 70 CRI	3 ³ Type III	2 Black	
LNC	9L ³ 9 LEDs	2 208V	5K ⁴ 5000K nominal	4 ⁴ Type IV	3 Grey	
LNC		3 240V			4 White	
LNC		4 277V			5 Platinum	

AMP Amber (500 um available for "Turtle Friendly" observatory applications, 350 mA (consult factory))

1 When PC is ordered, input must match PC voltage
2 Amber LEDs only available on 7LU and 9LU configurations, 350 mA only
3 Design Lights Consortium (DLC) qualified 5/7/9 models: 5K only: LNC-9LU-5K-4, LNC-9LU-5K-3, LNC-7LU-5K-4, LNC-7LU-5K-3, LNC-5LU-5K

Hubbell Outdoor Lighting • 701 Millennium Boulevard • Greenville, SC 29607 • Phone: 864-678-1000
Due to our continued efforts to improve our products, product specifications are subject to change without notice.
© 2016 HUBBELL OUTDOOR LIGHTING, All Rights Reserved • For more information visit our website: www.hubbelloutdoor.com • Printed in USA

15'-0"

EQ EQ

20'-0"

EQ EQ

DUMP AREA

5/8" ANCHOR BOLT W/ NUT & WASHER TOP & BOTTOM, MIN 6" INTO EXISTING SLAB & EPOXY, TYP. EACH SIDE OF DOORWAYS

S1 A1.1

2 A1.1

LIGHT FIXTURE ABOVE, RE: ELEV.

4'-0"

3'-0"

ELEC PANEL, RE ELEC, TYP.

3 A1.1

1 MAIN LEVEL
1/4" = 1'-0"

ROLLING HILLS SITE DEVELOPMENT PLAN
PROJECT NO. SDP17-0005

AFFINITY ENGINEERING
1887 E. Bellevue Avenue,
Suite 1100
Englewood, Colorado 80111
Telephone: 303-228-2256
info@Affinity-Engineering.com

PROJECT:
TRASH ENCLOSURE
AT ROLLING HILLS
APARTMENTS

CLIENT:
ROLLING HILLS
APARTMENTS
1129 EATON CIRCLE
CASTLE ROCK, CO
80104

SHEET:

PLANS
ELEVATIONS
SECTIONS

ISSUED:	06/29/17
1	Revision 1 07/10/17
2	Revision 2 07/25/17

CONTACTS:

For design questions regarding these plans and specifications contact the Project Manager: SHELDON SMITH, PE
Telephone: 719-232-5055
Email: sheldon@affinity-engineering.com

For scheduling site observation and for field changes contact the Construction Administrator: SHELDON SMITH, PE
Telephone: 719-232-5055
Email: sheldon@affinity-engineering.com

JOB NO: 16-242
CAD NO: 16-242 ROLLING HILLS TRASH ENCLOSURE
DRAWN BY: KAP
ARCHITECT: KAP
SCALE: AS NOTED
SHEET NUMBER

3 OF 3
ELEVATIONS