

SITE DEVELOPMENT PLAN

LOT 1, BLOCK 6, PROMENADE AT CASTLE ROCK FILING NO. 1
 LOCATED IN THE N. 1/2 OF SEC. 27, T. 7 S., R. 67 W., OF THE 6TH P. M.,
 COUNTY OF DOUGLAS, STATE OF COLORADO

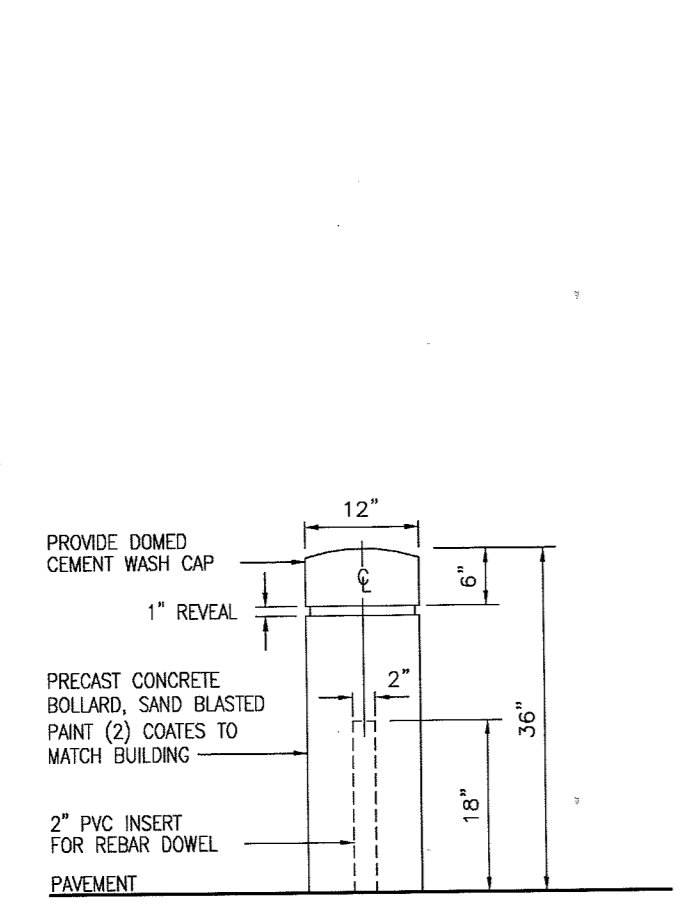
Galloway
 Planning, Architecture, Engineering
 6162 S. Willow Drive, Suite 320
 Greenwood Village, CO 80111
 303.770.8884
 www.gallowayUS.com
©2015 Galloway & Company, Inc. All Rights Reserved



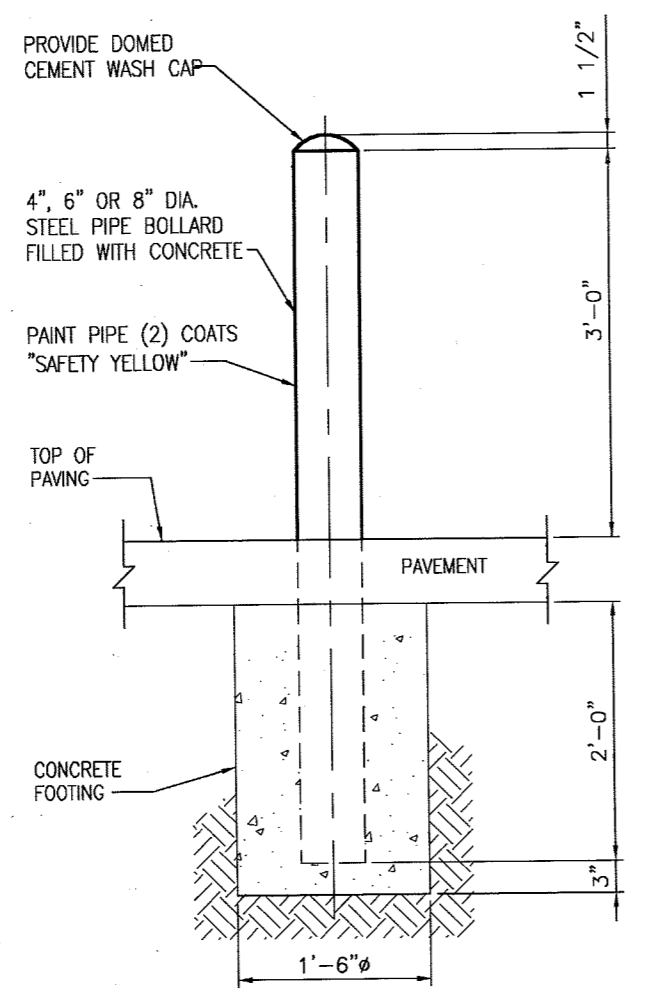
King Soopers
 Supermarket / Petroleum
 65 Tejon Street
 Denver, CO 80223
 Phone (303) 778-5653
 Fax (303) 811-9262

COPYRIGHT
 THESE PLANS ARE AN INSTRUMENT OF SERVICE AND ARE THE PROPERTY OF GALLOWAY, AND MAY NOT BE DUPLICATED, DISCLOSED, OR REPRODUCED WITHOUT THE WRITTEN CONSENT OF THE ARCHITECT. COPYRIGHTS AND INFRINGEMENTS WILL BE ENFORCED AND PROSECUTED.
 EXCEPTION: SITE DEVELOPMENT PLANS ARE PUBLIC RECORD AND THE TOWN OF CASTLE ROCK WILL DISTRIBUTE HARD OR ELECTRONIC COPIES UPON REQUEST OR AS DEEMED APPROPRIATE AT THE SOLE DISCRETION OF THE TOWN.

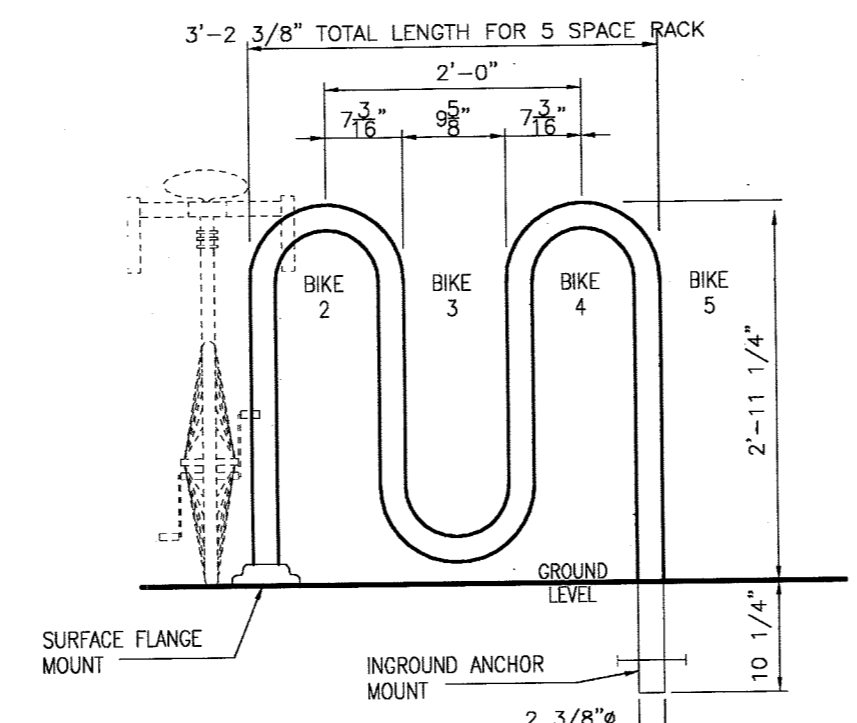
Unofficial Copy



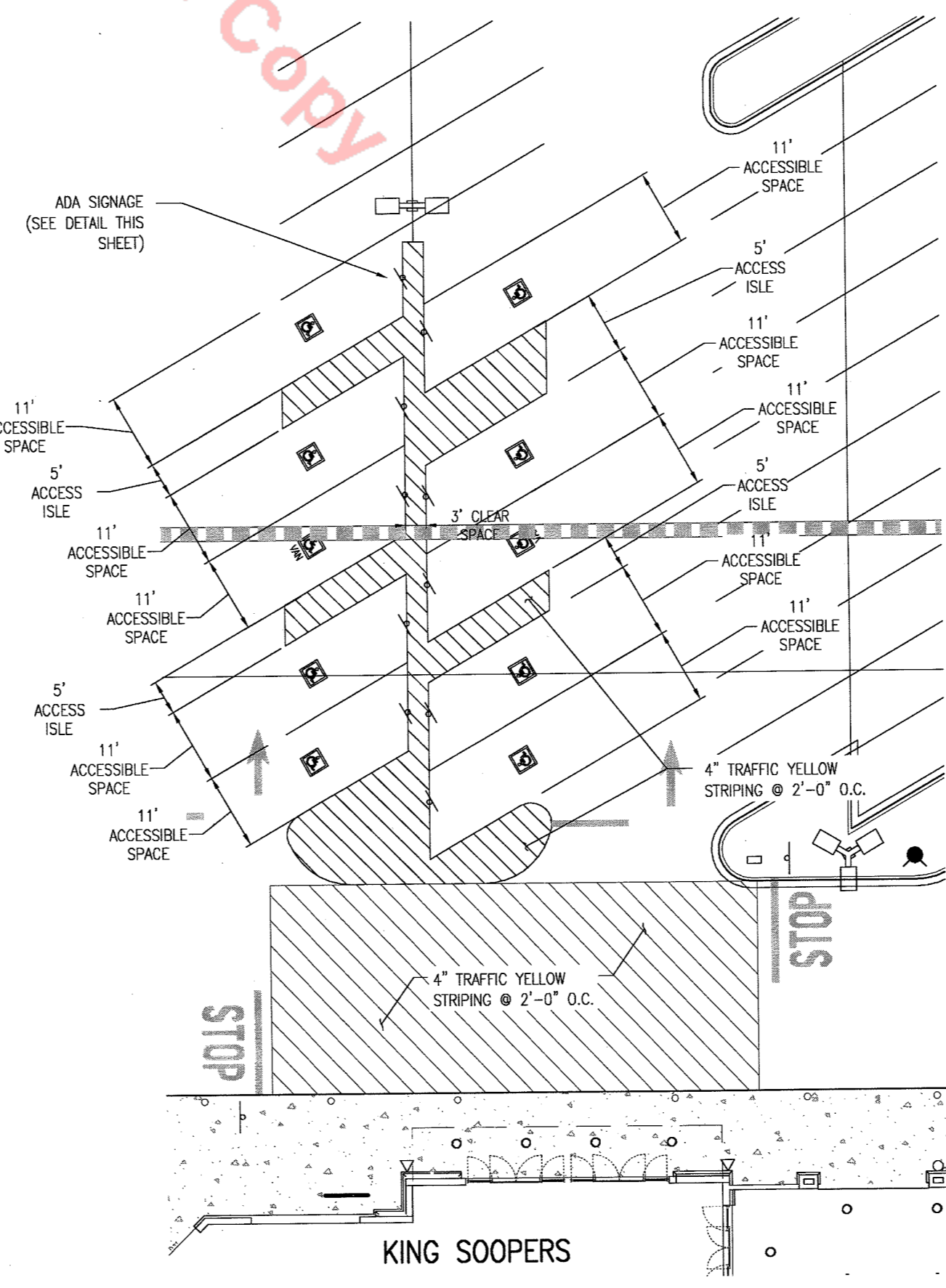
1 PRE-CAST CONCRETE BOLLARD AT FRONT SIDEWALK
 NOT TO SCALE



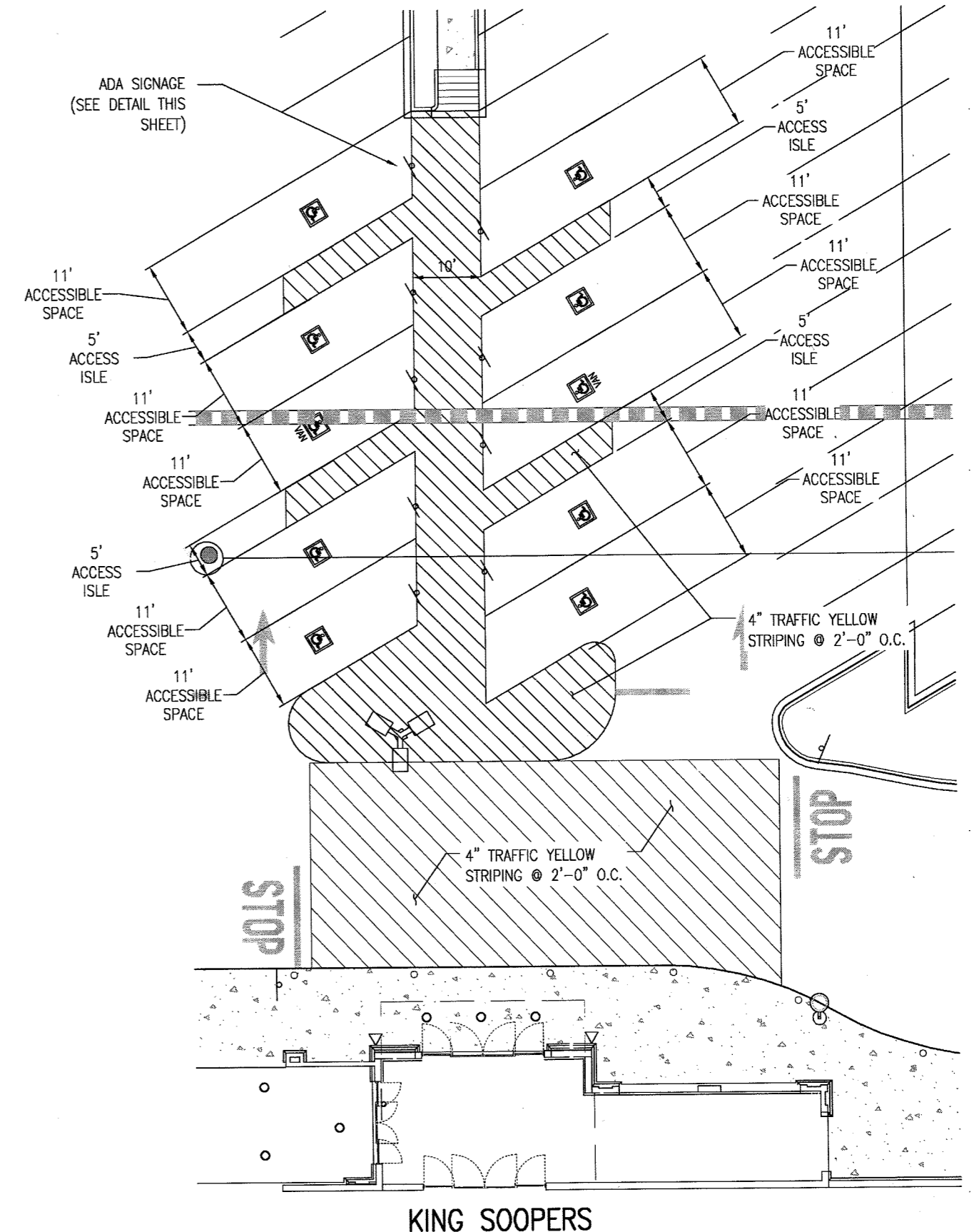
2 PIPE BOLLARD DETAIL (OTHER THAN AT FRONT SIDEWALK)
 NOT TO SCALE



3 BICYCLE RACK DETAIL
 SCALE: 3/4" = 1'-0" (BIKE RACK SHALL BE LONG ENOUGH FOR A MINIMUM OF 11 SPACES)



4 PROPOSED KING SOOPERS ENTRY CROSSWALK AND ADA PARKING DETAILS (NORTH)
 SCALE: 1"=20'
 NOTE: ANY ADA SPACE CAN BE VAN ACCESSIBLE DUE TO WIDER 11' STALLS AND STANDARD 5' ACCESS AISLES



5 PROPOSED KING SOOPERS ENTRY CROSSWALK AND ADA PARKING DETAILS (SOUTH)
 SCALE: 1"=20'

KING SOOPERS #125

PROMENADE AT CASTLE ROCK

KING SOOPERS
 65 TEJON STREET, DENVER, CO 80223

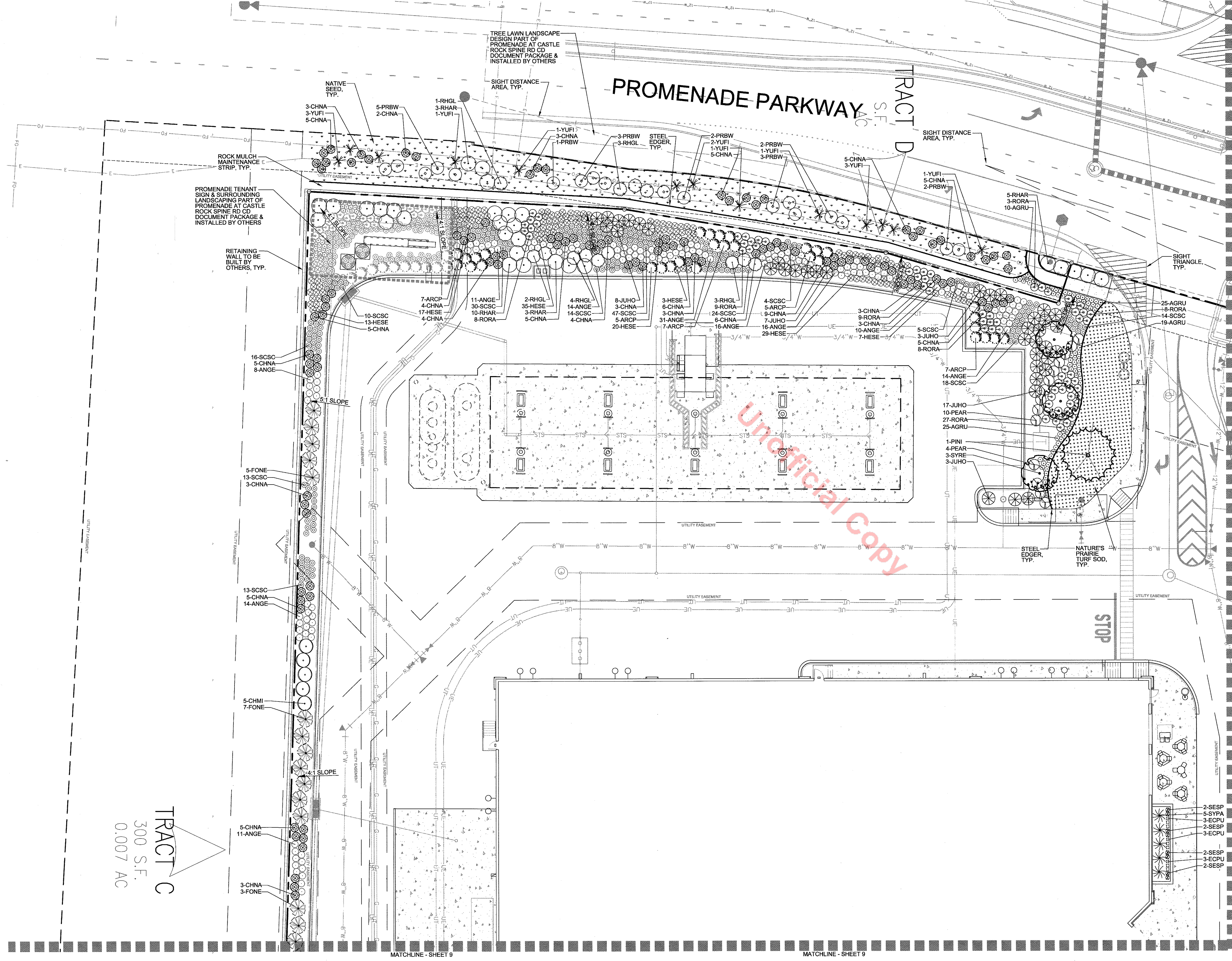
#	Date	Issue / Description	Int.

Project No: KSS000125
 Drawn By: RDG
 Checked By: BSM
 Date: MARCH 2015

SHEET TITLE:
 SITE DETAILS

SITE DEVELOPMENT PLAN

LOT 1, BLOCK 6, PROMENADE AT CASTLE ROCK FILING NO. 1
LOCATED IN THE N. 1/2 OF SEC. 27, T. 7 S., R. 67 W., OF THE 6TH P. M.,
COUNTY OF DOUGLAS, STATE OF COLORADO

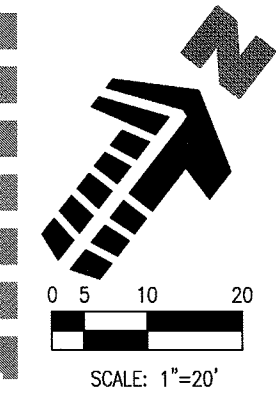


PLANTING LEGEND

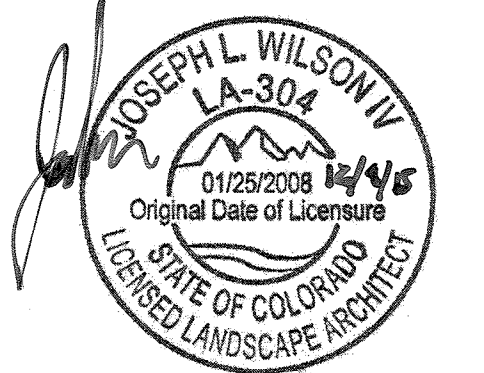
SYMBOL	LEGEND ABBREV.	BOTANIC NAME	COMMON NAME
OVERSTORY DECIDUOUS TREES			
(Symbol)	CEOC	CELTIS OCCIDENTALIS	WESTERN HACKBERRY
(Symbol)	GLTR	GLEDTISIA TRIACANTHOS INERMIS 'SHADEMASTER'	SHADEMASTER LOCUST
(Symbol)	GYDI	GYMNOCALADUS DIOICA ESPRESSO	ESPRESSO KENTUCKY COFFEE TREE
(Symbol)	PYCA	PYRUS CALLERYANA	CHANTICLEER PEAR
(Symbol)	QUBI	QUERCUS BICOLOR	SWAMP WHITE OAK
(Symbol)	QUMA	QUERCUS MACROCARPA	BUR OAK
ORNAMENTAL DECIDUOUS TREES			
(Symbol)	AMCA	AMELANCHIER CANADENSIS	SHADBLOW SERVICEBERRY
(Symbol)	CRCR	CRATAEGUS CRUS-GALLI VAR. INERMIS	COCKSPUR THORNLESS HAWTHORN
(Symbol)	QUGA	QUERCUS GAMBELII	GAMBEL OAK
(Symbol)	SYRE	SYRINGA RETICULATA	JAPANESE TREE LILAC
EVERGREEN TREES			
(Symbol)	PIED	PINUS EDULIS	PINYON PINE
(Symbol)	PINI	PINUS NIGRA	AUSTRIAN PINE
(Symbol)	PIPO	PINUS PONDEROSA	PONDEROSA PINE
(Symbol)	PISY	PINUS SYLVESTRIS	SCOTCH PINE
DECIDUOUS SHRUBS			
(Symbol)	CACL	CARYOPTERIS X CLANDONENSIS	BLUE MIST SPIREA
(Symbol)	CEIN	CEROCARPUS INTRICATUS	LITTLE LEAF MOUNTAIN MAHOGANY
(Symbol)	CHMI	CHAMAEBATIARA MILLEFOLIUM	FERNBUSH
(Symbol)	CHNA	CHRYSOTHAMNUS NAUSEOSUS	RUSSIAN SAGE
(Symbol)	FAPA	FALLUGIA PARADOXA	APACHE PLUME
(Symbol)	FONE	FORESTIERA NEOMEXICANA	NEW MEXICO PRIVET
(Symbol)	PEAR	PEROVSKIA ARTIPLICIFOLIA	RUSSIAN SAGE
(Symbol)	POFR	POTENTILLA FRUTICOSA	GOLDFINGER POTENTILLA
(Symbol)	PRBW	PRUNUS BESSEYI 'WESTERN'	WESTERN SAND CHERRY
(Symbol)	RHAR	RHUS AROMATICA 'GRO-LOW'	GRO-LOW SUMAC
(Symbol)	RHGL	RHUS GLABRA 'CISMONTANA'	ROCKY MOUNTAIN SUMAC
(Symbol)	RHTR	RHUS TRILOBATA	THREE LEAF SUMAC
(Symbol)	RORA	ROSA 'RADSUNNY'	SUNNY KNOCK OUT ROSE
(Symbol)	SYPA	SYRINGA PATULA 'MISS KIM'	MISS KIM LILAC
(Symbol)	YUFI	YUCCA FILAMENTOSA	ADAM'S NEEDLE
EVERGREEN SHRUBS			
(Symbol)	ARCP	ARCTOSTAPHYLOS X CALIFORNIENSIS 'PANCHITO'	PANCHITO MANZANITA
(Symbol)	ARUV	ARCTOSTAPHYLOS UVA-URSI	KINNICKINICK
(Symbol)	JUHO	JUNIPERUS HORIZONTALIS 'BLUE CHIP'	BLUE CHIP JUNIPER
(Symbol)	JUSA	JUNIPERUS SABINA 'BUFFALO'	BUFFALO JUNIPER
ORNAMENTAL GRASSES			
(Symbol)	ANGE	ANDROPOGON GERARDII	BIG BLUESTEM
(Symbol)	CAAC	CALAMAGROSTIS ACUTIFLORA	FEATHER REED GRASS
(Symbol)	HESE	HELICTOTRICHON SEMPERVIRENS	BLUE AVENA GRASS
(Symbol)	NATE	NASSELA TENUISSIMA	MEXICAN FEATHER GRASS
(Symbol)	PAVI	PANICUM VIRGATUM 'SHAMPOONY'	RED SWITCH GRASS
(Symbol)	SCSC	SCHIZACHYRIUM SCOPARIUM	LITTLE BLUESTEM
PERENNIALS			
(Symbol)	AGRU	AGASTACHE RUPESTRIS 'SUNSET'	SUNSET HYSSOP
(Symbol)	CETO	CERASTIUM TOMENTOSUM	SNOW-IN-SUMMER
(Symbol)	ECPU	ECHINACEA PURPUREA 'ALBA'	WHITE CONEFLOWER
(Symbol)	SESP	SEDUM SPECTABILE 'AUTUMN JOY'	AUTUMN JOY SEDUM
TURF, SEED, AND MULCH			
(Symbol)	SOD	NATURE'S PRAIRIE TURF, SEE SOD NOTES	TURF SOD
(Symbol)	MULCH	4" - 6" DIA. MULTI-COLOR COBBLE ROCK MULCH WITH DOUBLE SHREDDED BARK MULCH, SEE LANDSCAPE NOTES	ROCK MULCH
(Symbol)	SEED	IRRIGATED DRYLAND SEED / WILD FLOWER MIX, SEE SEED NOTES	GRASS SEED
(Symbol)	SEED	OUTLOT SEED MIX, SEE SEED NOTES	GRASS SEED

SITE AMENITIES LEGEND

- (Symbol) PICNIC TABLE - SEE SHEET 14/ DET. 1
- (Symbol) BENCH - SEE SHEET 14/ DET. 2



King Soopers
Supermarket / Petroleum
65 Tejon Street
Denver, CO 80223
Phone (303) 778-3053
Fax (303) 871-8262



COPYRIGHT
THESE PLANS ARE AN INSTRUMENT OF SERVICE AND ARE THE PROPERTY OF GALLOWAY, AND MAY NOT BE DUPLICATED, DISCLOSED, OR REPRODUCED WITHOUT THE WRITTEN CONSENT OF THE ARCHITECT. COPYRIGHTS AND INFRINGEMENTS WILL BE ENFORCED AND PROSECUTED.
EXCEPTION: SITE DEVELOPMENT PLANS ARE PUBLIC RECORDS AND THE TOWN OF CASTLE ROCK WILL DISTRIBUTE HARD OR ELECTRONIC COPIES UPON REQUEST OR AS DEEMED APPROPRIATE AT THE SOLE DISCRETION OF THE TOWN.

KING SOOPERS #125
 PROMENADE AT CASTLE ROCK
KING SOOPERS
 65 TEJON STREET, DENVER, CO 80223

#	Date	Issue / Description	Init.

Project No: KSS00125
 Drawn By: NLR
 Checked By: JLV
 Date: MARCH 2015

SHEET TITLE:
LANDSCAPE PLAN

TOWN OF CASTLE ROCK REGISTRATION INFORMATION:
 CERTIFIED LANDSCAPE ARCHITECT JOSEPH L. WILSON #15-1115
 TOWN OF CASTLE ROCK REGISTRATION NUMBER #15-1115
 LICENSED LANDSCAPE ARCHITECT STATE OF COLORADO LA-304

7 LANDSCAPE PLAN
 SCALE: 1" = 20'

SDP15-0027 - SITE DEVELOPMENT PLAN
 LOT 1, BLOCK 6, PROMENADE AT CASTLE ROCK FILING NO. 1

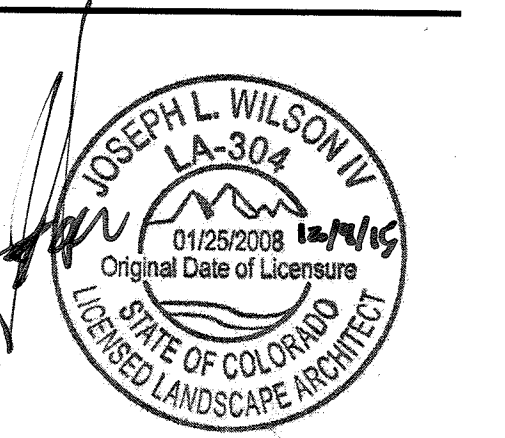
SITE DEVELOPMENT PLAN

LOT 1, BLOCK 6, PROMENADE AT CASTLE ROCK FILING NO. 1
LOCATED IN THE N. 1/2 OF SEC. 27, T. 7 S., R. 67 W., OF THE 6TH P. M.,
COUNTY OF DOUGLAS, STATE OF COLORADO

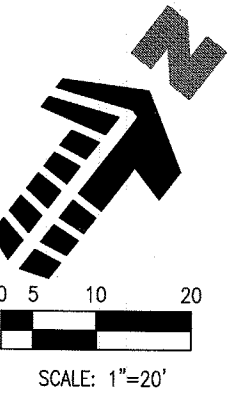
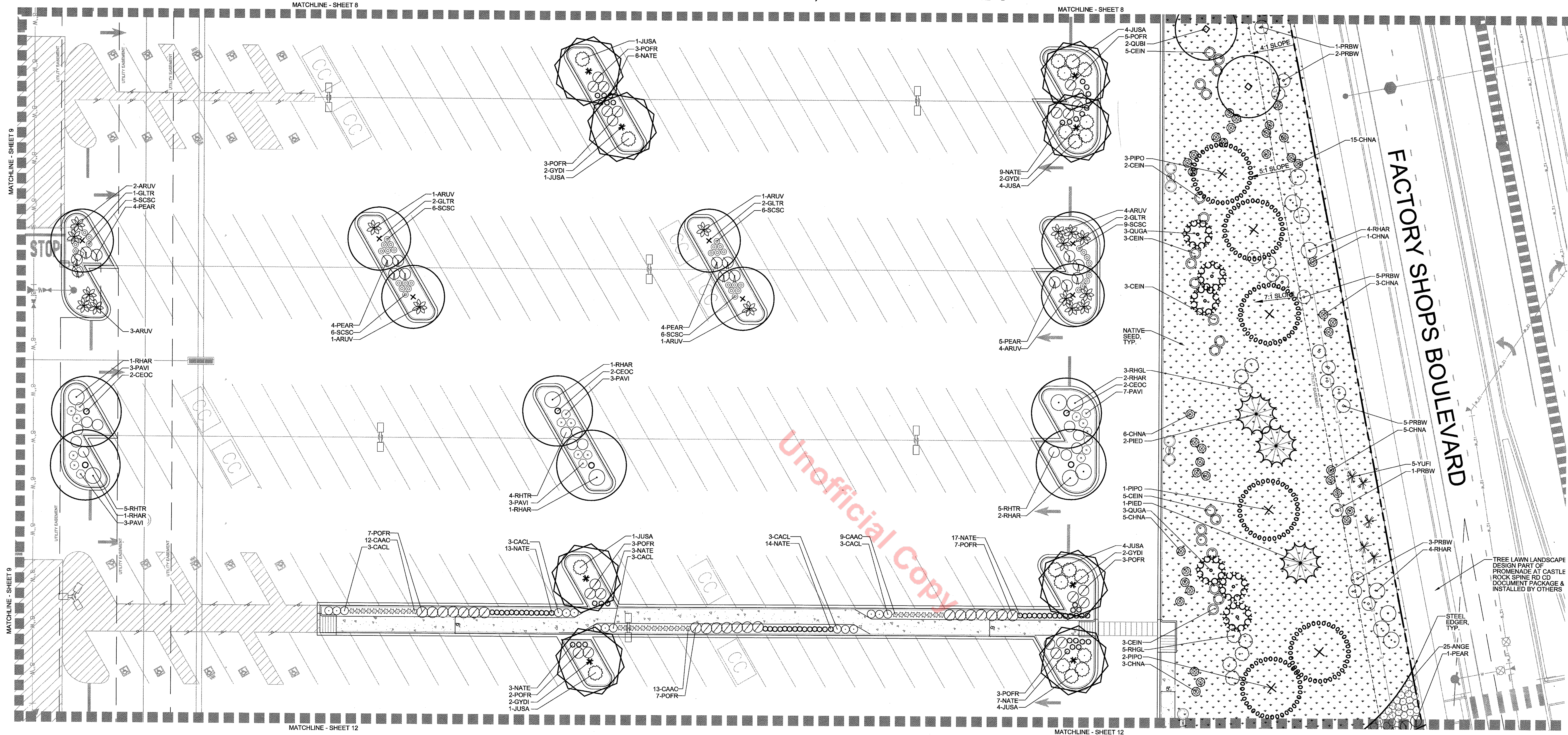
Galloway
Planning, Architecture, Engineering.
6162 S. Willow Drive, Suite 320
Greenwood Village, CO 80111
303.770.8864
www.gallowayus.com



King Soopers
Supermarket / Petroleum
65 Tejon Street
Denver, CO 80223
Phone (303) 778-3053
Fax (303) 871-8282



COPYRIGHT
THESE PLANS ARE AN INSTRUMENT OF SERVICE AND ARE THE PROPERTY OF GALLOWAY, AND MAY NOT BE DUPLICATED, DISCLOSED, OR REPRODUCED WITHOUT THE WRITTEN CONSENT OF THE ARCHITECT. COPYRIGHTS AND INFRINGEMENTS WILL BE ENFORCED AND PROSECUTED.
EXCEPTION: SITE DEVELOPMENT PLANS ARE PUBLIC RECORDS AND THE TOWN OF CASTLE ROCK WILL DISTRIBUTE HARD OR ELECTRONIC COPIES UPON REQUEST OR AS DEEMED APPROPRIATE AT THE SOLE DISCRETION OF THE TOWN.



PLANTING LEGEND

SYMBOL	LEGEND ABBREVIATION	BOTANIC NAME	COMMON NAME	SYMBOL	LEGEND ABBREVIATION	BOTANIC NAME	COMMON NAME	SYMBOL	LEGEND ABBREVIATION	BOTANIC NAME	COMMON NAME	SYMBOL	LEGEND ABBREVIATION	BOTANIC NAME	COMMON NAME
OVERSTORY DECIDUOUS TREES															
●	CEOC	CELTIS OCCIDENTALIS	WESTERN HACKBERRY	○	CACL	CARYOPTERIS X CLAUDONENSIS	BLUE MIST SPIREA	○	AGRU	AGASTACHE RUPESTRIS 'SUNSET'	SUNSET HYSSOP	■	SOD	NATURE'S PRAIRIE TURF, SEE SOD NOTES	TURF SOD
●	GLTR	GLEDTIS TRIACANTHOS INERMIS SHADEMASTER	SHADEMASTER LOCUST	○	CEIN	CERCOCARPUS INTRICATUS	LITTLELEAF MOUNTAIN MAHOGANY	○	CETO	CERASTIUM TOMENTOSUM	SNOW-IN-SUMMER	■	MULCH	4" - 6" DIA. MULTI-COLOR RIVER ROCK COBBLE MULCH WITH DOUBLE SHREDDED BARK MULCH, SEE LANDSCAPE NOTES	ROCK MULCH
●	GYDI	GYMNOCALADUS DIOICA 'ESPRESSO'	ESPRESSO KENTUCKY COFFEETREE	○	CHMI	CHAMAEBATIARA MILLEFOLIUM	FERNBUSH	○	ECPU	ECHINACEA PURPUREA 'ALBA'	WHITE CONEFLOWER	■	SEED	IRRIGATED DRYLAND SEED / WILDFLOWER MIX, SEE SEED NOTES	GRASS SEED
●	PYCA	PYRUS CALLERYANA	CHANTICLEER PEAR	○	CHNA	CHIRYSOTHAMNUS NAUSEOSUS	RABBITBRUSH	○	SESP	SEDUM SPECTABILE 'AUTUMN JOY'	AUTUMN JOY SEDUM	■	SEED	OUTLOT DRYLAND SEED MIX, SEE SEED NOTES	GRASS SEED
●	QUBI	QUERCUS BICOLOR	SWAMP WHITE OAK	○	FAPA	FALLUGIA PARADOXA	APACHE PLUME								
●	QUMA	QUERCUS MACROCARPA	BUR OAK	○	FONE	FORESTIERA NEOMEXICANA	NEW MEXICO PRIVET								
ORNAMENTAL DECIDUOUS TREES															
●	AMCA	AMELANCHIER CANADENSIS	SHADBLow SERVICEBERRY	○	PEAR	PEROVSKIA ARTIPICIFOLIA	RUSSIAN SAGE								
●	CRCR	CRATAEGUS CRUS-GALLI VAR. INERMIS	COCKSPUR THORNLESS HAWTHORN	○	POFR	POTENTILLA FRUTICOSA 'GOLD DROP'	GOLDFINGER POTENTILLA								
●	QUGA	QUERCUS GAMBELII	GAMBEL OAK	○	PRBW	PRUNUS BESSEYI 'WESTERN'	WESTERN SAND CHERRY								
●	SYRE	SYRINGA RETICULATA	JAPANESE TREE LILAC	○	RHAR	RHUS AROMATICA 'GRO-LOW'	GRO-LOW SUMAC								
EVERGREEN TREES															
●	PIED	PINUS EDULIS	PINYON PINE	○	RHGL	RHUS GLABRA 'CISMONTANA'	ROCKY MOUNTAIN SUMAC								
●	PINI	PINUS NIGRA	AUSTRIAN PINE	○	RHTR	RHUS TRILOBATA	THREE LEAF SUMAC								
●	PIPO	PINUS PONDEROSA	PONDEROSA PINE	○	RORA	ROSA 'RADSUNNY'	SUNNY KNOCK OUT ROSE								
●	PISY	PINUS SYLVESTRIS	SCOTCH PINE	○	SYPA	SYRINGA PATULA 'MISS KIM'	MISS KIM LILAC								
○				○	YUFI	YUCCA FILAMENTOSA	ADAM'S NEEDLE								
DECIDUOUS SHRUBS															
○	ARCP	ARCTOSTAPHYLOS X COLORADENSIS 'PANCHITO'	PANCHITO MANZANITA	○	ANGE	ANDROPOGON GERARDII	BIG BLUESTEM								
○	ARUV	ARCTOSTAPHYLOS LIVIA-URSI	KINKINICK	○	CAAC	CALAMAGROSTIS ACUTIFLORA 'KARL FOERSTER'	FEATHER REED GRASS								
○	JUHO	JUNIPERUS HORIZONTALIS 'BLUE CHIP'	BLUE CHIP JUNIPER	○	HESE	HELICTOTRICHON SEMPERVIRENS	BLUE AVENA GRASS								
○	JUSA	JUNIPERUS SABINA 'BUFFALO'	BUFFALO JUNIPER	○	NATE	NASSELA TENUISSIMA	MEXICAN FEATHER GRASS								
ORNAMENTAL GRASSES															
○	CAAC	CALAMAGROSTIS ACUTIFLORA 'KARL FOERSTER'	FEATHER REED GRASS	○	CAAC	CALAMAGROSTIS ACUTIFLORA 'KARL FOERSTER'	FEATHER REED GRASS								
○	HESE	HELICTOTRICHON SEMPERVIRENS	BLUE AVENA GRASS	○	NATE	NASSELA TENUISSIMA	MEXICAN FEATHER GRASS								
○	NATE	NASSELA TENUISSIMA	MEXICAN FEATHER GRASS	○	PANI	PANICUM VIRGATUM 'SHANADOAH'	RED SWITCH GRASS								
○	PANI	PANICUM VIRGATUM 'SHANADOAH'	RED SWITCH GRASS	○	SCSC	SCHIZACHYRIUM SCOPARIUM	LITTLE BLUESTEM								
○	SCSC	SCHIZACHYRIUM SCOPARIUM	LITTLE BLUESTEM												

SITE AMENITIES LEGEND

- ▲ PICNIC TABLE - SEE SHEET 14/ DET. 1
- ▲ BENCH - SEE SHEET 14/ DET. 2

KING SOOPERS #125
PROMENADE AT CASTLE ROCK
KING SOOPERS
65 TEJON STREET, DENVER, CO 80223



TOWN OF CASTLE ROCK REGISTRATION INFORMATION:
CERTIFIED LANDSCAPE ARCHITECT JOSEPH L. WILSON
TOWN OF CASTLE ROCK REGISTRATION NUMBER #15-1175
LICENSED LANDSCAPE ARCHITECT STATE OF COLORADO LA-304

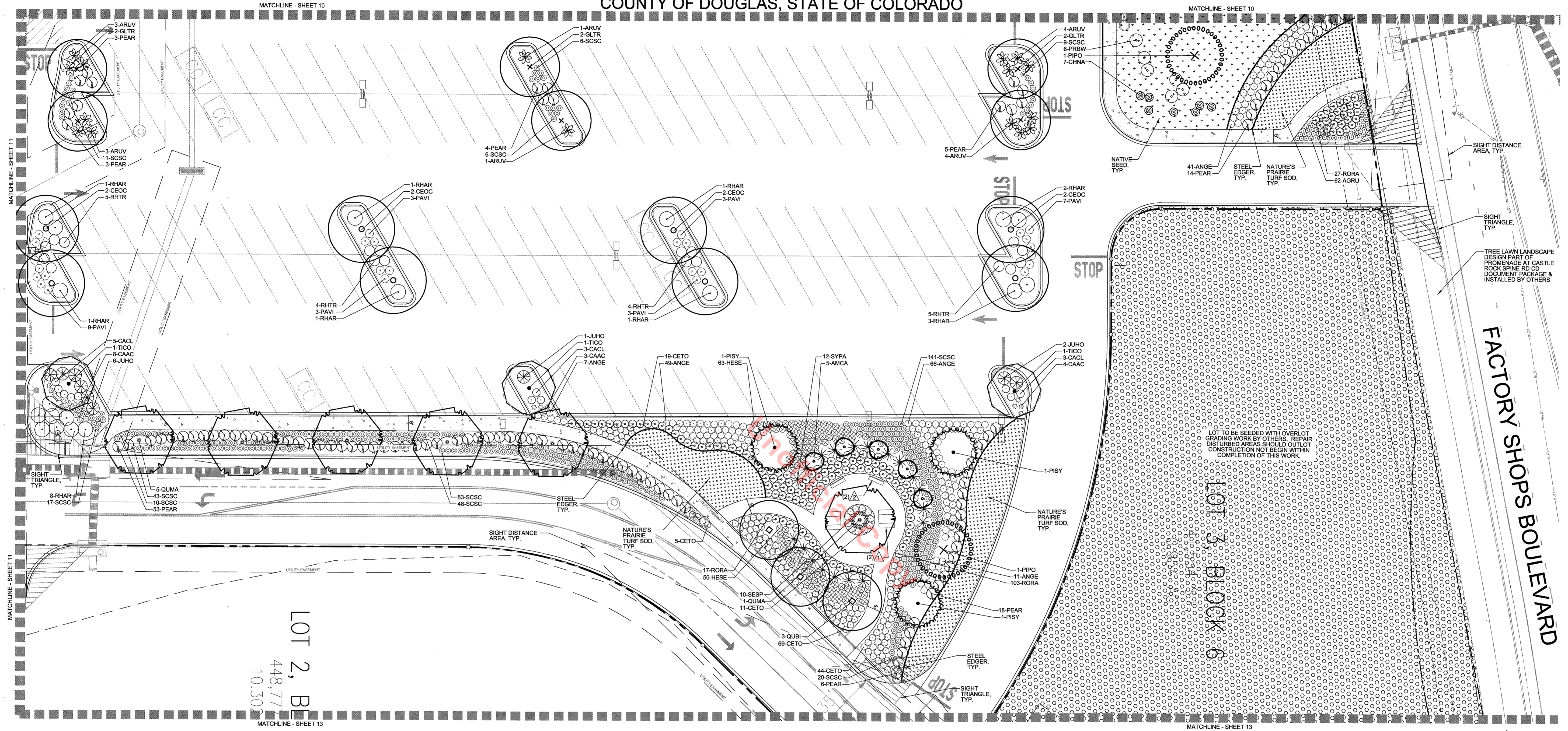
10 LANDSCAPE PLAN

SCALE: 1" = 20'

SDP15-0027 - SITE DEVELOPMENT PLAN
LOT 1, BLOCK 6, PROMENADE AT CASTLE ROCK FILING NO. 1

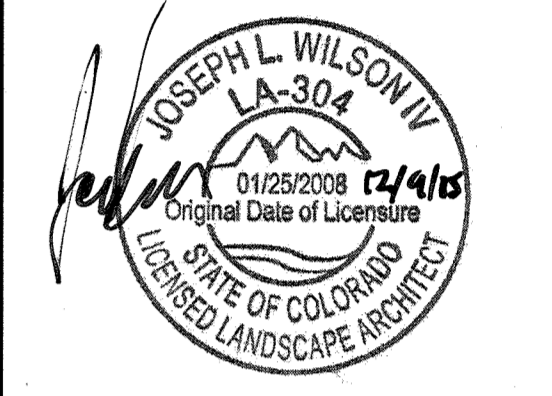
SITE DEVELOPMENT PLAN

LOT 1, BLOCK 6, PROMENADE AT CASTLE ROCK FILING NO. 1
 LOCATED IN THE N. 1/2 OF SEC. 27, T. 7 S., R. 67 W., OF THE 6TH P. M.,
 COUNTY OF DOUGLAS, STATE OF COLORADO



Galloway
 Planning, Architecture, Engineering,
 6162 S. Willow Drive, Suite 320
 Greenwood Village, CO 80111
 303.770.8864
 www.gallowayUS.com

KING Soopers
 King Soopers
 Supermarket / Petroleum
 65 Tejon Street
 Denver, CO 80223
 Phone (303) 778-3033
 Fax (303) 871-6262



COPYRIGHT
 THESE PLANS ARE AN INSTRUMENT OF SERVICE AND ARE THE PROPERTY OF GALLOWAY, AND MAY NOT BE DUPLICATED, DISCLOSED OR REPRODUCED WITHOUT THE WRITTEN CONSENT OF THE ARCHITECT. COPYRIGHTS AND INFRINGEMENTS WILL BE ENFORCED AND PROSECUTED. EXCEPTION: SITE DEVELOPMENT PLANS ARE PUBLIC RECORD AND THE TOWN OF CASTLE ROCK WILL DISTRIBUTE HARD OR ELECTRONIC COPIES UPON REQUEST OR AS DEEMED APPROPRIATE AT THE SOLE DISCRETION OF THE TOWN.

KING SOOPERS #125
 PROMENADE AT CASTLE ROCK
KING SOOPERS
 65 TEJON STREET, DENVER, CO 80223

PLANTING LEGEND

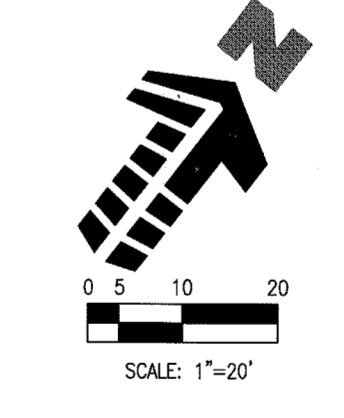
SYMBOL	LEGEND ABBREVIATION	BOTANIC NAME	COMMON NAME
OVERSTORY DECIDUOUS TREES			
○	CEOC	CELTIS OCCIDENTALIS	WESTERN HACKBERRY
○	GLTR	QLEDITSIA TRIACANTHOS INERMIS SHADEMASTER	SHADEMASTER LOCUST
○	GYDI	GYMNOCALADUS DIOICA 'ESPRESSO'	ESPRESSO KENTUCKY COFFEE TREE
○	PYCA	PYRUS CALLERYANA	CHANTICLEER PEAR
○	QUBI	QUERCUS BICOLOR	SWAMP WHITE OAK
○	QUJA	QUERCUS MACROCARPA	BUR OAK
ORNAMENTAL DECIDUOUS TREES			
○	AMCA	AMELANCHIER CANADENSIS	SHADBLow SERVICEBERRY
○	CRCR	CRATAEGUS CRUS-GALLI VAR. INERMIS	COCKSPUR THORNLESS HAWTHORN
○	QUGA	QUERCUS GAMBELII	GAMBEL OAK
○	SYRE	SYRINGA RETICULATA	JAPANESE TREE LILAC
EVERGREEN TREES			
○	PIED	PINUS EDULIS	PINYON PINE
○	PINI	PINUS NIGRA	AUSTRIAN PINE
○	PIPO	PINUS PONDEROSA	PONDEROSA PINE
○	PISY	PINUS SYLVESTRIS	SCOTCH PINE

SYMBOL	LEGEND ABBREVIATION	BOTANIC NAME	COMMON NAME
DECIDUOUS SHRUBS			
○	CACL	CARYOPTERIS X CLANDONENSIS	BLUE MIST SPIREA
○	CEIN	CERCOCARPUS INTRICATUS	LITTLELEAF MOUNTAIN MAHOGANY
○	CHMI	CHAMAEBATIARA MILLEFOLIUM	FERNBUSH
○	CHNA	CHRYSOETHAMNUS NAUSEOSUS	RABBITBRUSH
○	FAPA	FALLUGIA PARADOXA	APACHE PLUME
○	FONE	FORESTIERA NEOMEXICANA	NEW MEXICO PRIVET
○	PEAR	PEROVSKIA ARTIPLICIFOLIA	RUSSIAN SAGE
○	POFR	POTENTILLA FRUTICOSA 'GOLD DROP'	GOLDFINGER POTENTILLA
○	PRBW	PRUNUS BESSEYI 'WESTERN'	WESTERN SAND CHERRY
○	RHAR	RHUS AROMATICA 'GRO-LOW'	GRO-LOW SUMAC
○	RHGL	RHUS GLABRA 'CISMONTANA'	ROCKY MOUNTAIN SUMAC
○	RHTR	RHUS TRILOBATA	THREE LEAF SUMAC
○	RORA	ROSA 'RADSUNNY'	SUNNY KNOCK OUT ROSE
○	SYPA	SYRINGA PATULA 'MISS KIM'	MISS KIM LILAC
○	YUFI	YUCCA FILAMENTOSA	ADAM'S NEEDLE

SYMBOL	LEGEND ABBREVIATION	BOTANIC NAME	COMMON NAME
EVERGREEN SHRUBS			
○	ARCP	ARCTOSTAPHYLOS X COLORADENSIS 'PANCHITO'	PANCHITO MANZANITA
○	ARUV	ARCTOSTAPHYLOS UVA-URSI	KINNIKINNICK
○	JUHO	JUNIPERUS HORIZONTALIS 'BLUE CHIP'	BLUE CHIP JUNIPER
○	JUSA	JUNIPERUS SABINA 'BUFFALO'	BUFFALO JUNIPER
ORNAMENTAL GRASSES			
○	ANGE	ANDROPOGON GERARDII	BIG BLUESTEM
○	CAAC	CALAMAGROSTIS ACUTIFLORA 'KARL FORSTIERE'	FEATHER REED GRASS
○	HESE	HELIOTRICHON SEMPERVIRENS	BLUE AVENA GRASS
○	NATE	NASSELLA TENUISSIMA	MEXICAN FEATHER GRASS
○	PAVI	PANICUM VIRGATUM 'SHAMADDAH'	RED SWITCH GRASS
○	SCSC	SCHIZACHYRIUM SCOPARIUM	LITTLE BLUESTEM

SYMBOL	LEGEND ABBREVIATION	BOTANIC NAME	COMMON NAME
PERENNIALS			
○	AGRU	AGASTACHE RUPESTRIS 'SUNSET'	SUNSET HYSSOP
○	CETO	CERASTIUM TOMENTOSUM	SNOW-IN-SUMMER
○	ECPU	ECHINACEA PURPUREA 'ALBA'	WHITE CONEFLOWER
○	SESP	SEDUM SPECTABILE 'AUTUMN JOY'	AUTUMN JOY SEDUM

SYMBOL	LEGEND ABBREVIATION	BOTANIC NAME	COMMON NAME
TURF AND SEED			
○	SOD	NATURE'S PRAIRIE TURF, SEE SOD NOTES	TURF SOD
○	MULCH	4" - 6" DIA. MULTI-COLOR RIVER ROCK COBBLE MULCH WITH DOUBLE SHREDED BARK MULCH, SEE LANDSCAPE NOTES	ROCK MULCH
○	SEED	IRRIGATED DRYLAND SEED / WILDFLOWER MIX, SEE SEED NOTES	GRASS SEED
○	SEED	OUTLOT DRYLAND SEED MIX, SEE SEED NOTES	GRASS SEED



SITE AMENITIES LEGEND
 △ PICNIC TABLE - SEE SHEET 14/ DET. 1
 ▽ BENCH - SEE SHEET 14/ DET. 2



TOWN OF CASTLE ROCK REGISTRATION INFORMATION:
 CERTIFIED LANDSCAPE ARCHITECT: JOSEPH L. WILSON #15-1175
 TOWN OF CASTLE ROCK REGISTRATION NUMBER: LA-304
 LICENSED LANDSCAPE ARCHITECT STATE OF COLORADO

12 LANDSCAPE PLAN
 SCALE: 1" = 20'

SDP15-0027 - SITE DEVELOPMENT PLAN
 LOT 1, BLOCK 6, PROMENADE AT CASTLE ROCK FILING NO. 1

Project No: KSS000125
 Drawn By: NLR
 Checked By: JLV
 Date: MARCH 2015

SHEET TITLE:
 LANDSCAPE PLAN

SITE DEVELOPMENT PLAN

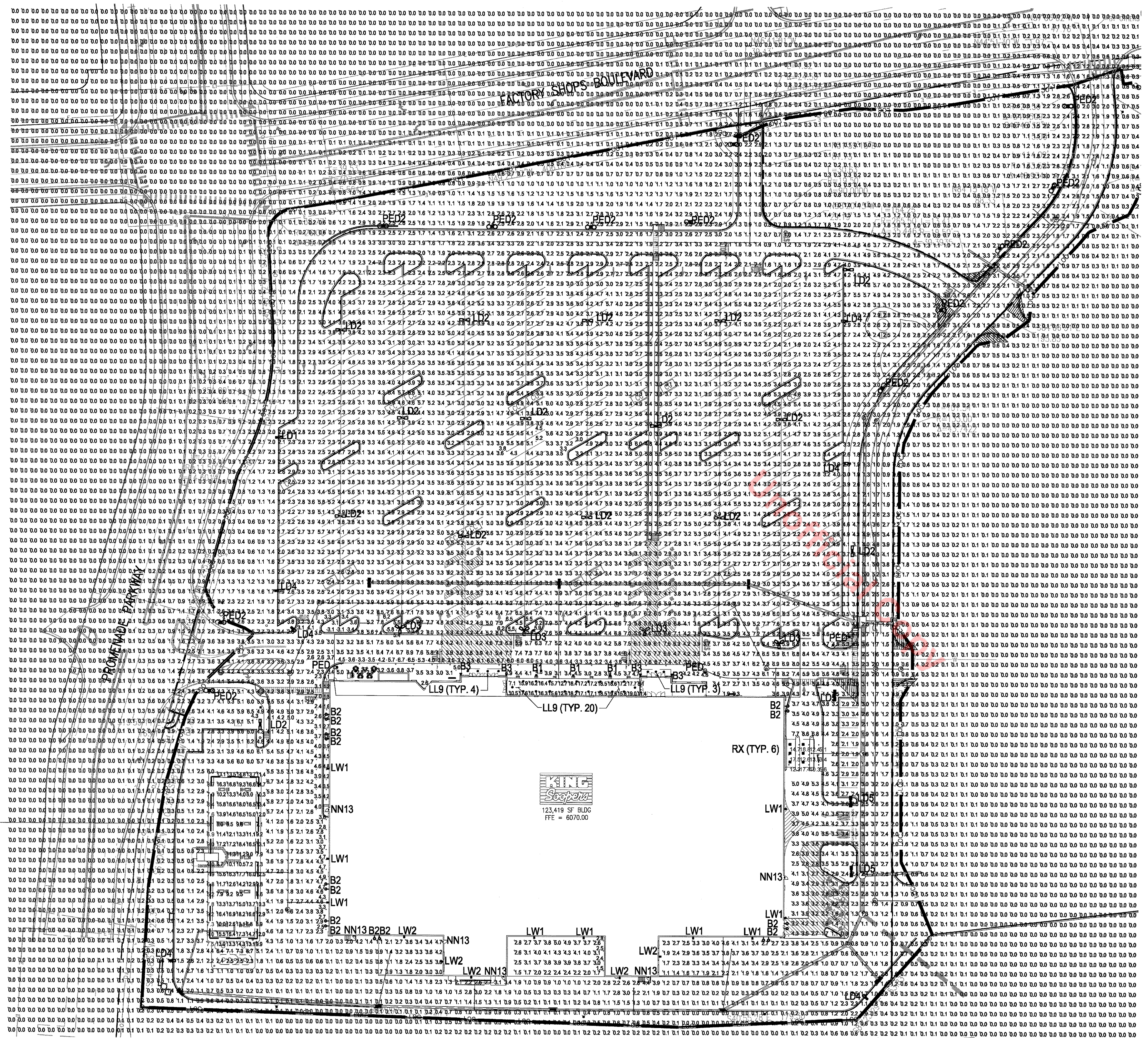
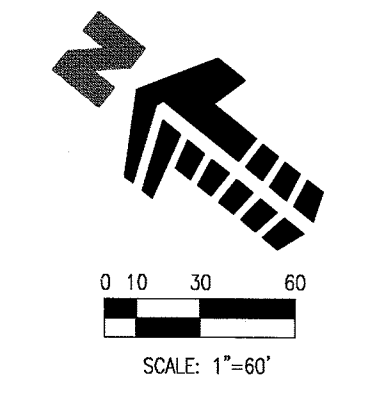
LOT 1, BLOCK 6, PROMENADE AT CASTLE ROCK FILING NO. 1
LOCATED IN THE N. 1/2 OF SEC. 27, T. 7 S., R. 67 W., OF THE 6TH P. M.,
COUNTY OF DOUGLAS, STATE OF COLORADO

Galloway
Planning, Architecture, Engineering,
6162 S. Willow Drive, Suite 320
Greenwood Village, CO 80111
303.770.8884
www.gallowayus.com



King Soopers
Supermarket / Petroleum

65 Tejon Street
Denver, CO 80223
Phone (303) 778-3083
Fax (303) 871-9632



GENERAL LIGHTING PLAN NOTES:

1. LIGHT TRESPASS TO ADJACENT PROPERTIES MITIGATED BY ORIENTATING ALL FIXTURES INTO SITE AND USING A LIGHT DISTRIBUTION ON OUTER LIGHT FIXTURES.
2. ALL LIGHTS, EXCEPT THOSE REQUIRED FOR SECURITY PURPOSES, TO BE EXTINGUISHED ONE (1) HOUR AFTER CLOSING. HOURS OF OPERATIONS WILL BE PROVIDED WITH CONSTRUCTION DOCUMENTS.
3. THE FOLLOWING TYPES OF LIGHTS ARE PROHIBITED:
FORWARD THROW (TYPE IV) DISTRIBUTION, POLE-MOUNTED LIGHTS AIMED AT A BUILDING FACADE, AND UNSHIELDED WALL PACKS.

COPYRIGHT
THESE PLANS ARE AN INSTRUMENT OF SERVICE AND ARE THE PROPERTY OF GALLOWAY. AND MAY NOT BE DUPLICATED, DISCLOSED, OR REPRODUCED WITHOUT THE WRITTEN CONSENT OF THE ARCHITECT. COPYRIGHTS AND INFRINGEMENTS WILL BE ENFORCED AND PROSECUTED. EXCEPTION: SITE DEVELOPMENT PLANS ARE PUBLIC RECORD AND THE TOWN OF CASTLE ROCK WILL DISTRIBUTE HARD OR ELECTRONIC COPIES UPON REQUEST IF AS DEEMED APPROPRIATE AT THE SOLE DISCRETION OF THE TOWN.

KING SOOPERS #125
PROMENADE AT CASTLE ROCK
KING SOOPERS
65 TEJON STREET, DENVER, CO 80223

CALCULATION SUMMARY						
LABEL	UNITS	AVG	MAX	MIN	AVG/MIN	MAX/MIN
MAIN PARKING	FC	3.70	8.2	1.8	2.08	4.56
FRONT DRIVE AISLE	FC	5.12	8.7	3.0	1.71	2.90
PHARMACY PARKING	FC	2.57	3.4	1.9	2.35	1.79
PHARMACY CANOPY	FC	11.97	18.8	3.4	3.52	5.53
RETAIL CANOPY	FC	15.97	19.5	7.1	2.22	2.75
MAIN ENTRY	FC	2.64	8.5	1.0	2.67	8.50
WEST ENTRY	FC	3.68	6.0	1.7	2.11	3.53
FUELING CANOPY	FC	12.03	19.3	4.0	3.01	4.83
FUEL PARKING	FC	4.15	6.2	2.4	1.73	2.58

LUMINAIRE SCHEDULE							
SYMBOL	QTY	LABEL	ARRANGE	MOUNTING	HEIGHT	DESCRIPTION	LUMENS PER HEAD
☐	1	L1	144	POLE	39'-6"	(1) AME-2-L-T5W-144LC-5-SK-UNV-BOA10-BK	23691
☐	15	L2	36x120"	POLE	39'-6"	(2) AME-2-L-T5W-144LC-5-SK-UNV-BOA10-BK	23691
☐	4	L3	36x120"	POLE	39'-6"	(3) AME-2-L-T5W-144LC-5-SK-UNV-BOA10-BK	23691
☐	6	L4	SINGLE	POLE	39'-6"	(1) AME-2-L-T3-72LC-5-SK-UNV-BOA10-BK	10508
☐	3	LD3	D180°	POLE	39'-6"	(1) AME-2-L-T5W-72LC-5-SK-UNV-BOA10-BK	10508
☐	3	LD5	SINGLE	POLE	16'-0"	(1) ODN-2-L-T3-42L-5-SK-UNV-BKVA112-S1-4-BK	3696
☐	12	PD2	D180°	POLE	28'-0"	(2) ODN-3-L-T5-84L-5-SK-UNV-BKVA112-D2-4-BK	9604
☐	9	LW1	SINGLE	WALL	20'-0"	(1) GLEON-AA-02-LED-E1-T3-WM	10501
☐	9	LW2	SINGLE	WALL	15'-0"/20'-0"	(1) GLEON-AE-01-LED-E1-T3-WM	5405
☐	7	NN13	SINGLE	WALL	10'-0"	(1) XTOR2A	1432
☐	27	LL9	D180°	RECESSED	12'-0"	(1) LD6A200010TE ERWAB30840 6LWLI	2202
☐	6	RX	D180°	CANOPY	12'-0"	(1) XSL2-5A-LED-50-SS-CW	2100
☐	18	A	SINGLE	CANOPY	15'-0"	(1) CRUS-SC-LED-VLV-CWJUE-WHT	1568
☐	3	B1	SINGLE	WALL	10'-0"	(1) WXB26126D3-BL	1710
☐	16	B2	SINGLE	GOOSENECK	15'-0"	(1) AD150-10-CW-LED-L	905
☐	4	B3	SINGLE	WALL	10'-0"	(1) P5882-87	1710

Project No: KSS00125
Drawn By: RDG
Checked By: BSM
Date: MARCH 2015

SHEET TITLE:
GENERAL LIGHTING PLAN

SITE DEVELOPMENT PLAN

LOT 1, BLOCK 6, PROMENADE AT CASTLE ROCK FILING NO. 1
 LOCATED IN THE N. 1/2 OF SEC. 27, T. 7 S., R. 67 W., OF THE 6TH P. M.,
 COUNTY OF DOUGLAS, STATE OF COLORADO

Galloway
 Planning, Architecture, Engineering
 6162 S. Willow Drive, Suite 311
 Greenwood Village, CO 80122
 303.770.8884
 www.gallowayusa.com
© 2015 Galloway & Company, Inc. All Rights Reserved.



King Soopers
 Supermarket / Petroleum
 65 Tejon Street
 Denver, CO 80223
 Phone: (303) 778-3053
 Fax: (303) 871-8282

COPYRIGHT
 THESE PLANS ARE AN INSTRUMENT OF SERVICE AND ARE THE PROPERTY OF GALLOWAY, AND MAY NOT BE DUPLICATED, DISCLOSED, OR REPRODUCED WITHOUT THE WRITTEN CONSENT OF THE ARCHITECT. COPYRIGHTS AND INFRINGEMENTS WILL BE PROSECUTED.
 EXCEPTION: SITE DEVELOPMENT PLANS ARE PUBLIC RECORDS AND THE TOWN OF CASTLE ROCK WILL DISTRIBUTE HARD OR ELECTRONIC COPIES UPON REQUEST OR AS DEMED APPROPRIATE AT THE SOLE DISCRETION OF THE TOWN.

KING SOOPERS #125
 PROMENADE AT CASTLE ROCK
KING SOOPERS
 65 TEJON STREET, DENVER, CO 80223

#	Date	Issue / Description	Int.

Project No: KSS00125
 Drawn By: RDM
 Checked By: BSM
 Date: MARCH 2015

SHEET TITLE: GENERAL LIGHTING PLAN DETAILS

Oden LED

Project Name: _____ Catalog Number: _____ Type: _____

Dimensional Drawings

Fixture	A	B	Max. LEDs	Lbs.
ODN-2-L	19"	22"	84	53
ODN-3-L	23"	24"	84	74

With six interchangeable caps and spun shade styles, the Oden LED offers architects, designers and engineers endless possibilities for a custom fixture to fit their unique application.

The Oden LED's high-quality, durable construction makes it an ideal fixture for any application.

Model	Optics	Source	Current	Relat.	Voltage	Mounting	Finish	Options
ODN-2-L	Type I (T1)	350 (3)	400K	120-277	400V	Yoke Mount (YM)	Black (BK)	Photo Recptacle (PC212) (PC238) (PC244) (PC277)
PED1	Type II (T2)	84 (84LC)	550K (S5K)	480 (8)	500K (S5K)	Arm Mount (AM)	White (WH)	Fusing (F128) (SF277) (DF298) (DF240)
ODN-3-L	Type III (T3)	84 (84LC)	550K (S5K)	347 (8)	500K (S5K)	Wall Mount (WM)	White (WH)	Cutoff (CO)
PED2	Type IV (T4)	84 (84LC)	550K (S5K)	347 (8)	500K (S5K)	Wall Mount (WM)	White (WH)	Cutoff (CO)
	Type V (T5)							
	Type VI (T6)							
	Type VII (T7)							

VISIONAIRE LIGHTING

Oden LED

Project Name: _____ Catalog Number: _____ Type: _____

Housing

- High-quality, one-piece spun aluminum shade and durable cast aluminum top cap, available in two housing sizes.
- All external hardware is stainless steel.
- One-piece, cast-aluminum door assembly with tool-less access.

Thermal Management

- The Oden LED provides excellent overall thermal management by maximizing the efficiency of the heat sink in the fixture. This enables the Oden LED to withstand higher ambient temperatures and higher drive currents without degrading LED life.

Optical System

- The highest lumen output Everc LEDs are utilized. Estimated life of the LEDs is 100,000+ hours. Available with 6 IES distribution patterns. Available with up to 84 LEDs. The optical system qualifies as IES full cutoff and is Dark-Sky certified to restrict light trespass, glare and light pollution for neighborhood-friendly lighting.
- CRI values are 70 for 4000K and 75 for 5500K.

Quali-Guard® Finish

- Fixture components are chemically pretreated through a multiple-stage washer and finished with an electrostatically-applied, thermoplastic polyester powder coat textured paint with a 3 to 5 mils thickness. Finish is oven-baked at 400°F for maximum adhesion and finish hardness.
- Available in standard and custom colors.

Electrical Assembly

- The Oden LED is supplied with a high-performance LED driver, located in its cap, that accepts 120 V thru 480 V, 50 Hz to 60 Hz input. Power factor is 95%. Rated for -40°F operation.
- High-voltage system offers motion control or factory preset switching options. Consult factory for specific details.
- 5 kV surge protector supplied as standard.

Warranty

- Five (5) year Limited Warranty on entire system, including finish. For full warranty information, please visit VisionaireLighting.com.

Solar Panel Option

- The Oden is compatible for use with Visionaire Lighting's Solar Panel Pole™.

Options

- Button type photocell
- Fusing
- Dual circuit
- 10KV Surge Protector
- Cutoff lower system
- High-voltage system
- 0-10 V dimming driver

Listings

- Oden is UL listed, suitable for wet locations.
- Dark-Sky Friendly® certified by the International Dark-Sky Association.
- RoHS compliant.
- IP65.
- LM79.
- LM80.
- Powder Coated Tough™ finish.

Mounting

- The Oden LED mounts to a wide selection of decorative and custom mounting arms for both pole and wall mount applications (see Mounting Arms section of catalog).

Typical Decorative Arms - (Additional Arms in Mounting Arm Section)

EPA Data

Fixture	Fixture Only	2 Fixtures with VA110-S1	2 Fixtures with VA110-D2	2 Fixtures with VA107-S1	2 Fixtures with VA107-D2
ODN-2-L	1.2	2.2	4.1	3.5	5.6
ODN-3-L	2.6	3.6	6.6	4.9	8.3

LED Data Chart for 5500K

# Bars	# LEDs	Output mA	Type 1	Type 2	Type 3	Type 4	Type 5	Type 5-W	System Watts	L70 Hours
1	42	350	3,840	3,941	3,754	3,811	3,988	4,140	46	150,000
		550	4,647	5,132	4,925	4,855	5,410	5,644	68	100,000
		350	7,507	7,863	6,663	7,320	7,076	8,260	92	150,000
2	84	530	9,155	10,263	9,998	9,710	10,820	11,295	136	100,000

VISIONAIRE LIGHTING

VA112 MOUNTING ARM

Project Name: _____ Catalog Number: _____ Type: _____

VA112 is available for both post top and suspended luminaires.

VA112 displays dual horizontal rods, constructed from 1 1/2" O.D. anodized aluminum tubing. The center slip flange can be made to slip over the following lumen (per pole) sizes: 2 1/2", 3", 3 1/2", 4", 4 1/2" and 4 3/4". VA112 is available in the following pole mounting configurations: Single and Double 180°. Please consult factory for custom mounting. Center section of arm will match pole design (i.e. fluted pole = fluted center arm section).

Fixture	A	B	C	D	E	F	EPA S1	EPA D2	EPA WM
VA112 S1	19"	12"	19 1/2"	6"	9"	1.2	1.7	1.1	
VA112 D2									

Specifications

Model	Shaft Size	Gauge	Height	Base	Anchorage	Mounting	Finish	Options
VA112	1 1/2"	11 (11)	10"	9" Base (9BC)	1/2" x 3/8" (3A3)	Ball-On-Arm Single (S1)	Black (BK)	GFI Receptacle (GFR)
			12"	12" Base (12BC)	1" x 3/8" (13A)		White (WH)	Custom Bolt Circle (CBC)
			14"	12" Base (12BC)	1" x 3/8" (13A)		Green (GN)	
			16"	12" Base (12BC)	1" x 3/8" (13A)		Forest Green (FG)	
			20"	12" Base (12BC)	1" x 3/8" (13A)		Grey (GY)	
			22"	12" Base (12BC)	1" x 3/8" (13A)		Silver Metallic (SL)	
			25"	12" Base (12BC)	1" x 3/8" (13A)		Custom Color (CC)	
			30"	12" Base (12BC)	1" x 3/8" (13A)			

DCB-10 POLE BASE

Model: DCB-10
 Shaft Diameter: 4" O.D. Smooth (SBS)
 Finish: Bronze (BZ), White (WH), Forest Green (FG), Grey (GY), Silver Metallic (SL), Custom Color (CC)

Base

- Two-piece chamfered style decorative fluted cast aluminum.

Finish

- All poles are shot-blasted and cleaned to a near-white finish prior to painting. A Quali-Guard® textured thermoplastic polyester powder coat is then applied to a minimum of 3 millimeters and then oven-baked at a temperature of 400°F to promote exceptional adhesion and finish hardness. Pole finish is warranted for a full two (2) years. An optional five (5) year extended warranty is also available (primo coat and rust inhibiting internal coating).

Anchor Bolts

- Poles are provided with hot-dip galvanized anchor bolts, with a "J" bend on one end and two flat bar ends and two flat washers per bolt. Anchor bolts meet or exceed a minimum of 36,000 PSI. Anchor bolts conform to ASTM F1554 grade 36 and are provided.

VISIONAIRE LIGHTING

RNTS

Project Name: _____ Catalog Number: _____ Type: _____

Specifications

Model	Shaft Size	Gauge	Height	Base	Anchorage	Mounting	Finish	Options
RNTS	4" (4)	11 (11)	10"	9" Base (9BC)	1/2" x 3/8" (3A3)	Ball-On-Arm Single (S1)	Black (BK)	GFI Receptacle (GFR)
			12"	12" Base (12BC)	1" x 3/8" (13A)		White (WH)	Custom Bolt Circle (CBC)
			14"	12" Base (12BC)	1" x 3/8" (13A)		Green (GN)	
			16"	12" Base (12BC)	1" x 3/8" (13A)		Forest Green (FG)	
			20"	12" Base (12BC)	1" x 3/8" (13A)		Grey (GY)	
			22"	12" Base (12BC)	1" x 3/8" (13A)		Silver Metallic (SL)	
			25"	12" Base (12BC)	1" x 3/8" (13A)		Custom Color (CC)	
			30"	12" Base (12BC)	1" x 3/8" (13A)			

Base

- Steel Plate base is ASTM-A36 hot rolled steel, meets or exceeds minimum yield strength of 36,000 PSI.
- Base templates provided with order. Do not pre-pour.

Base Cover

- Cast from heavy gauge quality aluminum. Two piece cover for easy installation.

Pole Cap

- Color-integrated polymer snap-to-close pole cap provided in black.

Finish

- All poles are shot-blasted and cleaned to a near-white finish prior to painting. A Quali-Guard® textured thermoplastic polyester powder coat is then applied to a minimum of 3 millimeters and then oven-baked at a temperature of 400°F to promote exceptional adhesion and finish hardness. Pole finish is warranted for a full two (2) years. An optional five (5) year extended warranty is also available (primo coat and rust inhibiting internal coating).

Anchor Bolts

- Poles are provided with hot-dip galvanized anchor bolts, with a "J" bend on one end and two flat bar ends and two flat washers per bolt. Anchor bolts meet or exceed a minimum of 36,000 PSI. Anchor bolts conform to ASTM F1554 grade 36 and are provided.

Notes

- 3500 PSI MIN. 28 DAY COMPRESSIVE STRENGTH CONCRETE WITH GRADE 60 REINFORCING STEEL.
- IF WATER IS PRESENT IN HOLE, REMOVE BEFORE POURING CONCRETE.
- FOUNDATION EXCAVATION SHALL BE BY 24" AUGER IN UNDISTURBED OR PROPERLY COMPACTED FILL PER SPECIFICATIONS.
- FOUNDATION SHALL HAVE A MINIMUM ALLOWABLE END BEARING OF 2000 PSF.
- FOUNDATION HAS BEEN DESIGNED FOR A COHESIVE SOIL BASED ON A MINIMUM COHESIVE VALUE OF 1000 PSF.
- FOUNDATION HAS BEEN DESIGNED FOR A GRANULAR SOIL BASED ON A MINIMUM LATERAL SOIL PRESSURE OF 1000 PSF, UTILIZING AASHTO FIGURE 1.8.2C(4) OF "EMBEDMENT OF POSTS WITH OVERTURNING LOADS".
- DETAIL FOR 25" POLE WITH MAX. FIXTURE EPA 6.1 SQ.FT., SUITABLE FOR WIND ZONES UP 100 MPH.
- ALL LIGHT POLE BASE FOUNDATIONS SHALL BE CAST-IN-PLACE. PRE-CAST LIGHT POLE BASE FOUNDATIONS ARE NOT ACCEPTABLE.
- SQUARE STEEL POLE TO BE BY VISIONAIRE AND INSTALLED PER MANUFACTURER'S SPECIFICATIONS.

TYPICAL LIGHT POLE BASE (ALL 'LD' FIXTURES)
 NOT TO SCALE

VISIONAIRE LIGHTING

American LED

Project Name: _____ Catalog Number: _____ Type: _____

Dimensional Drawings

Fixture	A	B	C	Strips	Max. Watts	Lbs.
AME-2-L	19"	19"	12"	2"	238 W	29
AME-4-L	23"	23"	16"	2"	373 W	68

The new American LED Luminaire from Visionaire combines contemporary design with new LED technology, while maintaining a traditional fixture image. The LEDs Performance and Life are maximized by the unique aluminum heat sink built into the door frame. Maintenance of the drivers is simplified by making them easily accessible and provided with quick wiring connections.

The American LED series is an exceptional choice for auto dealerships, shopping centers, commercial parking lots and general parking area lighting.

Model	Optics	Source	Current	Relat.	Voltage	Mounting	Finish	Options
AME-2-L	Type II (T2)	350 (3)	400K	120-277	400V	Ball-On Arm (BOA)	Bronze (BZ)	Photo Recptacle (PC212) (PC238) (PC244) (PC277)
	Type III (T3)	144 (144LC)	530K (S5K)	480 (8)	500K (S5K)	Knuckle Mount (KM)	Smooth Black (SBK)	Photo Recptacle (PR)
	Type IV (T4)			347 (8)		Wall Mount (WM)	White (WH)	Button Type Photocell (PC128) (PC238) (PC244) (PC277)
	Type V (T5)					Wall Mount (WM)	White (WH)	House Side Light Shield (HLS)
	Type VI (T6)					Slider Mount (SM)	Smooth White (SWH)	Bladed Pole Plate Adapter For 2 1/2" Pole (PPA) For 2 1/2" Pole (PPA)
	Type VII (T7)						Graphite (GP)	0-10V Dimming Driver (DDM)
	Type VIII (T8)						Grey (GY)	Motion Sensor (MS)
	Type IX (T9)						Silver Metallic (SL)	Wireless Controls (WC)
	Type X (T10)						Custom Color (CC)	

VISIONAIRE LIGHTING

Oden LED

Project Name: _____ Catalog Number: _____ Type: _____

Housing

- High-quality, one-piece spun aluminum shade and durable cast aluminum top cap, available in two housing sizes.
- All external hardware is stainless steel.
- One-piece, cast-aluminum door assembly with tool-less access.

Thermal Management

- The Oden LED provides excellent overall thermal management by maximizing the efficiency of the heat sink in the fixture. This enables the Oden LED to withstand higher ambient temperatures and higher drive currents without degrading LED life.

Optical System

- The highest lumen output Everc LEDs are utilized. Estimated life of the LEDs is 100,000+ hours. Available with 6 IES distribution patterns. Available with up to 84 LEDs. The optical system qualifies as IES full cutoff and is Dark-Sky certified to restrict light trespass, glare and light pollution for neighborhood-friendly lighting.
- CRI values are 70 for 4000K and 75 for 5500K.

Quali-Guard® Finish

- Fixture components are chemically pretreated through a multiple-stage washer and finished with an electrostatically-applied, thermoplastic polyester powder coat textured paint with a 3 to 5 mils thickness. Finish is oven-baked at 400°F for maximum adhesion and finish hardness.
- Available in standard and custom colors.

Electrical Assembly

- The Oden LED is supplied with a high-performance LED driver, located in its cap, that accepts 120 V thru 480 V, 50 Hz to 60 Hz input. Power factor is 95%. Rated for -40°F operation.
- High-voltage system offers motion control or factory preset switching options. Consult factory for specific details.
- 5 kV surge protector supplied as standard.

Warranty

- Five (5) year Limited Warranty on entire system, including finish. For full warranty information, please visit VisionaireLighting.com.

Solar Panel Option

- The Oden is compatible for use with Visionaire Lighting's Solar Panel Pole™.

Options

- Button type photocell
- Fusing
- Dual circuit
- 10KV Surge Protector
- Cutoff lower system
- High-voltage system
- 0-10 V dimming driver

Listings

- Oden is UL listed, suitable for wet locations.
- Dark-Sky Friendly® certified by the International Dark-Sky Association.
- RoHS compliant.
- IP65.
- LM79.
- LM80.
- Powder Coated Tough™ finish.

Mounting

- The Oden LED mounts to a wide selection of decorative and custom mounting arms for both pole and wall mount applications (see Mounting Arms section of catalog).

Typical Decorative Arms - (Additional Arms in Mounting Arm Section)

EPA Data

Fixture	Fixture Only	2 Fixtures with VA110-S1	2 Fixtures with VA110-D2	2 Fixtures with VA107-S1	2 Fixtures with VA107-D2
ODN-2-L	1.2	2.2	4.1	3.5	5.6
ODN-3-L	2.6	3.6	6.6	4.9	8.3

LED Data Chart for 5500K

# Bars	# LEDs	Output mA	Type 1	Type 2	Type 3	Type 4	Type 5	Type 5-W	System Watts	L70 Hours
1	42	350	3,840	3,941	3,754	3,811	3,988	4,140	46	150,000
		550	4,647	5,132	4,925	4,855	5,410	5,644	68	100,000
		350	7,507	7,863	6,663	7,320	7,076	8,260	92	150,000
2	84	530	9,155	10,263	9,998	9,710	10,820	11,295	136	100,000

VISIONAIRE LIGHTING

SNTS

Project Name: _____ Catalog Number: _____ Type: _____

Specifications

Model	Shaft Size	Gauge	Height	Base	Anchorage	Mounting	Finish	Options
SNTS	4" x 4"	11 (11)	10"	9" Base (9BC)	1/2" x 3/8" (3A3)	Ball-On-Arm Single (S1)	Black (BK)	GFI Receptacle (GFR)
			12"	12" Base (12BC)	1" x 3/8" (13A)		White (WH)	Custom Bolt Circle (CBC)
			14"	12" Base (12BC)	1" x 3/8" (13A)		Green (GN)	
			16"	12" Base (12BC)	1" x 3/8" (13A)		Forest Green (FG)	
			20"	12" Base (12BC)	1" x 3/8" (13A)		Grey (GY)	
			22"	12" Base (12BC)	1" x 3/8" (13A)		Silver Metallic (SL)	
			25"	12" Base (12BC)	1" x 3/8" (13A)		Custom Color (CC)	
			30"	12" Base (12BC)	1" x 3/8" (13A)			

Base

- Square Pole base is ASTM-A36 hot rolled steel, meets or exceeds minimum yield strength of 36,000 PSI.
- Base templates provided with order. Do not pre-pour.

Base Cover

- Cast from heavy gauge quality aluminum. Two piece cover for easy installation.

Pole Cap

- Color-integrated polymer snap-to-close pole cap provided in black.

Finish

- All poles are shot-blasted and cleaned to a near-white finish prior to painting. A Quali-Guard® textured thermoplastic polyester powder coat is then applied to a minimum of 3 millimeters and then oven-baked at a temperature of 400°F to promote exceptional adhesion and finish hardness. Pole finish is warranted for a full two (2) years. An optional five (5) year extended warranty is also available (primo coat and rust inhibiting internal coating).

Anchor Bolts

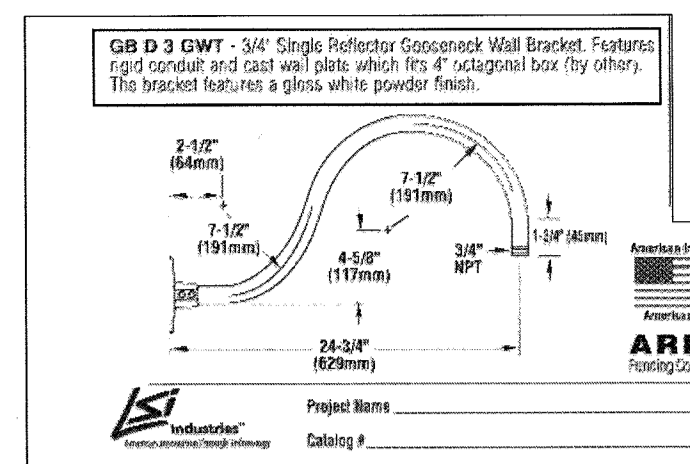
- Poles are provided with hot-dip galvanized anchor bolts, with a "J" bend on one end and two flat bar ends and two flat washers per bolt. Anchor bolts meet or exceed a minimum of 36,000 PSI. Anchor bolts conform to ASTM F1554 grade 36 and are provided.

Notes

- 3500 PSI MIN. 28 DAY COMPRESSIVE STRENGTH CONCRETE WITH GRADE 60 REINFORCING STEEL.
- IF WATER IS PRESENT IN HOLE, REMOVE BEFORE POURING CONCRETE.
- FOUNDATION EXCAVATION SHALL BE BY 24" AUGER IN UNDISTURBED OR PROPERLY COMPACTED FILL PER SPECIFICATIONS.
- FOUNDATION SHALL HAVE A MINIMUM ALLOWABLE END BEARING OF 2000 PSF.
- FOUNDATION HAS BEEN DESIGNED FOR A COHESIVE SOIL BASED ON A MINIMUM COHESIVE VALUE OF 1000 PSF.
- FOUNDATION HAS BEEN DESIGNED FOR A GRANULAR SOIL BASED ON A MINIMUM LATERAL SOIL PRESSURE OF 1000 PSF, UTILIZING AASHTO FIGURE 1.8.2C(4) OF "EMBEDMENT OF POSTS WITH OVERTURNING LOADS".

SITE DEVELOPMENT PLAN

LOT 1, BLOCK 6, PROMENADE AT CASTLE ROCK FILING NO. 1 LOCATED IN THE N. 1/2 OF SEC. 27, T. 7 S., R. 67 W., OF THE 6TH P. M., COUNTY OF DOUGLAS, STATE OF COLORADO



esco
LIGHTING, INC.

SX606 Series
6" Diameter Extruded Aluminum Cylinder
E2500 Mounting System
Surface, Pendant, Wall or Up/Down
Compact Fluorescent
U.S. Patent No. D570035

HOW TO ORDER

Surface Mount	Watts	Lamp Base	Color
SX606D1	PL15W	G24q-1	White - W
SX606D2	PL18W	G24q-2	Bronze - BZ
SX606D3	PL26W	G24q-2	Black - BL
SX606T2	PLT18W	GX24q-2	
SX606T3	PLT26W	GX24q-3	
SX606T4	PLT32W	GX24q-3	

APERTURE ACCESSORIES

Accessory	Part Number	Notes
Mini-Groove Black Baffle	Example: SX606P1	Replaces 60" catalog number with 61"
Louver Guard	Example: SX606L1	Suffix catalog number with LG1
Trunion Mount	Example: SX606T1	Change B in catalog number to T
Pendant Mount Suffix	Example: SX606P2	P20" X" long stem (standard)
E2500 Wall Mount	Example: SX606W1	Change Prefix SX to WX00
Up/Down E2500 Wall Mount	Example: SX606U1	Change Prefix SX to WX00
Dimming Ballast	Example: SX606D1	Suffix catalog number with DM
Emergency Ballast	Example: SX606E1	Suffix catalog number with EM
Remote Emergency Ballast	Example: SX606R1	Suffix catalog number with REM
Photo Control	Example: SX606PC1	Suffix catalog number with PC
Fuse and Fuse Holder	Example: SX606F1	Suffix catalog number with F

Dimensions

Labels

WBCE City of Chicago Certified
3254 North Kilbourn Avenue Chicago, Illinois 60641-4505
Phone: 773-427-7000 Fax: 800-217-1260 www.escoighting.com
Established 1975

esco
LIGHTING, INC.

SX606 Series
6" Diameter Extruded Aluminum Cylinder
E2500 Mounting System
Surface, Pendant, Wall or Up/Down
Compact Fluorescent
U.S. Patent No. D570035

HOW TO ORDER

Surface Mount	Watts	Lamp Base	Color
SX606D1	PL15W	G24q-1	White - W
SX606D2	PL18W	G24q-2	Bronze - BZ
SX606D3	PL26W	G24q-2	Black - BL
SX606T2	PLT18W	GX24q-2	
SX606T3	PLT26W	GX24q-3	
SX606T4	PLT32W	GX24q-3	

APERTURE ACCESSORIES

Accessory	Part Number	Notes
Mini-Groove Black Baffle	Example: SX606P1	Replaces 60" catalog number with 61"
Louver Guard	Example: SX606L1	Suffix catalog number with LG1
Trunion Mount	Example: SX606T1	Change B in catalog number to T
Pendant Mount Suffix	Example: SX606P2	P20" X" long stem (standard)
E2500 Wall Mount	Example: SX606W1	Change Prefix SX to WX00
Up/Down E2500 Wall Mount	Example: SX606U1	Change Prefix SX to WX00
Dimming Ballast	Example: SX606D1	Suffix catalog number with DM
Emergency Ballast	Example: SX606E1	Suffix catalog number with EM
Remote Emergency Ballast	Example: SX606R1	Suffix catalog number with REM
Photo Control	Example: SX606PC1	Suffix catalog number with PC
Fuse and Fuse Holder	Example: SX606F1	Suffix catalog number with F

Dimensions

Labels

WBCE City of Chicago Certified
3254 North Kilbourn Avenue Chicago, Illinois 60641-4505
Phone: 773-427-7000 Fax: 800-217-1260 www.escoighting.com
Established 1975

LSI ABOLITE® LED ANGLED REFLECTOR (AD)

APPLICATIONS - Signage Lighting and Accent Lighting, Interior or Exterior.
PRODUCT HIGHLIGHTS

- **"Green" Energy Saving** - Reduces greenhouse gas emissions, reduces operating costs, extends life and eliminates costly lamp disposal involving mercury waste.
- **Long Lasting Sparkle** - LED light beam contains no heat, and no UV, which means degradation in color or quality of the product under display is minimized.
- **Unusually Low Maintenance Costs** - 60,000-hour LED source extends life 3 to 5 times as compared to conventional HD sources, 30 times incandescent.
- **Integrated Power Supply** - Built into fixture allowing RLM to be connected directly to line voltage.
- **EXPECTED LIFE** - Minimum 60,000 hours to 100,000 hours depending upon the ambient temperature of the installation location.
- **LED'S** - Select high-brightness LEDs in Cool White (5000°K nominal), Neutral White (4000°K nominal), and Warm White (2700°K nominal) color temperature. 70 CRI (nominal) DM, 80 CRI (nominal) RW and WW.

OPTIONAL DIRECTIONAL OPTICS - Allows field adjustment of the light beam for directional illumination of signage.

REFLECTOR - Heavy duty spun galvanized steel construction with polyester powder coat finish.

LIGHT OUTPUT - With an input power of 11 watts: DD - Directional Directional Optics (nominal) - Cool White - 870 lumens, Neutral White - 810 lumens and Warm White - 740 lumens. Symmetric Optics (nominal) - Cool White - 955 lumens, Neutral White - 760 lumens and Warm White - 700 lumens.

MOUNTING - Fixed but tapped for 3/4" NPT conduit. Pre-wired with 96" leads. Not designed for uplight applications.

ELECTRICAL - Integral, space protected power supply operates on 120-240 VAC (50/60Hz) input, no external power supplies required.

DRIVER - State-of-the-art driver designed specifically for RLM fixtures provides unsurpassed system efficiency. Components are fully enclosed in potting material for maximum resistance. Driver complies with IEC and FCC standards.

OPERATING TEMPERATURE - -40° to +100° (-40°F to +125°F).

FINISH - Available in either architectural brushed, high gloss or satin finish.

LISTING - LSI LED fixtures carry a limited 5-year warranty.

WARNING - Listed to U.S. and Canadian safety standards. Suitable for wet locations.

Dimensions

Profile

Profile	Height (A)	Diameter (B)	Mask (C)	Weight (lb)
AD 100	10.00	2.75	1.125	1.1
AD 150	15.00	2.75	1.125	1.6
AD 200	20.00	2.75	1.125	2.1
AD 250	25.00	2.75	1.125	2.6

Also available in traditional light sources

ARRA Factory Certified

Project Name _____ Fixture Type _____ 01/21/14
Catalog # _____ LSI INDUSTRIES INC.

LSI ABOLITE® LED ANGLED REFLECTOR (AD)

LUMINAIRE ORDERING INFORMATION

TYPICAL ORDER EXAMPLE: AD 200 10 CW LED UE MSV LDS96 WL DD

APERTURE ACCESSORIES

Accessory	Part Number	Notes
Mini-Groove Black Baffle	Example: SX606P1	Replaces 60" catalog number with 61"
Louver Guard	Example: SX606L1	Suffix catalog number with LG1
Trunion Mount	Example: SX606T1	Change B in catalog number to T
Pendant Mount Suffix	Example: SX606P2	P20" X" long stem (standard)
E2500 Wall Mount	Example: SX606W1	Change Prefix SX to WX00
Up/Down E2500 Wall Mount	Example: SX606U1	Change Prefix SX to WX00
Dimming Ballast	Example: SX606D1	Suffix catalog number with DM
Emergency Ballast	Example: SX606E1	Suffix catalog number with EM
Remote Emergency Ballast	Example: SX606R1	Suffix catalog number with REM
Photo Control	Example: SX606PC1	Suffix catalog number with PC
Fuse and Fuse Holder	Example: SX606F1	Suffix catalog number with F

Dimensions

Profile

Profile	Height (A)	Diameter (B)	Mask (C)	Weight (lb)
AD 100	10.00	2.75	1.125	1.1
AD 150	15.00	2.75	1.125	1.6
AD 200	20.00	2.75	1.125	2.1
AD 250	25.00	2.75	1.125	2.6

Also available in traditional light sources

ARRA Factory Certified

Project Name _____ Fixture Type _____ 01/21/14
Catalog # _____ LSI INDUSTRIES INC.

MANUFACTURER SPECIFICATION SHEET FOR BUILDING FIXTURE 'B1'

MANUFACTURER SPECIFICATION SHEET FOR BUILDING FIXTURE 'B2'

Compact fluorescent Pedigree

Outdoor

Type: -97

PS980

PS981

PS982

P6607

Finish

Catalog No.	Autumn	Lamping	A	B	C	D
PS980	-97	1-26W GU-24	7	10	8-1/2	2-1/2
PS981	-97	1-26W GU-24	9	13-1/4	10-1/2	5-1/2
PS982	-97	1-26W GU-24	11-1/2	16-1/2	13-1/2	5-3/4
P6607	-97	1-42W GU-24	13-1/2	19-3/8	15-3/4	6-3/4

Specifications:

General:

- Etched seeded glass curved panels
- Powder with liquid top coat Autumn Haze (-97) finish
- Aluminum construction
- Companion Chain hung lanterns, Post top lantern, Wall lantern, fixtures are available

Electrical:

- GU24 base socket
- Pre-wired

Labeling:

- cCSAus Wet location listed

Mounting:

- Wall mount
- Back plate covers a standard 4" hexagonal recessed outlet box
- PS980: 5" sq.
- PS981: 5-1/2" W., 10-1/2" ht.
- PS982: 5-1/2" W., 10-1/2" ht.
- P6607: 6-1/2" W., 12-5/16" ht.
- Companion strap for outlet box included

Progress Lighting
701 Millennium Blvd.
Greenville, South Carolina
29607
www.progresslighting.com

Rev. 01/14

Portfolio

DESCRIPTION

Each LED recessed wide beam wall wash specifically designed for LED technology. Two-stage reflector system combined with a Gradient Reflector, provides high levels of uniformity and beam spread on the wall with minimal source brightness. Color temperatures of 2700K, 3000K, 3600K, 4000K.

SPECIFICATION FEATURES

Lower Wall Wash Reflector
Spun 200" thick aluminum lower reflector with gradient kick-in combination with a beveled upper optical chamber provides superior lumen output, high level vertical illumination with minimal source brightness. Available in all Portfolio A2480 finishes.

Trim Retention
Reflector is finished with two tension springs holding the flange tightly to the finished ceiling surface.

Plaster Frame / Collar
New Construction: Hinged. Cast aluminum 1-1/2" deep collar accommodates ceiling materials up to 3".

Universal Mounting Bracket
Accepts 1/2" EMT, C channel and bar hangers and adjusts vertically from above and below the ceiling.

Junction Box
(4) 1/2" and (2) 3/4" trade size pry outs positioned to allow straight conduit runs. Listed for 80-125 AWG floor to, four out 90°C conductors and feed thru branch wiring.

Thermal
Extruded aluminum heat sink conducts heat away from the LED and provides for optimal performance and long life.

LED
LED system contains a plurality of high brightness white LED's combined with a high reflectance upper reflector and convex transitional lens producing even illumination with no parallax. Rated for 50,000 hours at 70% lumen maintenance. Auto resetting, normally protected. LED's are turned off when safe operating temperature is exceeded. Color variation within 3-step Macadam ellipsoid. Flood die connected allows for flexible replacement of LED strings from below ceiling. Available in 80 or 90 CRI.

Driver
Driver can be provided from above or through the aperture.

Code Compliance
Thermally protected and cULus listed for protected damp locations. Optional City of Chicago environmental air (CEEA) marking for green applications. EMI/RFI emissions per FCC 47CFR Part 15 Class B connector limits. Non-FC rated - Installation must be least 5" from top and sides of housing. PHS Compliant, ARRA Compliant. Photometric testing completed in accordance with IES LM 79 standards. LED life testing completed in accordance with LM 80 standards.

Warranty
5 year warranty.

LD6A10 LD6A15 LD6A20 LD6A30 GLW111

1000, 1500 Lumens LED
2000, 3000 Lumens LED

6 inch
Wide Beam Wall Wash
New Construction

TOP VIEW - NEW CONSTRUCTION

TOP VIEW - NEW CONSTRUCTION WITH BRACKET

ARRA Factory Certified

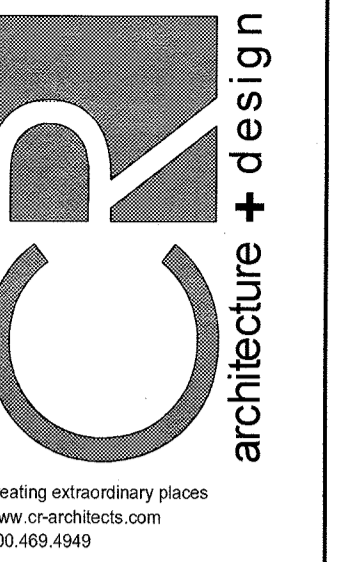
Project Name _____ Fixture Type _____ 01/21/14
Catalog # _____ LSI INDUSTRIES INC.

LED SOFFIT LIGHT (XSL2)

UNITS ARE 50/100/150/200/250/300/350/400/450/500/550/600/650/700/750/800/850/900/950/1000/1050/1100/1150/1200/1250/1300/1350/1400/1450/1500/1550/1600/1650/1700/1750/1800/1850/1900/1950/2000/2050/2100/2150/2200/2250/2300/2350/2400/2450/2500/2550/2600/2650/2700/2750/2800/2850/2900/2950/3000/3050/3100/3150/3200/3250/3300/3350/3400/3450/3500/3550/3600/3650/3700/3750/3800/3850/3900/3950/4000/4050/4100/4150/4200/4250/4300/4350/4400/4450/4500/4550/4600/4650/4700/4750/4800/4850/4900/4950/5000/5050/5100/5150/5200/5250/5300/5350/5400/5450/5500/5550/5600/5650/5700/5750/5800/5850/5900/5950/6000/6050/6100/6150/6200/6250/6300/6350/6400/6450/6500/6550/6600/6650/6700/6750/6800/6850/6900/6950/7000/7050/7100/7150/7200/7250/7300/7350/7400/7450/7500/7550/7600/7650/7700/7750/7800/7850/7900/7950/8000/8050/8100/8150/8200/8250/8300/8350/8400/8450/8500/8550/8600/8650/8700/8750/8800/8850/8900/8950/9000/9050/9100/9150/9200/9250/9300/9350/9400/9450/9500/9550/9600/9650/9700/9750/9800/9850/9900/9950/10000/10050/10100/10150/10200/10250/10300/10350/10400/10450/10500/10550/10600/10650/10700/10750/10800/10850/10900/10950/11000/11050/11100/11150/11200/11250/11300/11350/11400/11450/11500/11550/11600/11650/11700/11750/11800/11850/11900/11950/12000/12050/12100/12150/12200/12250/12300/12350/12400/12450/12500/12550/12600/12650/12700/12750/12800/12850/12900/12950/13000/13050/13100/13150/13200/13250/13300/13350/13400/13450/13500/13550/13600/13650/13700/13750/13800/13850/13900/13950/14000/14050/14100/14150/14200/14250/14300/14350/14400/14450/14500/14550/14600/14650/14700/14750/14800/14850/14900/14950/15000/15050/15100/15150/15200/15250/15300/15350/15400/15450/15500/15550/15600/15650/15700/15750/15800/15850/15900/15950/16000/16050/16100/16150/16200/16250/16300/16350/16400/16450/16500/16550/16600/16650/16700/16750/16800/16850/16900/16950/17000/17050/17100/17150/17200/17250/17300/17350/17400/17450/17500/17550/17600/17650/17700/17750/17800/17850/17900/17950/18000/18050/18100/18150/18200/18250/18300/18350/18400/18450/18500/18550/18600/18650/18700/18750/18800/18850/18900/18950/19000/19050/19100/19150/19200/19250/19300/19350/19400/19450/19500/19550/19600/19650/19700/19750/19800/19850/19900/19950/20000/20050/20100/20150/20200/20250/20300/20350/20400/20450/20500/20550/20600/20650/20700/20750/20800/20850/20900/20950/21000/21050/21100/21150/21200/21250/21300/21350/21400/21450/21500/21550/21600/21650/21700/21750/21800/21850/21900/21950/22000/22050/22100/22150/22200/22250/22300/22350/22400/22450/22500/22550/22600/22650/22700/22750/22800/22850/22900/22950/23000/23050/23100/23150/23200/23250/23300/23350/23400/23450/23500/23550/23600/23650/23700/23750/23800/23850/23900/23950/24000/24050/24100/24150/24200/24250/24300/24350/24400/24450/24500/24550/24600/24650/24700/24750/24800/24850/24900/24950/25000/25050/25100/25150/25200/25250/25300/25350/25400/25450/25500/25550/25600/25650/25700/25750/25800/25850/25900/25950/26000/26050/26100/26150/26200/26250/26300/26350/26400/26450/26500/26550/26600/26650/26700/26750/26800/26850/26900/26950/27000/27050/27100/27150/27200/27250/27300/27350/27400/27450/27500/27550/27600/27650/27700/27750/27800/27850/27900/27950/28000/28050/28100/28150/28200/28250/28300/28350/28400/28450/28500/28550/28600/28650/28700/28750/28800/28850/28900/28950/29000/29050/29100/29150/29200/29250/29300/29350/29400/29450/29500/29550/29600/29650/29700/29750/29800/29850/29900/29950/30000/30050/30100/30150/30200/30250/30300/30350/30400/30450/30500/30550/30600/30650/30700/30750/30800/30850/30900/30950/31000/31050/31100/31150/31200/31250/31300/31350/31400/31450/31500/31550/31600/31650/31700/31750/31800/31850/31900/31950/32000/32050/32100/32150/32200/32250/32300/32350/32400/32450/32500/32550/32600/32650/32700/32750/32800/32850/32900/32950/33000/33050/33100/33150/33200/33250/33300/33350/33400/33450/33500/33550/33600/33650/33700/33750/33800/33850/33900/33950/34000/34050/34100/34150/34200/34250/34300/34350/34400/34450/34500/34550/34600/34650/34700/34750/34800/34850/34900/34950/35000/35050/35100/35150/35200/35250/35300/35350/35400/35450/35500/35550/35600/35650/35700/35750/35800/35850/35900/35950/36000/36050/36100/36150/36200/36250/36300/36350/36400/36450/36500/36550/36600/36650/36700/36750/36800/36850/36900/36950/37000/37050/37100/37150/37200/37250/37300/37350/37400/37450/37500/37550/37600/37650/37700/37750/37800/37850/37900/37950/38000/38050/38100/38150/38200/38250/38300/38350/38400/38450/38500/38550/38600/38650/38700/38750/38800/38850/38900/38950/39000/39050/39100/39150/39200/39250/39300/39350/39400/39450/39500/39550/39600/39650/39700/39750/39800/39850/39900/39950/40000/40050/40100/40150/40200/40250/40300/40350/40400/40450/40500/40550/40600/40650/40700/40750/40800/40850/40900/40950/41000/41050/41100/41150/41200/41250/41300/41350/41400/41450/41500/41550/41600/41650/41700/41750/41800/41850/41900/41950/42000/42050/42100/42150/42200/42

SITE DEVELOPMENT PLAN

LOT 1, BLOCK 6, PROMENADE AT CASTLE ROCK FILING NO. 1
LOCATED IN THE N. 1/2 OF SEC. 27, T. 7S., R. 67 W., OF THE 6TH P.M.,
COUNTY OF DOUGLAS, STATE OF COLORADO

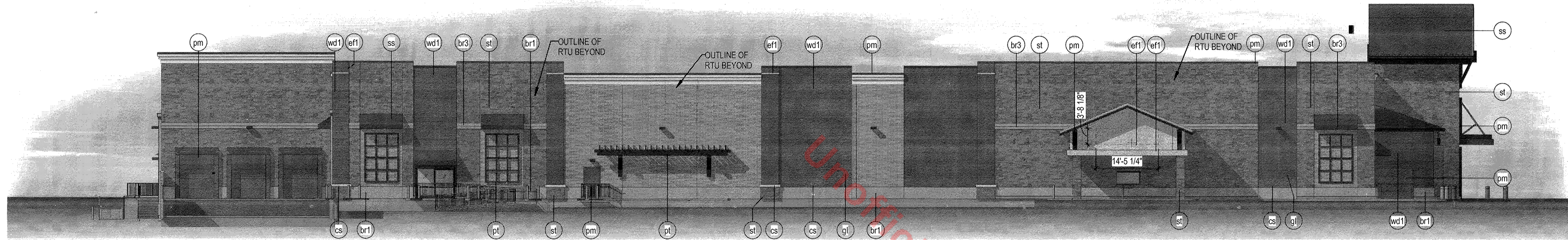


creating extraordinary places
www.cr-architects.com
800.469.4949

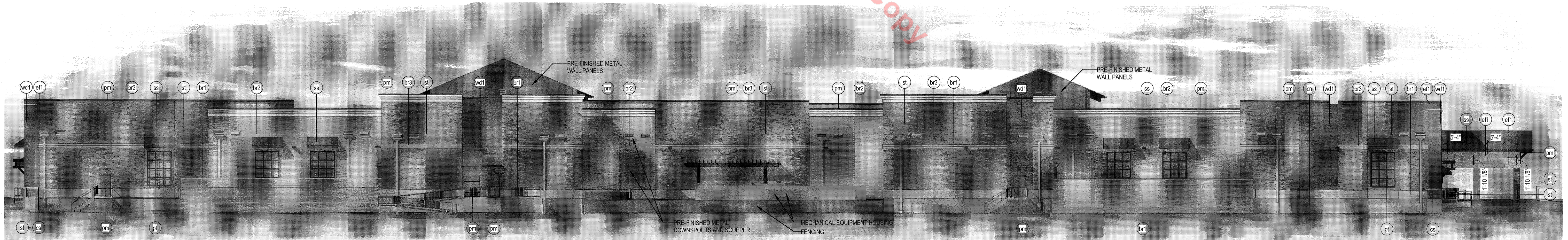
COPYRIGHT
THESE PLANS ARE AN INSTRUMENT OF SERVICE AND ARE THE PROPERTY OF GALLOWAY. AND MAY NOT BE DUPLICATED, DISCLOSED, OR REPRODUCED WITHOUT THE WRITTEN CONSENT OF THE ARCHITECT. COPYRIGHTS AND INFRINGEMENTS WILL BE ENFORCED AND PROSECUTED.



EAST ELEVATION

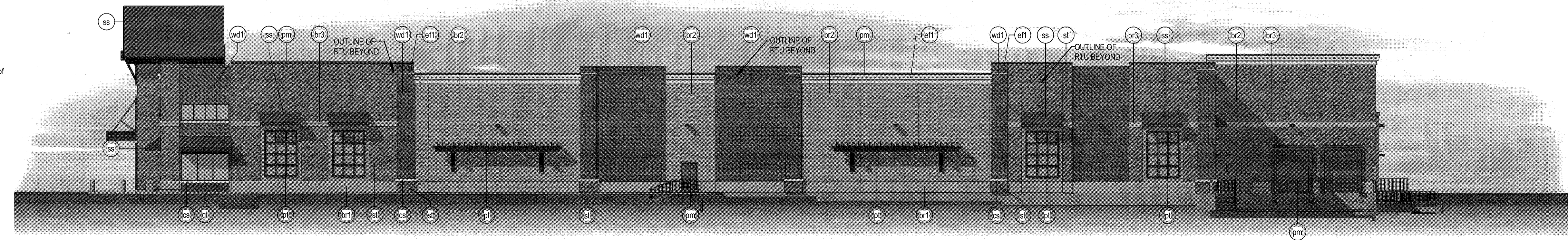


SOUTH ELEVATION



WEST ELEVATION

- FINISH SCHEDULE**
- st Cultured Stone
 - pm Prefinished Metal
 - wd1 Siding
 - cs Cast Stone
 - gl Glazing
 - pt Painted Metal
 - br1 Masonry
 - br2 Masonry
 - br3 Masonry
 - ss Standing Seam Metal Roof
 - eff1 E.I.F.S.
 - eff2 E.I.F.S.



NORTH ELEVATION

KING SOOPERS #125
PROMENADE AT CASTLE ROCK
KING SOOPERS
65 TEJON STREET, DENVER, CO 80223

#	Date	Issue/Description	Init.

Project No:
Drawn By: JJA
Checked By: JRR
Date: 9-14-2015

Elevations

