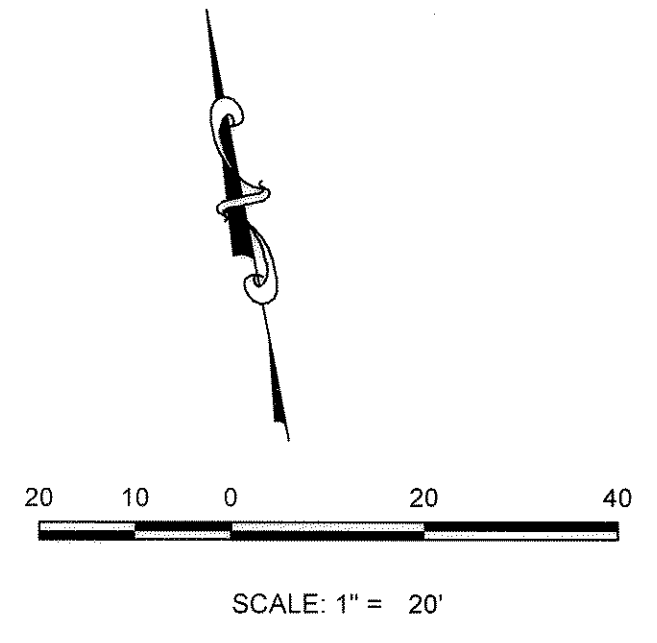


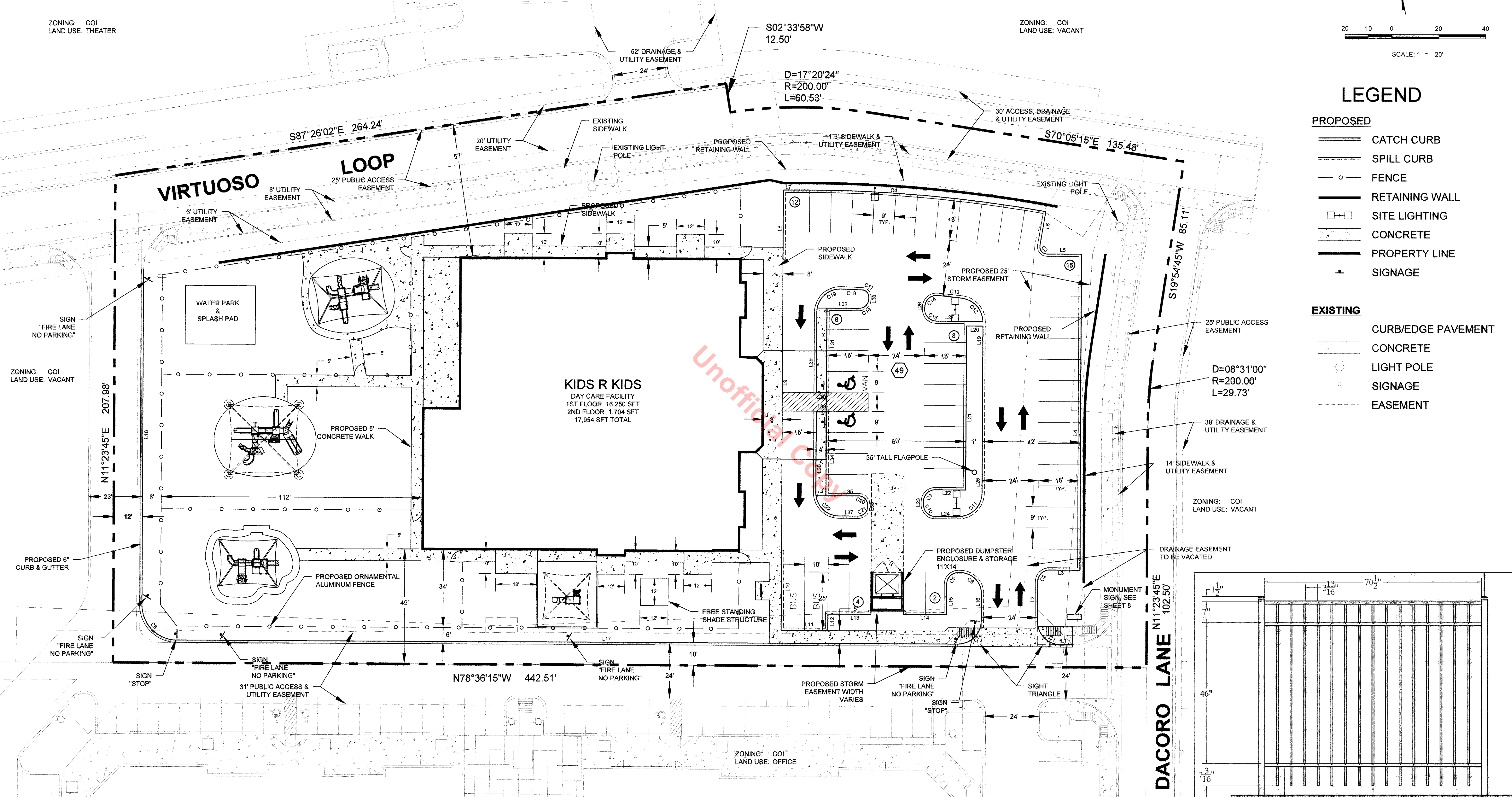
SITE DEVELOPMENT PLAN

LOT 6E-2, THE MEADOWS FILING NO. 17, AREA NO. 4, AMENDMENT NO. 7
TOWN OF CASTLE ROCK, COUNTY OF DOUGLAS, STATE OF COLORADO



ZONING: COI
LAND USE: THEATER

ZONING: COI
LAND USE: VACANT

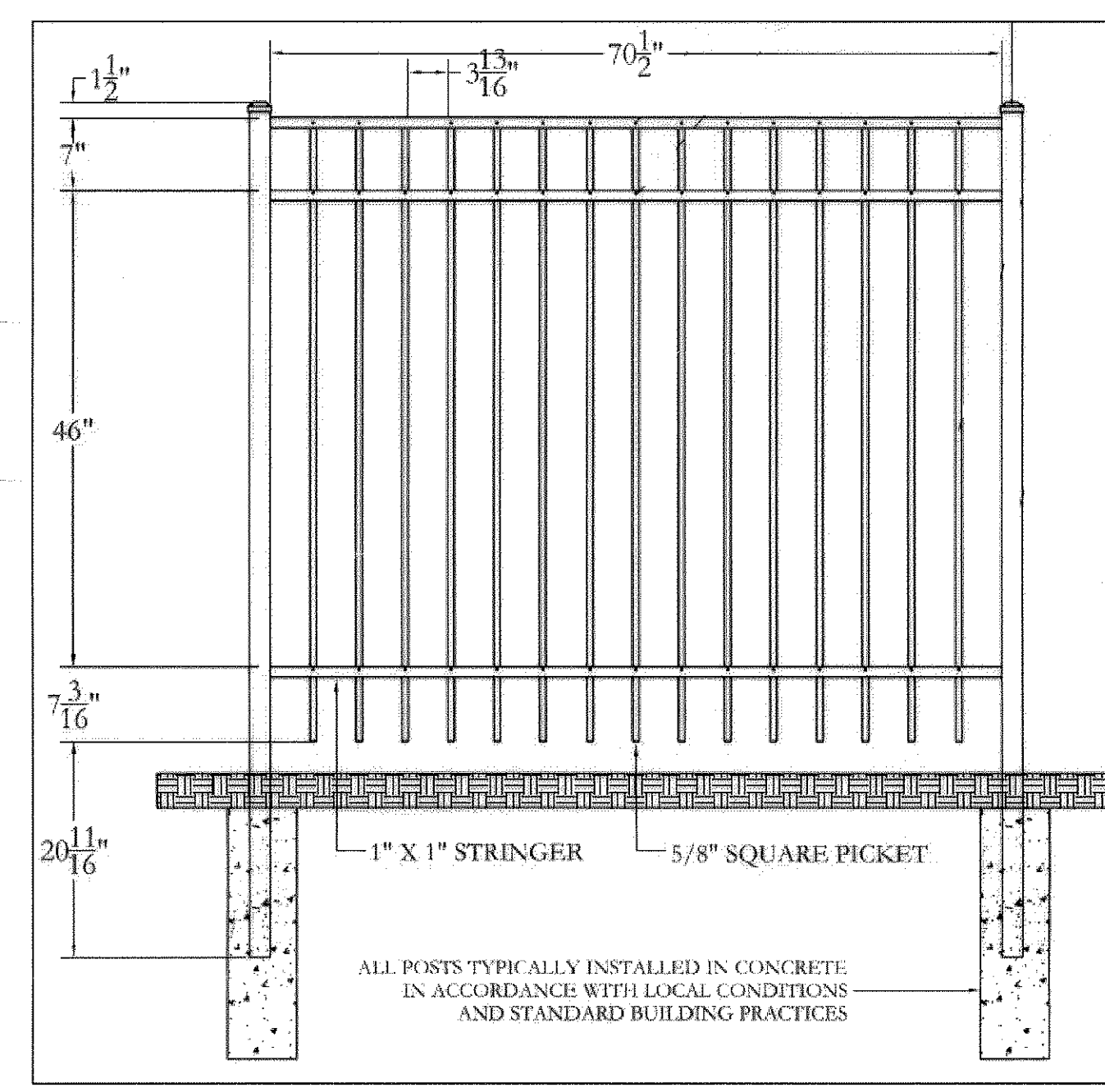


LEGEND

PROPOSED	
	CATCH CURB
	SPILL CURB
	FENCE
	RETAINING WALL
	SITE LIGHTING
	CONCRETE
	PROPERTY LINE
	SIGNAGE
EXISTING	
	CURB/EDGE PAVEMENT
	CONCRETE
	LIGHT POLE
	SIGNAGE
	EASEMENT

Line Table			Line Table			Line Table			Line Table			Curve Table				Curve Table			
Line #	Length	Direction	Line #	Length	Direction	Line #	Length	Direction	Line #	Length	Direction	Curve #	Length	Radius	Delta	Curve #	Length	Radius	Delta
L1	5.02	S78° 36' 15.00"E	L11	20.00	S78° 36' 15.00"E	L20	7.00	S78° 36' 15.00"E	L30	15.71	10.00	C1	15.71	10.00	090° 00' 00"	C12	14.53	10.00	083° 14' 41"
L2	16.88	N11° 23' 45.00"W	L12	7.00	S11° 23' 45.00"W	L21	70.00	S11° 23' 45.00"W	L31	36.01	S11° 23' 45.00"W	C2	7.85	5.00	090° 00' 00"	C13	10.75	567.16	001° 05' 08"
L3	13.00	S78° 36' 15.00"E	L13	18.50	S78° 36' 15.00"E	L22	13.00	N78° 36' 15.00"W	L32	13.99	S78° 36' 15.00"E	C3	5.22	3.00	099° 36' 24"	C14	8.35	5.00	095° 40' 11"
L4	135.00	S11° 23' 45.00"W	L14	18.50	S78° 36' 15.00"E	L23	1.33	S11° 23' 45.00"W	L33	4.33	S78° 38' 49.81"E	C4	108.35	609.16	010° 11' 28"	C15	7.85	5.00	090° 00' 00"
L5	14.88	S78° 36' 15.00"E	L15	13.00	S11° 23' 45.00"W	L24	10.00	S78° 36' 15.00"E	L34	35.97	S11° 23' 45.00"W	C5	7.85	5.00	090° 00' 00"	C16	6.28	4.00	090° 00' 00"
L6	14.84	S21° 00' 09.46"W	L16	11.52	S11° 23' 45.00"W	L25	71.34	N11° 23' 45.00"E	L35	13.99	S78° 36' 15.00"E	C6	14.14	9.00	090° 00' 00"	C17	4.58	3.00	087° 22' 51"
L7	4.67	S79° 08' 22.23"E	L17	334.49	S78° 36' 15.00"E	L26	1.04	S11° 23' 45.00"W	L36	0.85	S11° 23' 45.00"E	C7	15.71	10.00	090° 00' 00"	C18	9.17	567.16	000° 55' 37"
L8	29.80	N11° 23' 45.00"E	L18	143.23	S11° 23' 30.11"W	L27	20.00	S78° 36' 15.00"E	L37	8.33	S78° 36' 15.00"E	C8	23.56	15.00	089° 59' 45"	C19	16.00	10.00	091° 41' 33"
L9	124.00	N11° 23' 45.00"E	L19	71.34	N11° 23' 45.00"E	L28	0.88	N11° 23' 45.00"E	L38	34.62	S11° 23' 45.00"W	C9	7.85	5.00	090° 00' 00"	C20	6.28	4.00	090° 00' 00"
L10	34.26	S11° 23' 45.00"W			L29	34.24	S11° 23' 45.00"W					C10	7.85	5.00	090° 00' 00"	C21	6.28	4.00	090° 00' 00"
												C11	15.71	10.00	090° 00' 00"	C22	15.71	10.00	090° 00' 00"

- ### GENERAL NOTES
- RETAINING WALL SHALL BE SEGMENTAL BLOCK BY ALAN BLOCK, ASHLAR COLLECTION, SUPPLIED BY BASALITE.
 - FENCING FOR THE PLAYGROUND AREA SHALL BE BLACK ALUMINUM IN ACCORDANCE WITH THE DETAIL SHOWN ON THIS SHEET. EXTERIOR FENCING SHALL BE 6 FT IN HEIGHT WHILE THE INTERIOR FENCING SHALL BE 4 FEET IN HEIGHT.
 - INTERIOR AREAS OF PLAY STRUCTURES SHALL CONSIST OF POUR 'N PLAY RUBBERIZED MATERIAL. SEE ARCHITECTURAL PLANS FOR DETAILS.



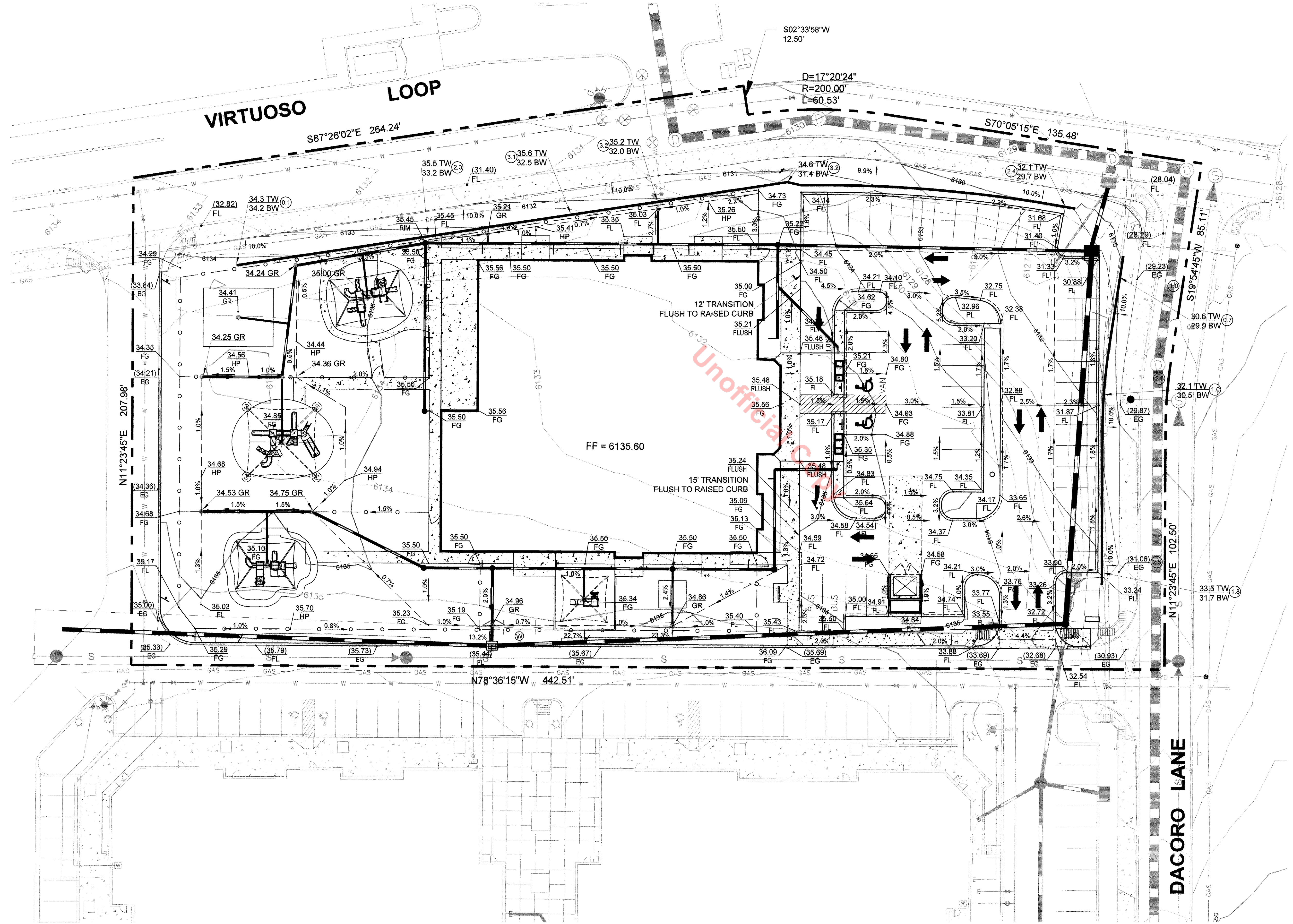
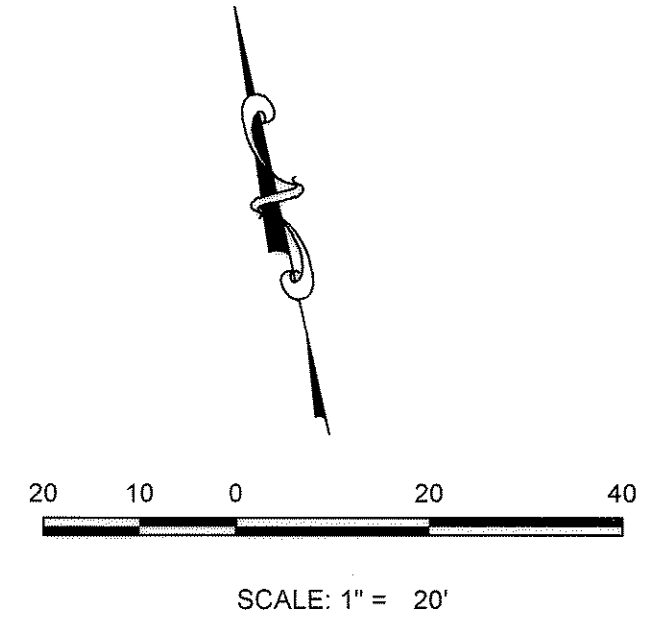
FENCE DETAIL

LOT 6E-2, THE MEADOWS FILING NO. 17,
AREA 4, AMENDMENT NO. 7
PROJECT NO. SDP 13-0017

 C2C ENGINEERING, LLC 6851 S. Greenway, Suite 80711 Centennial, CO 80111 P: 720-221-4520 www.c2ceng.com	 KIDS R KIDS INTERNATIONAL 1625 Executive Drive South Duluth, GA 30095	LAND PLANNING WATER RESOURCES	CIVIL ENGINEERING	Revisions No. Date Init. Appr. Date
KIDS R KIDS LEARNING ACADEMIES THE MEADOWS, CASTLE ROCK, COLORADO	SITE PLAN		SCALE: AS SHOWN FILE NO: 13-01030	DRAWN BY: KAL CHECKED BY: KAL DATE: NOVEMBER 8, 2013
SHEET NUMBER			2 OF 10	

SITE DEVELOPMENT PLAN

LOT 6E-2, THE MEADOWS FILING NO. 17, AREA NO. 4, AMENDMENT NO. 7
TOWN OF CASTLE ROCK, COUNTY OF DOUGLAS, STATE OF COLORADO



LEGEND

- EXISTING FIRE HYDRANT
- PROPOSED FIRE HYDRANT
- EXISTING/PHASE 1 WATER LINE
- PROPOSED WATER LINE
- EXISTING VALVE
- PROPOSED VALVE
- PROPOSED CURB STOP
- PROPOSED REDUCER
- PROPOSED WATER METER
- EXISTING MANHOLE
- EXISTING INLET
- EXISTING SANITARY LINE
- PROPOSED SANITARY LINE
- EXISTING STORM DRAINAGE PIPE
- EXISTING LIGHT
- PROPOSED LIGHTS
- EXISTING RIGHT OF WAY
- PROPOSED PROPERTY LINE
- PROPOSED ACCESS EASEMENT (P.A.E.)
- EXISTING ELECTRIC LINE
- EXISTING CABLE TELEVISION LINE
- EXISTING GAS LINE
- EXISTING LIGHT POLE
- P.A.E. PROPOSED ACCESS EASEMENT
- P.A.U.E. PROPOSED ACCESS AND UTILITY EASEMENT

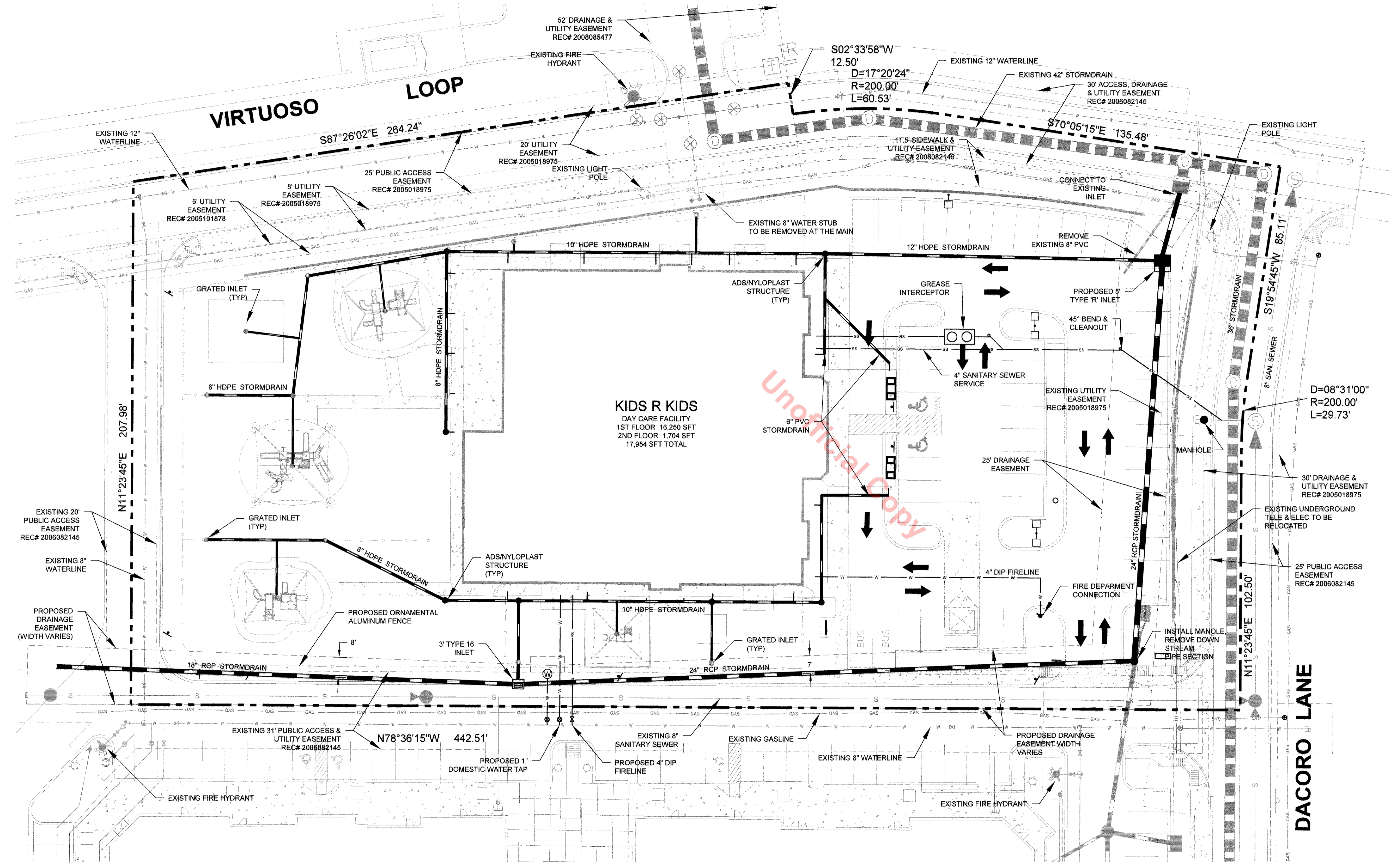
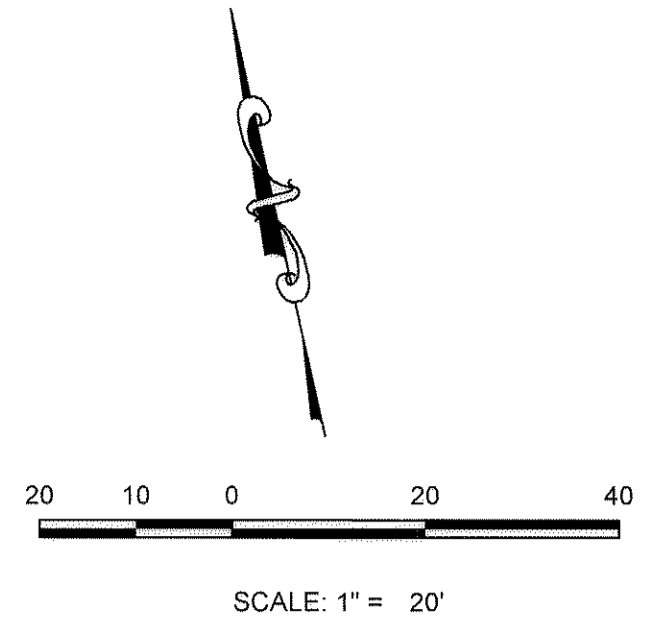
Revisions	No.	Date	Init.	Appr.	Date

C2C ENGINEERING, LLC 6851 S. Revere Parkway, Suite 140 Centennial, CO 80109 www.c2ceng.com	
ENGINEERING, LLC CIVIL ENGINEERING • WATER RESOURCES • LAND PLANNING	
 KIDS R KIDS INTERNATIONAL 1625 Executive Drive South Duluth, GA 30096	
KIDS R KIDS LEARNING ACADEMIES THE MEADOWS, CASTLE ROCK, COLORADO	
GRADING PLAN	
SCALE: AS SHOWN	FILE NO: 13-01030
DRAWN BY: KAL	CHECKED BY: KAL
DATE: NOVEMBER 8, 2013	SHEET NUMBER: 13-01030

LOT 6E-2, THE MEADOWS FILING NO. 17,
AREA 4, AMENDMENT NO. 7
PROJECT NO. SDP 13-0017

SITE DEVELOPMENT PLAN

LOT 6E-2, THE MEADOWS FILING NO. 17, AREA NO. 4, AMENDMENT NO. 7
TOWN OF CASTLE ROCK, COUNTY OF DOUGLAS, STATE OF COLORADO



LEGEND

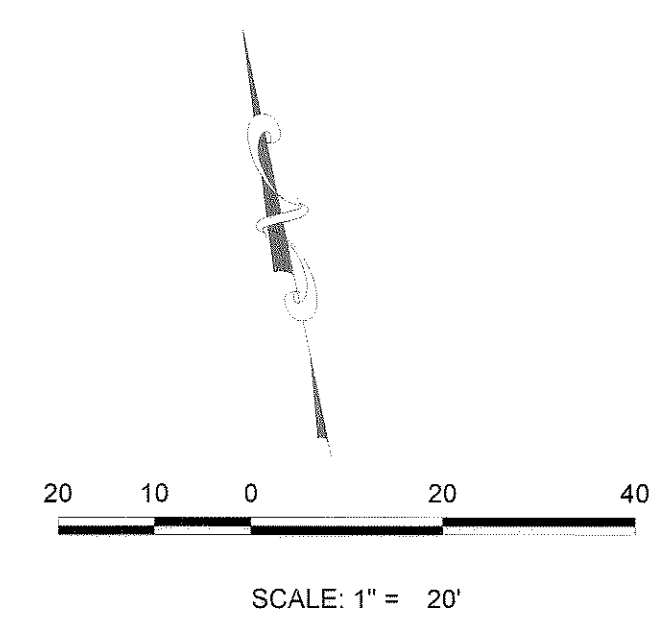
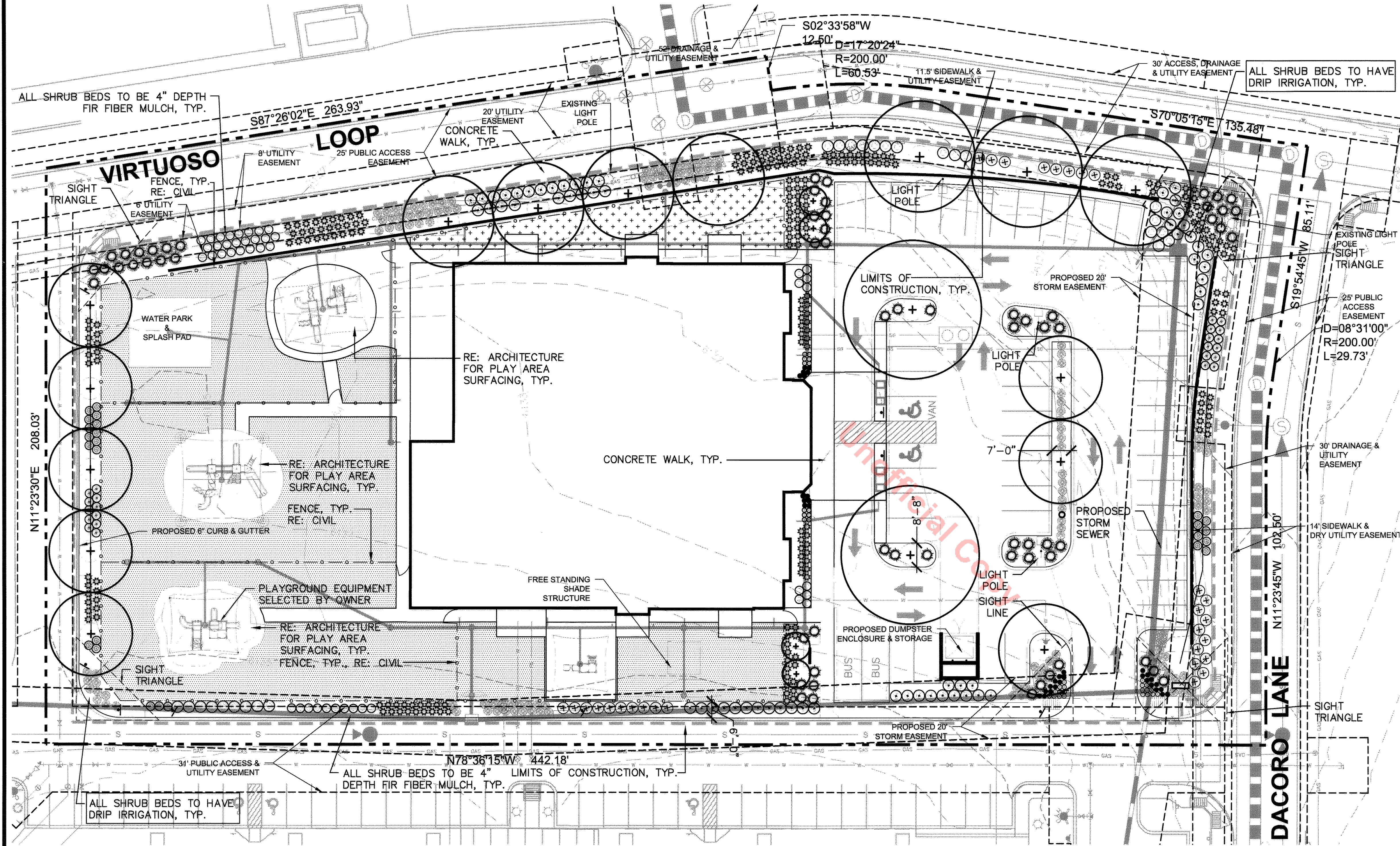
- EXISTING FIRE HYDRANT
- PROPOSED FIRE HYDRANT
- EXISTING/PHASE 1 WATER LINE
- PROPOSED WATER LINE
- EXISTING VALVE
- PROPOSED VALVE
- PROPOSED CURB STOP
- PROPOSED REDUCER
- PROPOSED WATER METER
- EXISTING MANHOLE
- EXISTING INLET
- EXISTING SANITARY LINE
- PROPOSED SANITARY LINE
- EXISTING STORM DRAINAGE PIPE
- EXISTING LIGHT
- PROPOSED LIGHTS
- EXISTING RIGHT OF WAY
- PROPOSED PROPERTY LINE
- PROPOSED ACCESS EASEMENT (P.A.E.)
- EXISTING ELECTRIC LINE
- EXISTING CABLE TELEVISION LINE
- EXISTING GAS LINE
- EXISTING LIGHT POLE
- P.A.E.
- P.A.U.E.

- ### UTILITY NOTES
1. ALL PROPOSED EASEMENTS MUST BE RECORDED PRIOR TO ISSUANCE OF CONSTRUCTION PERMITS.
 2. THE MINIMUM SEPARATION BETWEEN WATER LINES, SANITARY SEWER AND STORM LINES IS 10- FEET.
 3. THE MINIMUM SEPARATION BETWEEN WATER SERVICE LINES IS 5- FEET.
 4. THE SITE IS LOCATED WITHIN THE TOWN OF CASTLE ROCK "YELLOW" WATER PRESSURE ZONE.

 C2C ENGINEERING, LLC 6551 S. Revere Parkway, Suite 80111 Centennial, CO 80111 303.720.2214-4520 www.c2ceng.com		 Kids R Kids INTERNATIONAL 1628 Executive Drive South Duluth, GA 30099
DRAWN BY: KAL	SCALE: AS SHOWN	SHEET NUMBER: 4 OF 10
CHECKED BY: KAL	FILE NO: 13-01030	
DATE: NOVEMBER 8, 2013		
KIDS R KIDS LEARNING ACADEMIES THE MEADOWS, CASTLE ROCK, COLORADO UTILITY PLAN		PROJECT NO. SDP 13-0017
KIDS R KIDS LEARNING ACADEMIES THE MEADOWS, CASTLE ROCK, COLORADO UTILITY PLAN		PROJECT NO. SDP 13-0017

SITE DEVELOPMENT PLAN

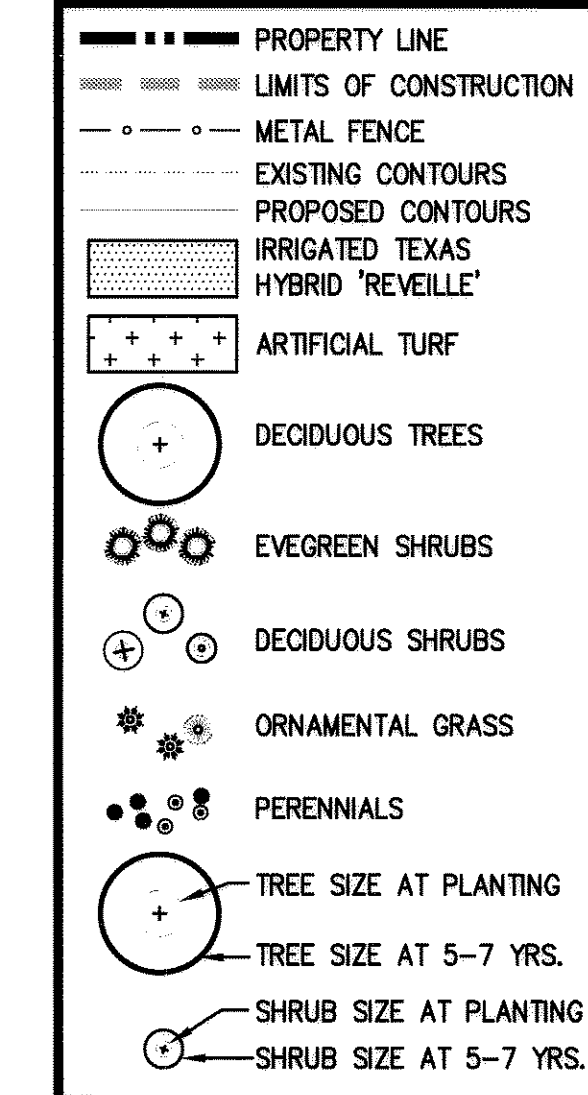
A PORTION OF LOT 6 REMAINDER, THE MEADOWS FILING NO. 17, AREA NO. 4, AMENDMENT NO. 3
TOWN OF CASTLE ROCK, COUNTY OF DOUGLAS, STATE OF COLORADO



CONCEPTUAL LANDSCAPE PLAN STANDARD NOTES:

- Square footages are estimated. Final landscape area coverages shall meet or exceed coverages represented in this drawing and shall conform to subsequent submittal requirements.
- Quantities and locations of plant materials are approximated. Final quantities and locations will be reflected on construction documents.
- All plants are to be properly hydrozoned per Town of Castle Rock Plant List.
- Distance of trees to utility lines should be a minimum of 10 feet.
- Permanent irrigation is required for all landscaped areas greater than 500 feet, per Section 4.2.3 of the Landscape and Irrigation Manual.
- Design must accommodate the watering restrictions as outlined in the Town of Castle Rock Water Use Management Plan (WUMP).
- Irrigation systems are to be designed to operate within the Town of Castle Rock Water Use Management Plan.
- Irrigation systems are to be designed per the Town of Castle Rock Landscape and Irrigation regulations Section 4.2.3 and to correlate with the use type on the property.
- After the initial installation of the landscaping plan as set forth on this Site Development Plan (and as further defined in the approved Landscaping Construction Drawings) the owner(s) of the Private O.S. tracts may, at owner's full discretion, replace dead or dying plants with similar plants but not necessarily the same species of plant without obtaining Town of Castle Rock approval for the replacement of such plantings. For example, a dead or dying deciduous tree/shrub can be replaced with a deciduous tree/shrub of a different species.

LEGEND




LANDSCAPE SUMMARY TABLE:

GROSS SITE AREA:	102,192 SQ.FT.
IRRIGATED LANDSCAPE:	27,360 SQ.FT. (27%)
IRRIGATED TURF:	14,500 SQ.FT. (14%)
LIVING GROUND COVER:	27,360 SQ.FT. (27%)
NON-IRRIGATED LANDSCAPE:	0 SQ.FT. (0%)
NON-LIVING GROUND COVER:	0 SQ.FT. (0%)
NON-DISTURBED AREAS:	0 SQ.FT. (0%)
LANDSCAPE AREA (TOTAL):	27,360 SQ.FT.
PARKING LOT AREA:	22,859 SQ.FT.
PARKING LOT LANDSCAPE AREA:	2,300 SQ.FT.
NUMBER OF SPACES:	49
NUMBER OF INTERIOR ISLANDS:	3
TREES:	5
SHRUBS:	35

<p>Kids R Kids INTERNATIONAL 1625 Executive Drive South Duluth, GA 30095</p>	<p>Revisions</p> <table border="1" style="width: 100%; border-collapse: collapse;"> <tr> <th>No.</th> <th>Date</th> <th>Init.</th> <th>Appr.</th> <th>Date</th> </tr> <tr> <td> </td> <td> </td> <td> </td> <td> </td> <td> </td> </tr> </table>	No.	Date	Init.	Appr.	Date					
No.	Date	Init.	Appr.	Date							
<p>KIDS R KIDS LEARNING ACADEMIES THE MEADOWS, CASTLE ROCK, COLORADO LANDSCAPE PLAN</p>	<p>SCALE: AS SHOWN DRAWN BY: KAL CHECKED BY: KAL DATE: NOVEMBER 4, 2013</p>										
	<p>FILE NO: 13-01030</p>										
<p>DHM DESIGN</p> <p>REGISTERED LANDSCAPE ARCHITECT: COLORADO LICENSE #175 Bill Neumann, TOCR CERTIFICATION # 8009</p>	<p>SHEET NUMBER 5 OF 10</p>										
<p>LOT 6E-2, THE MEADOWS FILING NO. 17, AREA 4, AMENDMENT NO. 7 PROJECT NO. SDP 13-0017</p>											

SITE DEVELOPMENT PLAN

A PORTION OF LOT 6 REMAINDER, THE MEADOWS FILING NO. 17, AREA NO. 4, AMENDMENT NO. 3
TOWN OF CASTLE ROCK, COUNTY OF DOUGLAS, STATE OF COLORADO

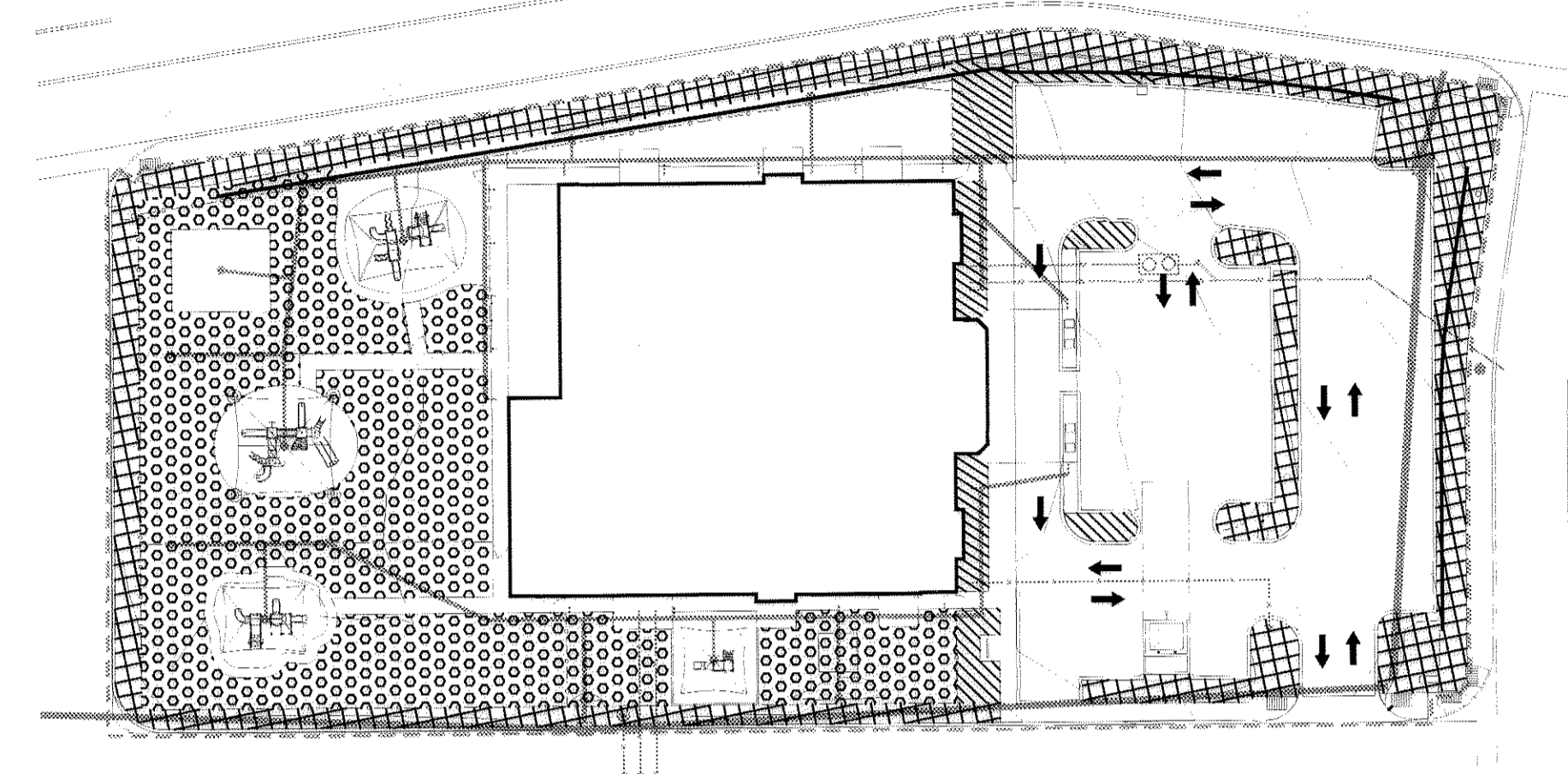


PLANT LIST

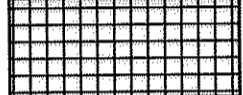


Registered Professional **Bill Neumann** Registration # **8009**
 Company Name **DHM Design Corp.** Address **1390 Lawrence St, Suite 100, Denver, CO 80204**
 Phone **303.892.5566** Email **bneumann@dhdmsdesign.com**

Irrigation Zone	Plant Name (scientific)	Plant Name (common)	Legend Abbrev.	Size	No. of Plants
DECIDUOUS TREES					
Low	<i>Fraxinus pennsylvanica</i> 'Patmore'	Patmore Ash		2-1/2" cal.	7
Low	<i>Gymnocladus dioica</i>	Kentucky Coffeetree		2-1/2" cal.	5
Low	<i>Gleditsia tracanthos inermis</i> var. 'Shademaster'	Shademaster Honey Locust		2-1/2" cal.	3
Low/Med./High	<i>Quercus macrocarpa</i>	Bur Oak		2-1/2" cal.	2
Med.	<i>Quercus robur</i> 'Fastigiata'	Columnar English Oak		2-1/2" cal.	4
EVERGREEN SHRUBS					
Low/Med.	<i>Juniperus squamata</i> 'Blue Star'	Blue Star Juniper		5 gal.	22
Low	<i>Juniperus horizontalis</i> 'Wiltonii'	Wilton Juniper		5 gal.	43
DECIDUOUS SHRUBS					
Low/Med.	<i>Caryopteris x clandonensis</i>	Bluemist Spirea		5 gal.	44
Low	<i>Physocarpus opulifolius</i> 'Dart's Gold'	Dart's Gold Ninebark		5 gal.	29
Very Low	<i>Chrysothamnus nauseosus</i> subsp. <i>nauseosus</i>	Dwarf Blue Rabbitbrush		5 gal.	49
Low/Very Low	<i>Perovskia atriplicifolia</i>	Russian Sage		5 gal.	25
Low/Very Low	<i>Rhus trilobata</i>	Threeleaf Sumac		5 gal.	12
Low	<i>Potentilla fruticosa</i> 'McKays White'	White Potentilla		5 gal.	23
Low	<i>Rosa</i> 'Knockout'	Red Knockout Shrub Rose		5 gal.	25
ORNAMENTAL GRASSES					
Low/Very Low	<i>Schizachyrium scoparium</i>	Little Bluestem		1 gal.	81
Low/Med.	<i>Helictotichon sempervirens</i>	Blue Avena		1 gal.	123
Med./High	<i>Calamagrostis x acutiflora</i> 'Karl Foerster'	Feather Reed Grass		1 gal.	89
Low	<i>Panicum virgatum</i> 'Rehbraun'	Switch Grass		1 gal.	95
PERENNIALS/ GROUND COVER					
Med.	<i>Coreopsis verticillata</i> 'Zagreb'	Zagreb Coreopsis		1 gal.	12
Low	<i>Gallardia aristata</i>	Blanket Flower		1 gal.	20
Med./Low	<i>Echinacea purpurea</i> 'Kim's Knee High'	Purple Coneflower		1 gal.	22
Med.	<i>Leucanthemum compact</i> 'Snow Lady'	Dwarf Shasta Daisy		1 gal.	12

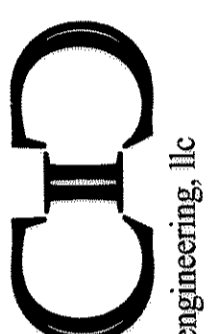

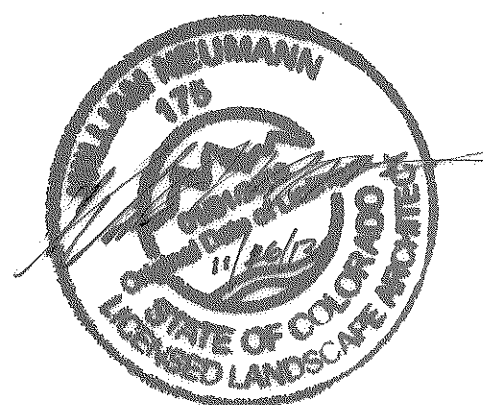
HYDROZONE PLAN



HYDROZONE LEGEND

-  LOW - 10,200 S.F. - DRIP IRRIGATION
-  MODERATE - 2,660 S.F. - DRIP IRRIGATION
-  HIGH - 14,500 S.F. - SPRAY IRRIGATION

Unofficial Copy

 C2C Engineering, LLC 6651 S Central, Colorado 80111 P: 720-271-4620 www.c2ceng.com	 KIDS R KIDS INTERNATIONAL 1625 Executive Drive South Duluth, GA 30096	KIDS R KIDS LEARNING ACADEMIES THE MEADOWS, CASTLE ROCK, COLORADO LANDSCAPE DETAILS	SCALE: AS SHOWN FILE NO: 13-01030	DRAWN BY: KAL CHECKED BY: KAL DATE: NOVEMBER 4, 2013		SHEET NUMBER 6 OF 10	REGISTERED LANDSCAPE ARCHITECT: Bill Neumann, TOCR CERTIFICATION # 8009
				COLORADO LICENSE #175 STATE OF COLORADO LICENSED LANDSCAPE ARCHITECT			
				DHM DESIGN			
				REGISTERED LANDSCAPE ARCHITECT: COLORADO LICENSE #175 Bill Neumann, TOCR CERTIFICATION # 8009			
				PROJECT NO. SDP 13-0017			

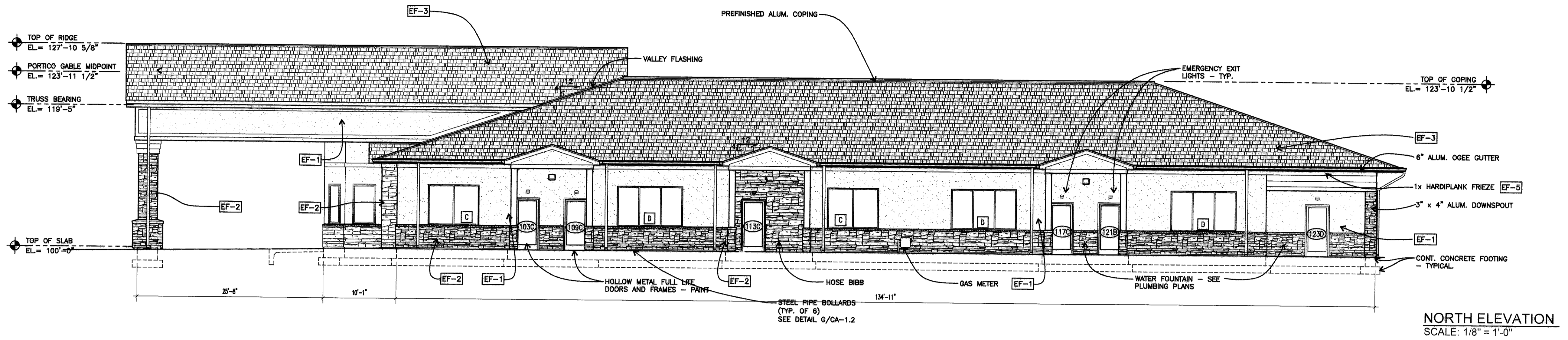


DHM DESIGN

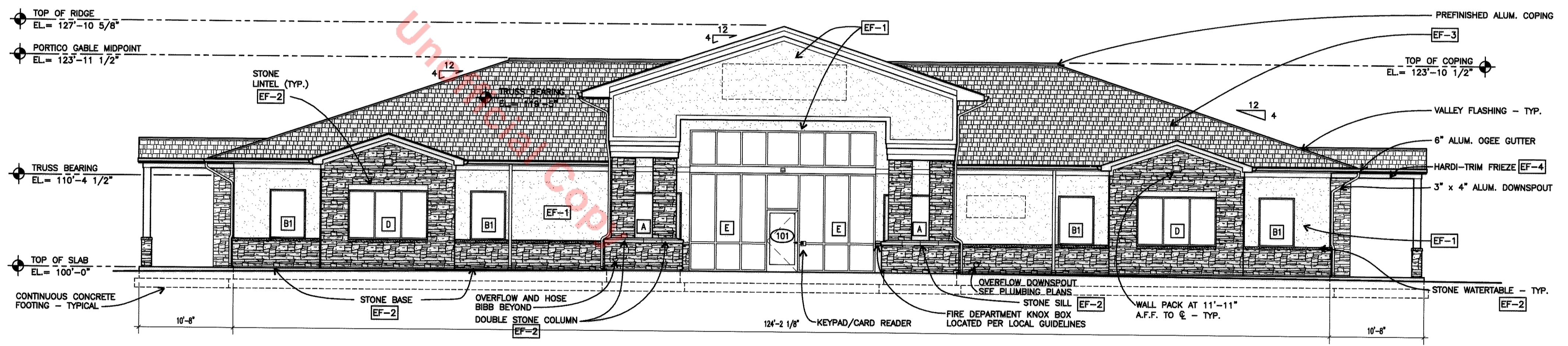
LOT 6E-2, THE MEADOWS FILING NO. 17,
AREA 4, AMENDMENT NO. 7
PROJECT NO. SDP 13-0017

SITE DEVELOPMENT PLAN

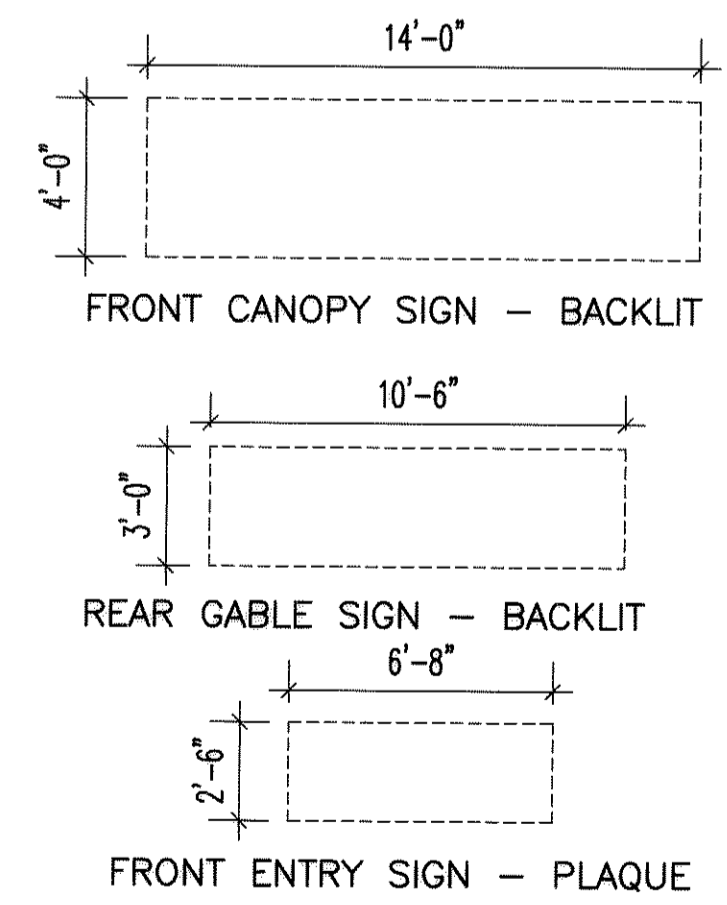
A PORTION OF LOT 6 REMAINDER, THE MEADOWS FILING NO. 17, AREA NO. 4, AMENDMENT NO. 3
TOWN OF CASTLE ROCK, COUNTY OF DOUGLAS, STATE OF COLORADO



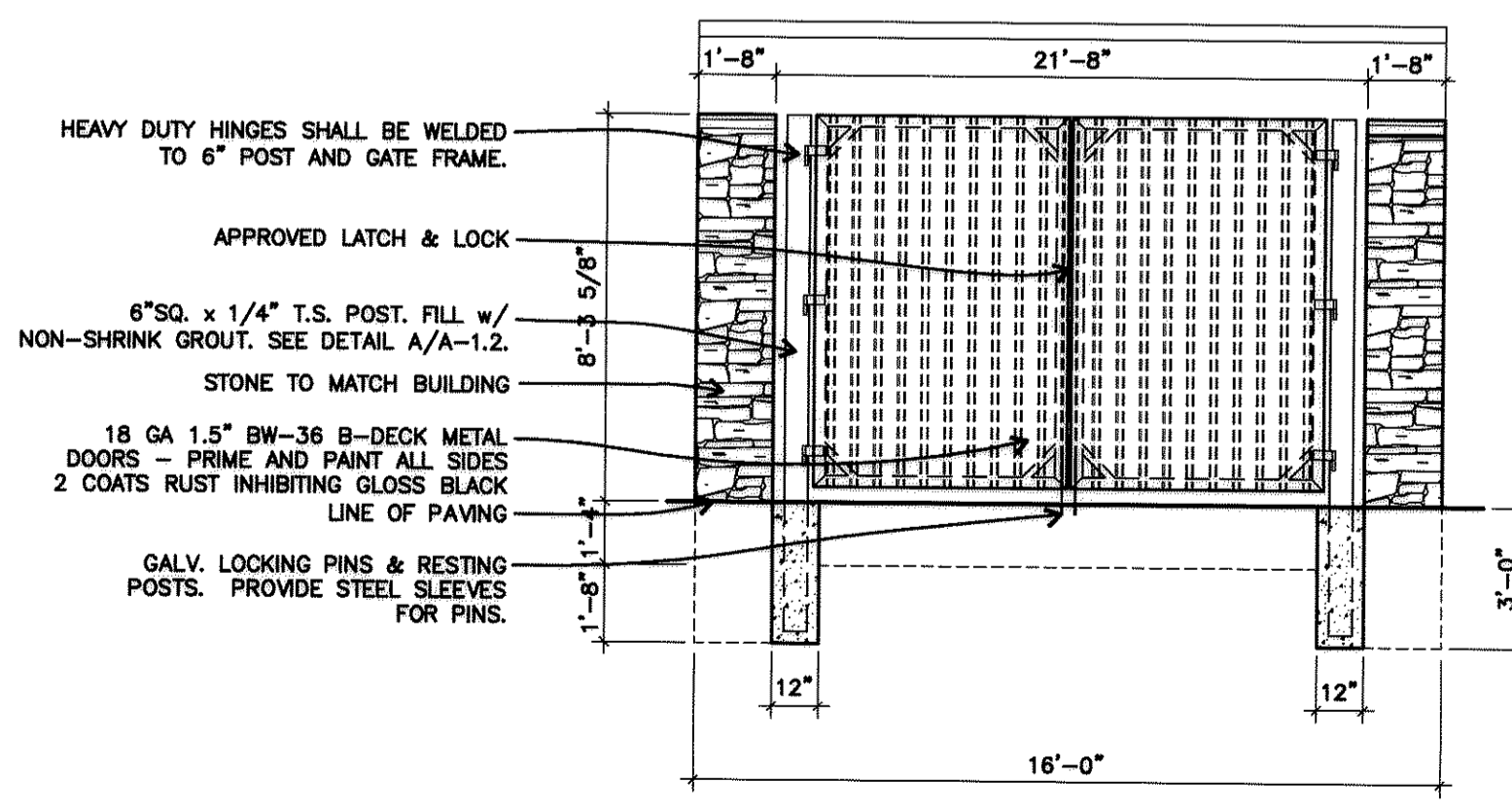
NORTH ELEVATION
SCALE: 1/8" = 1'-0"



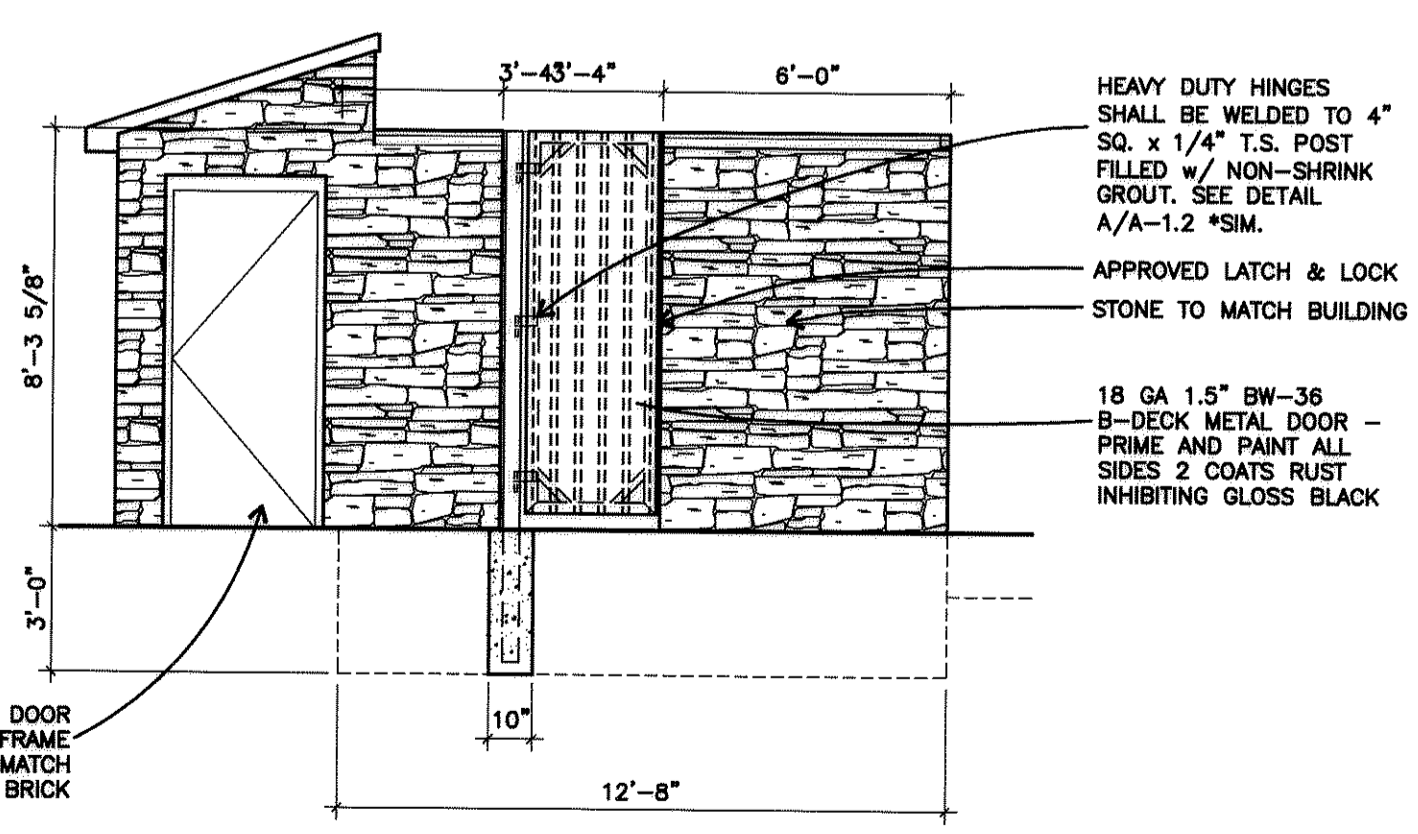
EAST ELEVATION
SCALE: 1/8" = 1'-0"



BUILDING MOUNTED SIGNAGE SUMMARY
SCALE: NTS



B TRASH ENCLOSURE FRONT ELEVATION
SCALE: 1/4" = 1'-0"



A TRASH ENCLOSURE SIDE ELEVATION
SCALE: 1/4" = 1'-0"

EXTERIOR MATERIAL & FINISH SCHEDULE		
EF-1	STUCCO	DRYVIT STUCCO COLOR- CANVAS 443A
EF-2	STONE	SUNSET STONE, CULTURED STONE - LEDGESTONE, COLOR: CHEYENNE
EF-3	ROOF SHINGLES	DIMENSIONAL SHINGLES- 30 YR. LTD. WARRANTY - CERTAINTED "LANDMARK SOLARIS" - DUSKY CLAY
EF-4	PAINT	PAINT FOR ROOF CAPS AND VENT PIPES TO MATCH SHINGLE COLOR
EF-5	HARDPLANK TRIM	SHERWIN WILLIAMS SW7537 IRISH CREAM

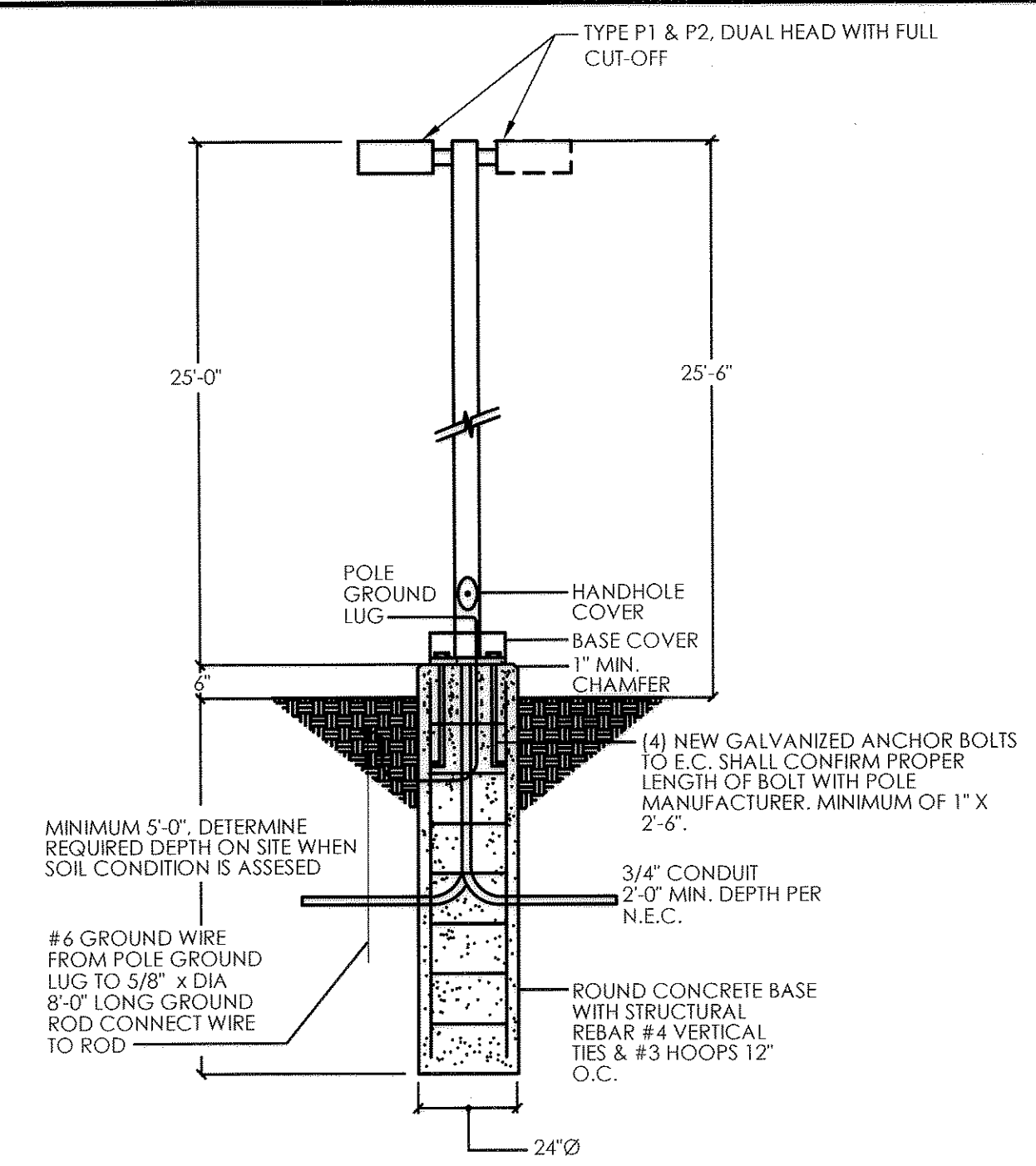
NOTE:
ANY EXTERNAL ELECTRICAL PANELS WILL BE PAINTED/TEXTURED TO MATCH THE MATERIAL AND COLOR OF THE BUILDING

LOT 6E-2, THE MEADOWS FILING NO. 17,
AREA 4, AMENDMENT NO. 7
PROJECT NO. SDP 13-01017

 C2C ENGINEERING, LLC 6551 S. Revere Parkway, Suite 140 Centennial, Colorado 80111 www.c2ceng.com	 KIDS R KIDS INTERNATIONAL 1626 Excelsior Drive South Durbin, GA 30295	KIDS R KIDS LEARNING ACADEMIES THE MEADOWS, CASTLE ROCK, COLORADO EXTERIOR ELEVATIONS	SCALE: AS SHOWN FILE NO: 13-01030	DRAWN BY: KAL CHECKED BY: KAL DATE: JULY 10, 2013	SHEET NUMBER 7 OF 10	Revisions No.	Date Init. Appr. Date

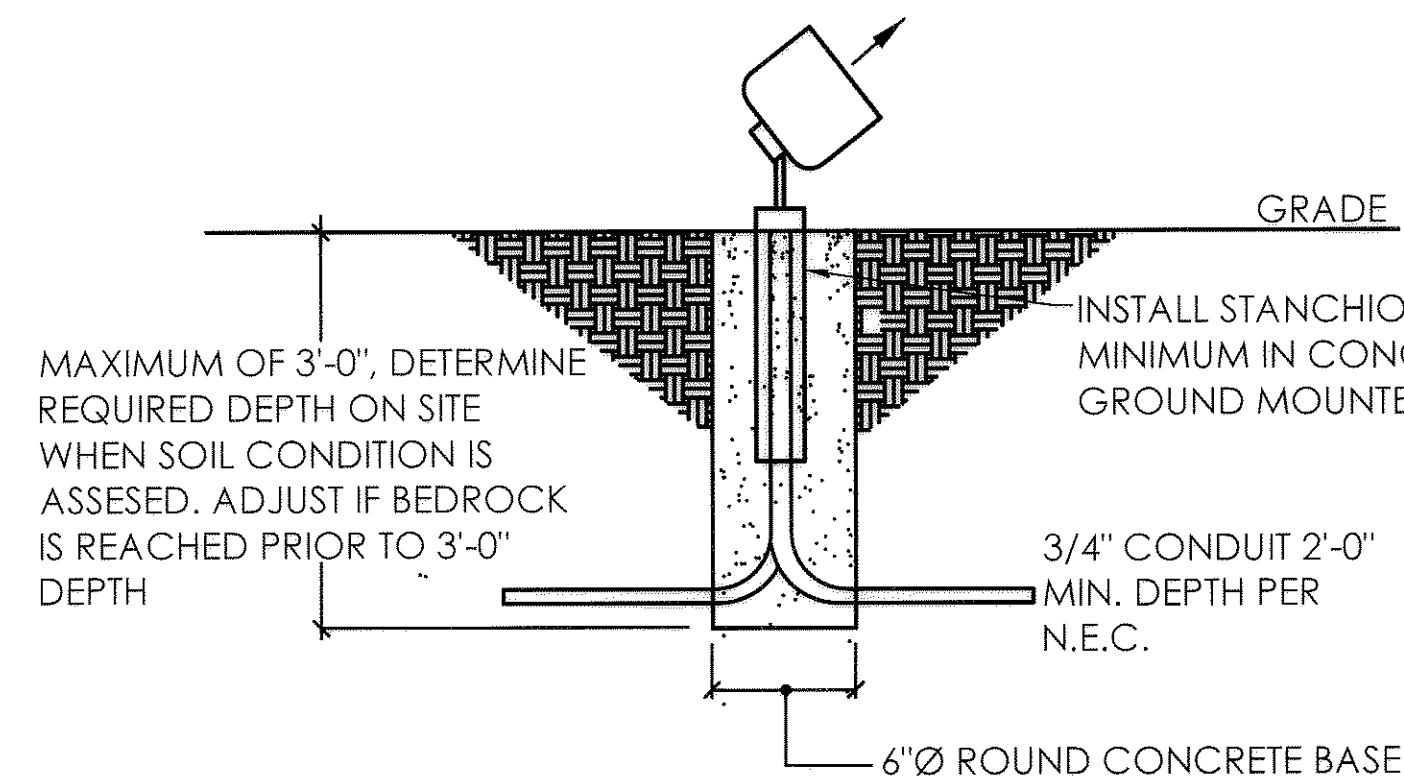
SITE DEVELOPMENT PLAN

LOT 6E-2, THE MEADOWS FILING NO. 17, AREA NO. 4, AMENDMENT NO. 7
TOWN OF CASTLE ROCK, COUNTY OF DOUGLAS, STATE OF COLORADO



B POLE BASE DETAIL
N.T.S.

- OBJECTIVE FOR LIGHTING IN DIFFERENT AREAS OF THE SITE
 - POLE LIGHTS P1 & P2 TO ILLUMINATE PARKING SURFACES.
 - CANOPY LIGHTING TO ILLUMINATE DRIVE UP.
 - BUILDING LIGHTING TO ILLUMINATE DOOR ENTRANCES AND BUILDING PERIMETER.
- HOURS OF LIGHT OPERATION
 - DUSK TO DAWN
- MITIGATION TO NEIGHBORHOODS/ADJACENT PROPERTIES.
 - PER REVISED PHOTOMETRICS MAXIMUM LIGHTING LEVEL IS .3 FC 10' PAST PROPERTY LINE.
- THE FOLLOWING LIGHTING TYPES ARE PROHIBITED. FORWARD THROW (TYPE IV)
 - DISTRIBUTION, POLE MOUNTED LIGHTS AIMED AT THE BUILDING'S FACADE, UNSHIELDED WALL PACKS.
 - ALL FIXTURES ARE FULL CUT-OFF PLEASE SEE UPDATED CUT SHEETS



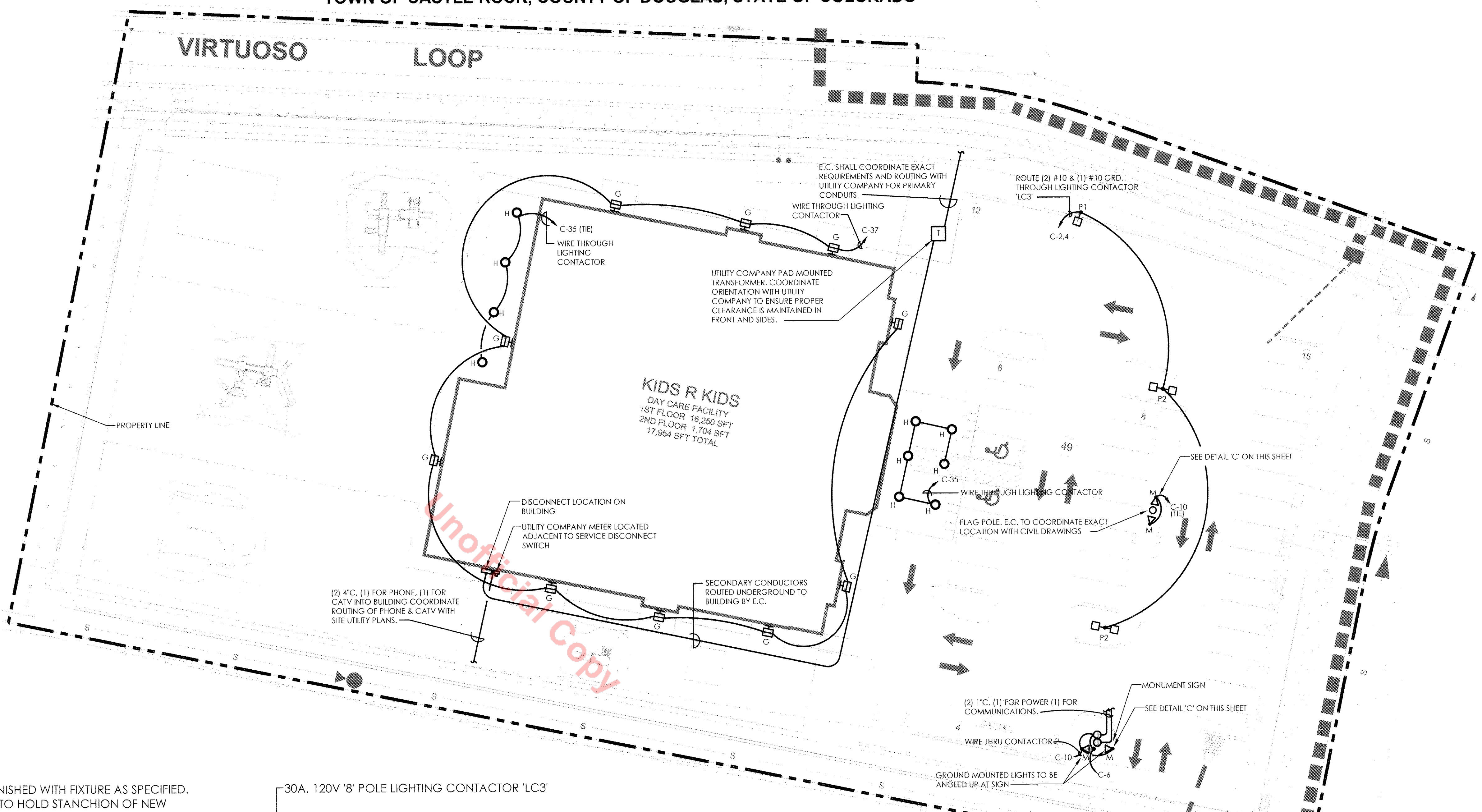
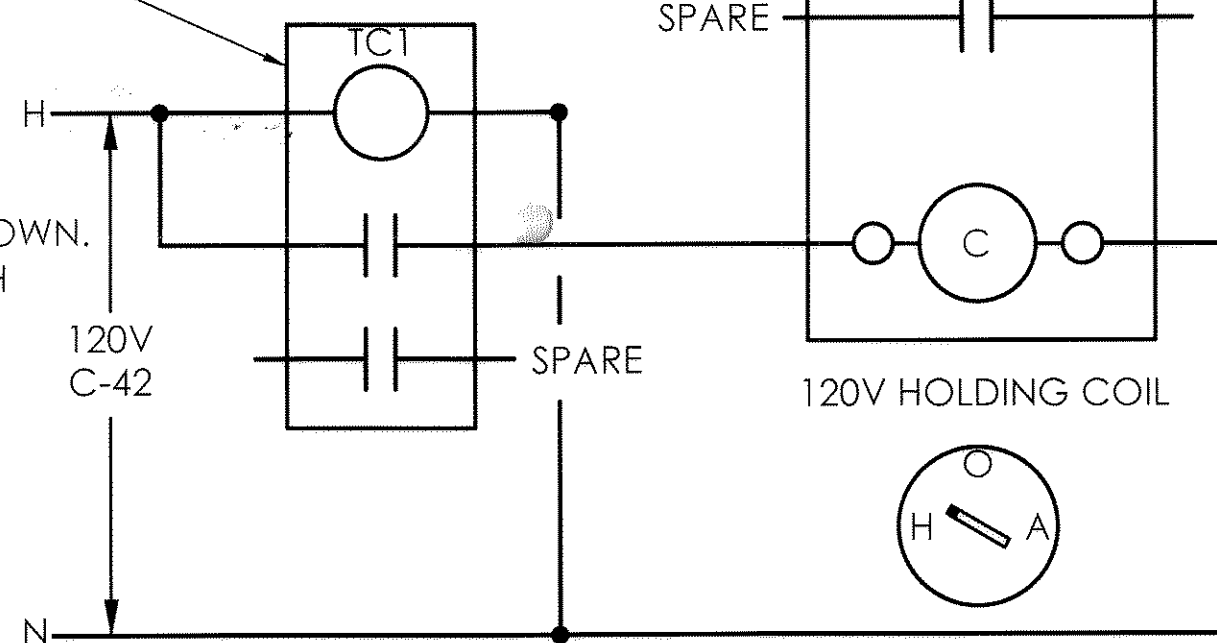
C GROUND MOUNTED FLOOD LIGHT
N.T.S.

2-CHANNEL DIGITAL TIMECLOCK, TC1, TORK MODEL DWZ201 OR EQUAL WITH OVERRIDE CONTROL EITHER INTEGRAL TO UNIT OR EXTERNAL WITH SINGLE POLE SWITCH LABELED 'OVERRIDE FOR LIGHTING CONTROL'

LIGHTING CONTROL WIRING NOTES:

- E.C. TO FURNISH AND INSTALL LIGHTING CONTACTOR AND TIMECLOCKS AS SHOWN. CONTACTORS SHALL BE ELECTRICALLY HELD, ELECTRICALLY CONTROLLED, WITH FIELD REVERSIBLE NORMALLY OPEN/CLOSED CONTACTS RATED FOR 30A, 250V. PROVIDE HAND-OFF-AUTO SELECTOR SWITCH.
- E.C. SHALL PROGRAM FROM DUSK TO DAWN OPERATION.

D LIGHTING CONTACTOR WIRING DIAGRAM
N.T.S.



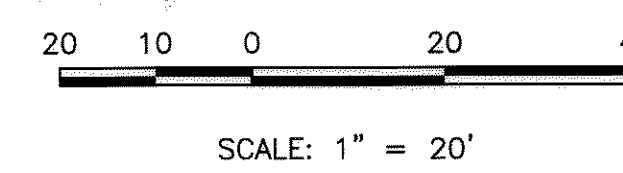
A GENERAL LIGHTING PLAN
SCALE: 1"=20'-0"

BUILDING LIGHT FIXTURE SCHEDULE

TYPE	DESCRIPTION	LAMPS	BALLAST	LUMENS	VOLTAGE
G	METAL HALIDE WALLPACK WITH LAMP. LITHONIA CAT # TWF1-70M-120	(1) 70W METAL HALIDE	MAG	5500	120
H	8\"/>				

PARKING LOT LIGHT FIXTURE SCHEDULE

FIXTURE ID	DESCRIPTION	LAMP TYPE	LAMP QTY	VOLTAGE	LUMENS	ADDITIONAL INFORMATION
P1	RECTANGULAR SHOE BOX, CUT-OFF SINGLE HEAD, POLE MOUNTED FIXTURE - LITHONIA CAT# KSF2-250M-R4SC-TB-SP-04-LPI POLE (25') - LITHONIA CAT# SSS-25-4G-DM29-DOB	250W METAL HALIDE	1	208	22500	FIXTURE SPECIFIED AS DARK BRONZE. COORDINATE EXACT COLOR WITH ARCHITECT PRIOR TO ORDERING
P2	RECTANGULAR SHOE BOX, CUT-OFF DOUBLE HEADS, POLE MOUNTED FIXTURE - LITHONIA CAT# KSF2-250M-R4CS-TB-SP-04-LPI POLE (25') - LITHONIA CAT# SSS-25-4G-DM28-DOB	250W METAL HALIDE	2	208	22500	FIXTURE SPECIFIED AS DARK BRONZE. COORDINATE EXACT COLOR WITH ARCHITECT PRIOR TO ORDERING



NO.	REVISIONS	DATE	INIT.	APPR.	DATE
C2C Engineering, LLC 6505 S. Revere Parkway, Suite 140 Centennial, Colorado 80111 P: 720-221-1450 www.c2ceng.com					
C2C Engineering, LLC CIVIL ENGINEERING • WATER RESOURCES • LAND PLANNING					
Kids R Kids INTERNATIONAL 1625 Executive Drive South Duluth, GA 30096					
KIDS R KIDS LEARNING ACADEMIES THE MEADOWS, CASTLE ROCK, COLORADO GENERAL LIGHTING PLAN					
SCALE:	AS SHOWN	FILE NO:	13-01030		
DRAWN BY:	KAL	CHECKED BY:	KAL	DATE:	OCTOBER 8, 2013
SHEET NUMBER					
10 OF 10					

LOT 6E-2, THE MEADOWS FILING NO. 17, AREA 4, AMENDMENT NO. 7
PROJECT NO. SDP 13-0017