

OFFICIAL RECORDS
DOUGLAS COUNTY CO
CAROLE R. MURRAY
CLERK & RECORDER
RECORDING FEE: \$21.00
3 PGS
2004057704
06/04/2004 01:25 PM



PLAT IDENTIFICATION SHEET

✓ GRANTOR: Capital Pacific Holding, LLC
(OWNER)

✓ GRANTEE: The Meadows Filing 12 1st PD Minor
Amendment
(NAME OF PLAT)

✓ OLD LEGAL:

Section: 32 / 5

Township: 7 / 8

Range: 67 / 67

NEW LEGAL:

Subdivision/Condo Name: The Meadows

Filing # 12

Phase

Lot #

Building #

Block #

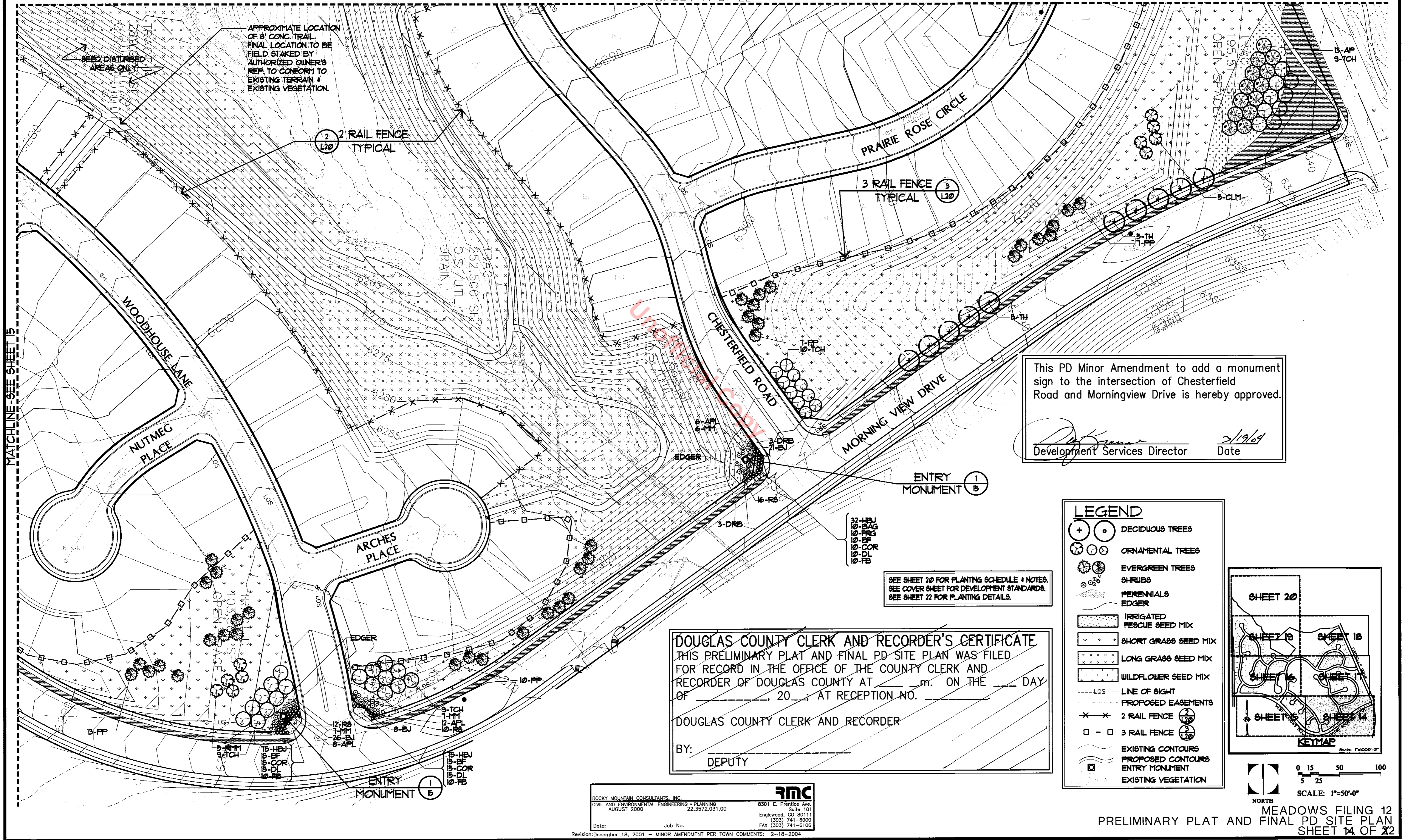
Unit #

MEADOWS FILING NO. 12

A PARCEL OF LAND LOCATED IN THE SOUTH HALF OF SECTION 32,
TOWNSHIP 7 SOUTH, RANGE 67 WEST OF THE SIXTH PRINCIPAL MERIDIAN,
AND THE NORTH HALF OF SECTION 5, TOWNSHIP 8 SOUTH, RANGE 67 WEST OF THE SIXTH PRINCIPAL MERIDIAN,
TOWN OF CASTLE ROCK, COUNTY OF DOUGLAS, STATE OF COLORADO
PRELIMINARY PLAT AND FINAL PD SITE PLAN

SHEET 14 OF 22

MATCHLINE-SEE SHEET 17



This PD Minor Amendment to add a monument sign to the intersection of Chesterfield Road and Morningview Drive is hereby approved.

[Signature]
Development Services Director 2/19/04
Date

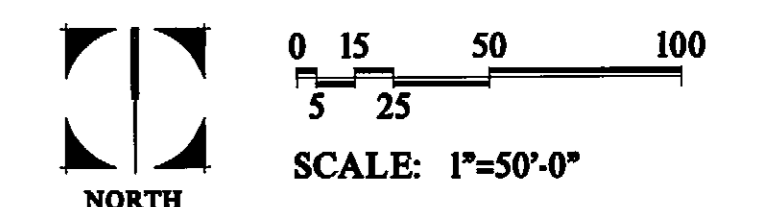
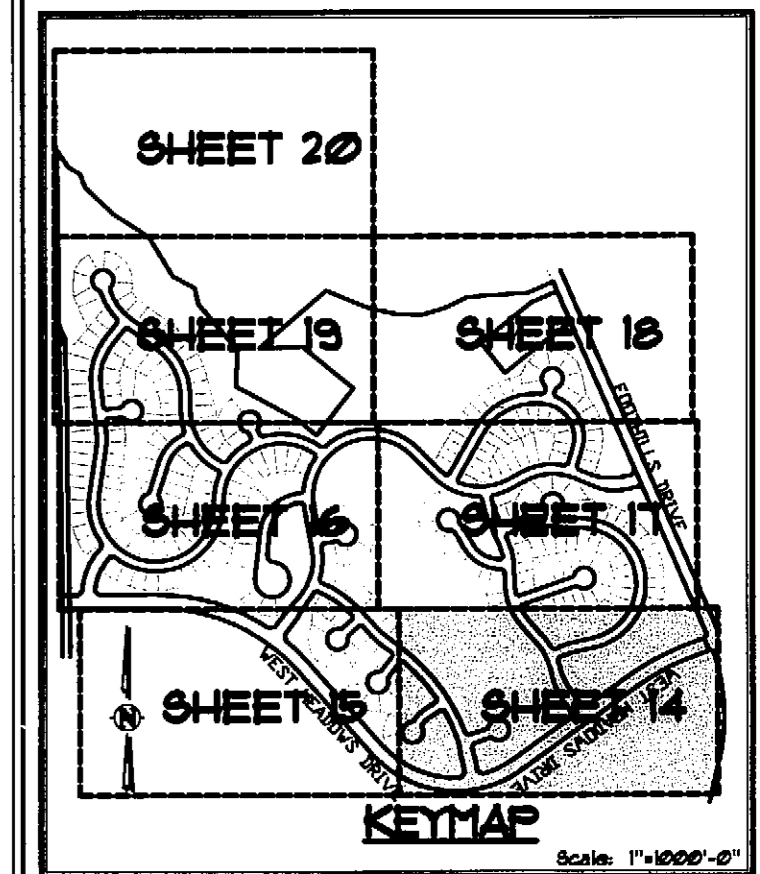
SEE SHEET 20 FOR PLANTING SCHEDULE & NOTES.
SEE COVER SHEET FOR DEVELOPMENT STANDARDS.
SEE SHEET 22 FOR PLANTING DETAILS.

DOUGLAS COUNTY CLERK AND RECORDER'S CERTIFICATE.
THIS PRELIMINARY PLAT AND FINAL PD SITE PLAN WAS FILED FOR RECORD IN THE OFFICE OF THE COUNTY CLERK AND RECORDER OF DOUGLAS COUNTY AT _____ m. ON THE _____ DAY OF _____, 20____; AT RECEPTION NO. _____

DOUGLAS COUNTY CLERK AND RECORDER
BY: _____
DEPUTY

LEGEND

- (+ ○) DECIDUOUS TREES
- (○ ○) ORNAMENTAL TREES
- (● ●) EVERGREEN TREES
- (● ●) SHRUBS
- (● ●) PERENNIALS
- (—) EDGER
- (■ ■) IRRIGATED FESCUE SEED MIX
- (■ ■) SHORT GRASS SEED MIX
- (■ ■) LONG GRASS SEED MIX
- (■ ■) WILDFLOWER SEED MIX
- (---) LINE OF SIGHT
- (---) PROPOSED EASEMENTS
- (x x) 2 RAIL FENCE (2)
- (x x) 3 RAIL FENCE (3)
- (□ □) EXISTING CONTOURS
- (□ □) PROPOSED CONTOURS
- (□ □) ENTRY MONUMENT
- (□ □) EXISTING VEGETATION



ROCKY MOUNTAIN CONSULTANTS, INC. **rmc**
CIVIL AND ENVIRONMENTAL ENGINEERING • PLANNING 8301 E. Prentice Ave., Suite 101
AUGUST 2000 22.3572.031.00 Englewood, CO 80111
Date: Job No. (303) 741-6000
FAX (303) 741-6106

MEADOWS FILING 12
PRELIMINARY PLAT AND FINAL PD SITE PLAN
SHEET 14 OF 22