

PLAT IDENTIFICATION SHEET

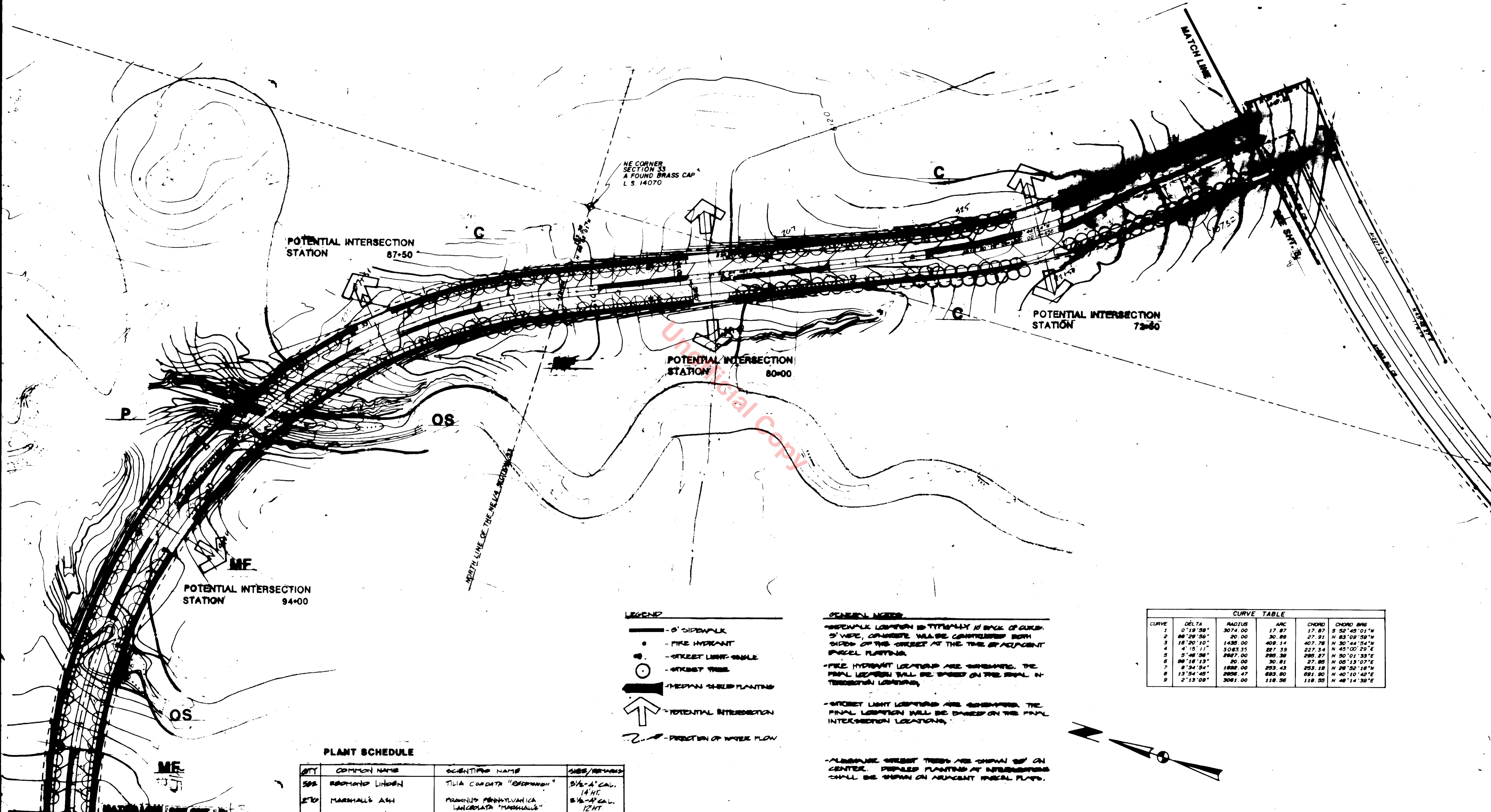
Reception #: 8721830

Number of pages: 8

Date: 07/24/87

Name: MEADOWS

MISCELLANEOUS COMMENTS:



NE CORNER SECTION 33
A FOUND BRASS CAP
L.S. 14070

POTENTIAL INTERSECTION STATION 87+50

POTENTIAL INTERSECTION STATION 72+60

POTENTIAL INTERSECTION STATION 80+00

POTENTIAL INTERSECTION STATION 94+00

- LEGEND**
- 5' SIDEWALK
 - FIRE HYDRANT
 - STREET LIGHT-DOUBLE
 - STREET TREE
 - MEDIAN GRASS PLANTING
 - ↑ POTENTIAL INTERSECTION
 - DIRECTION OF WATER FLOW

GENERAL NOTES

- SIDEWALK LOCATION IS TYPICALLY 10' BACK OF CURB. 5' WIDE, CONCRETE. WALLS CONTIGUOUS BOTH SIDES OF THE STREET AT THE TIME OF ADJACENT PAVEMENT PLANTING.
- FIRE HYDRANT LOCATIONS ARE SHOWN. THE FINAL LOCATIONS WILL BE BASED ON THE FINAL INTERSECTION LOCATIONS.
- STREET LIGHT LOCATIONS ARE SHOWN. THE FINAL LOCATIONS WILL BE BASED ON THE FINAL INTERSECTION LOCATIONS.
- ADJACENT STREET TREES ARE SHOWN ON CENTER. TREES PLANTED AT INTERSECTIONS SHALL BE SHOWN ON ADJACENT PAVEMENT PLANTS.

CURVE	DELTA	RADIUS	ARC	CHORD	CHORD BNG
1	0° 19' 59"	3074.00	17.87	17.87	S 52° 43' 01" W
2	08° 29' 59"	20.00	30.89	27.91	N 83° 09' 59" W
3	18° 20' 10"	1435.00	409.14	407.78	N 30° 44' 54" W
4	4° 15' 11"	3083.55	227.39	227.34	N 45° 00' 29" E
5	5° 46' 56"	2987.00	298.38	298.27	N 50° 01' 33" E
6	08° 18' 13"	20.00	30.81	27.85	N 05° 13' 07" E
7	8° 34' 54"	1888.00	253.43	253.18	N 28° 52' 18" W
8	13° 54' 46"	2695.47	333.00	331.80	N 40° 10' 42" E
9	2° 13' 09"	3061.00	118.95	118.55	N 48° 14' 39" E

PLANT SCHEDULE

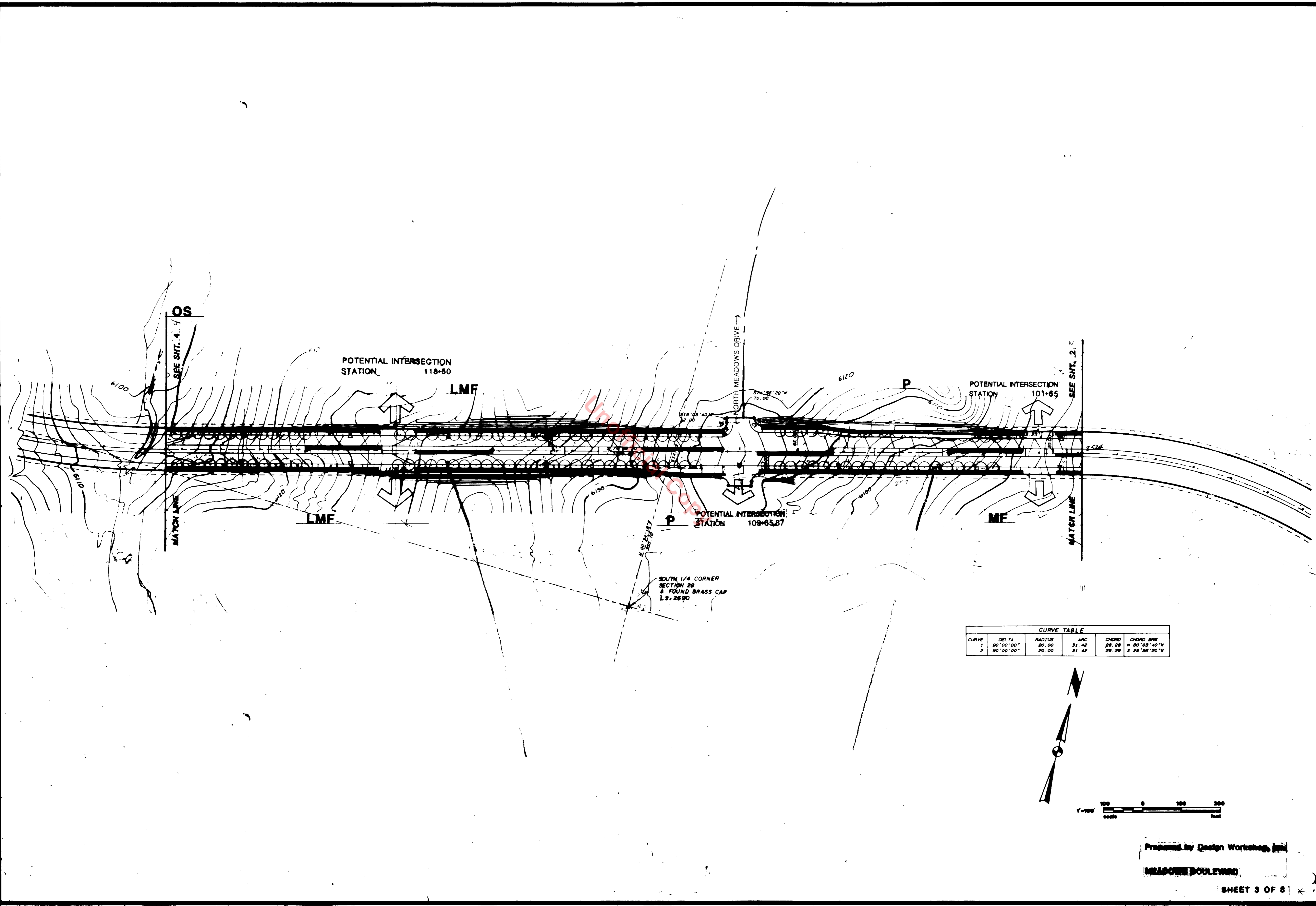
QTY	COMMON NAME	SCIENTIFIC NAME	SIZE/REMARKS
500	RED-TONED LINDEN	TILIA CORDATA "RED-TONED"	3 1/2" - 4" CAL. 14 FT.
270	MARSHALL'S ASH	FRAXINUS PENNSYLVANICA LANCEOLATA "MARSHALL'S"	3 1/2" - 4" CAL. 12 FT.
300	SPRING-SPIRE LINDEN	TILIA CORDATA "SPRING-SPIRE"	2 1/2" - 3" CAL. 14 FT.
300	COMMON HACKBERRY	CELTIS OCCIDENTALIS	2 1/2" - 3" CAL. 10 FT.
500	NORWAY MAPLE	ACER PLATANOIDES	3 1/2" - 4" CAL. 12 FT.



Prepared by Design Services, Inc.

MEASURES BOULEVARD

SHEET 2 OF 4



SEE SHT. 4 OS

POTENTIAL INTERSECTION STATION 118+50

LMF

NORTH MEADOWS DRIVE

6120

P

POTENTIAL INTERSECTION STATION 101+85

SEE SHT. 2

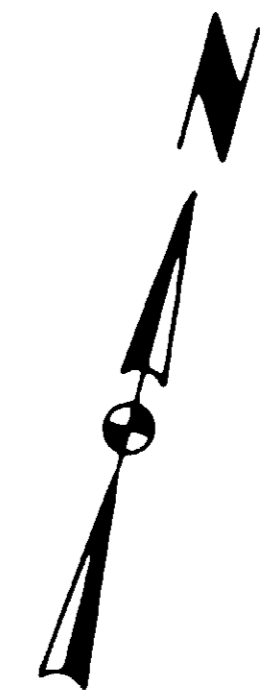
LMF

POTENTIAL INTERSECTION STATION 109+65.87

SOUTH 1/4 CORNER SECTION 28 A FOUND BRASS CAP L.S. 2690

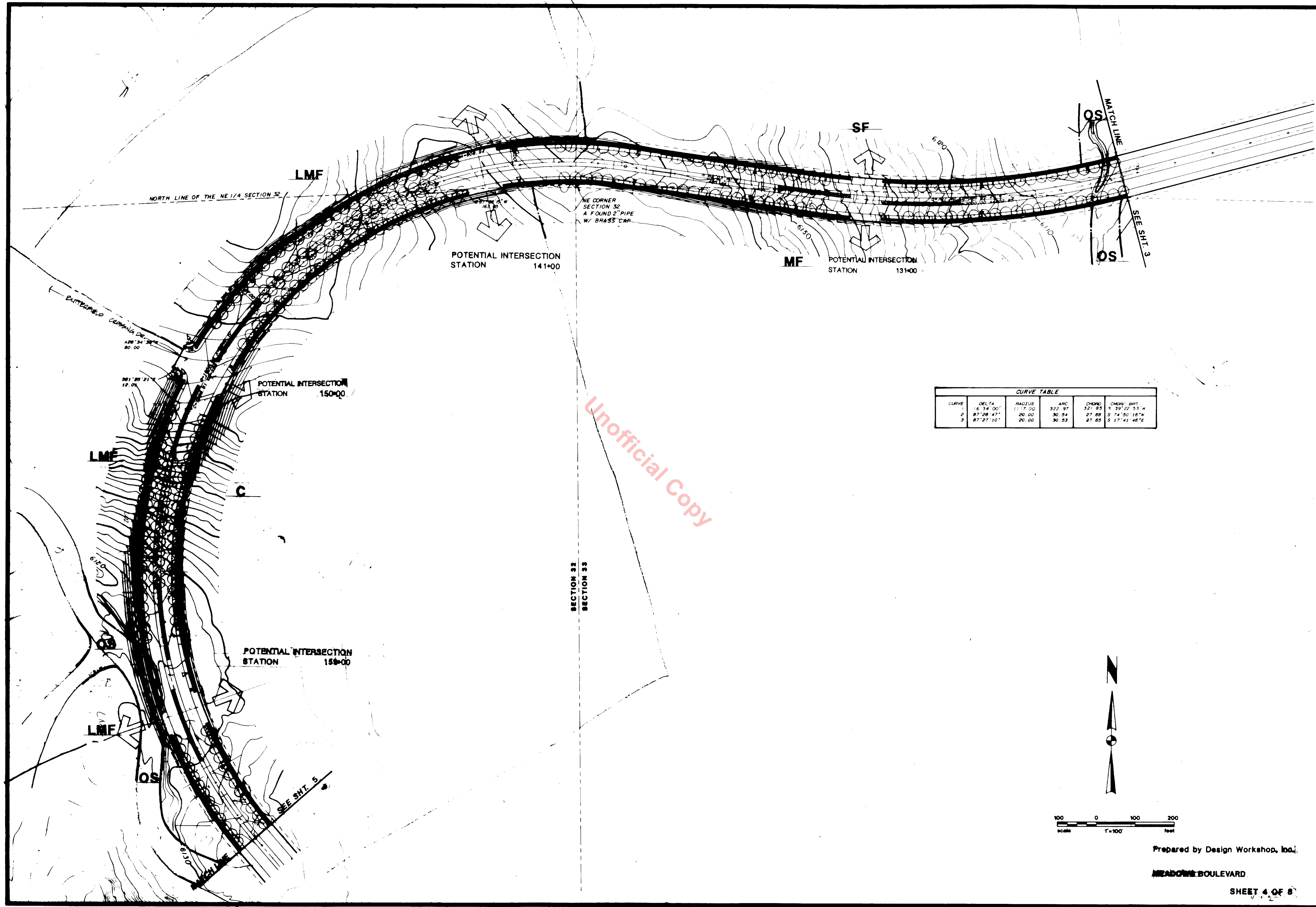
MF

CURVE TABLE					
CURVE	DELTA	RADIUS	ARC	CHORD	CHORD B'W
1	90° 00' 00"	20.00	31.42	28.28	N 80° 03' 40" W
2	90° 00' 00"	20.00	31.42	28.28	S 29° 56' 20" W



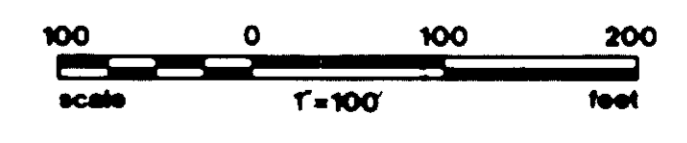
Prepared by Design Workshop, Inc.

MEADOWS BOULEVARD



Unofficial Copy

CURVE TABLE					
CURVE	DELTA	RADIUS	ARC	CHORD	CHORD BPC
1	16° 34' 00"	117.00	322.97	321.85	S 39° 22' 53" W
2	87° 28' 47"	20.00	30.34	27.86	S 74° 50' 16" W
3	87° 27' 10"	20.00	30.53	27.85	S 17° 41' 46" E



Prepared by Design Workshop, Inc.

MEADOWS BOULEVARD

SHEET 4 OF 8

EAST-WEST CENTERLINE SECTION 33

EAST LINE OF THE NE 1/4 SECTION 32

EAST-WEST CENTERLINE SECTION 32

MATCH LINE

SEE SHT. 8

POTENTIAL INTERSECTION STATION 181+00

POTENTIAL INTERSECTION STATION 180+00

Unofficial Copy

LMF

OS

OS

LMF



Prepared by Design Workshop, Inc.

MEADOWS BOULEVARD

SHEET 5 OF 8

SOUTH 1/4 CORNER
SECTION 33
A FOUND STONE

SEE SHEET 7

LSF

MATCH LINE

LMF

MACLINE ROAD
STATION 215+14.87

Unofficial Copy

SEE SHT. 5

P

MATCH LINE

LMF

POTENTIAL INTERSECTION
RELATION 18+00

LMF

POTENTIAL INTERSECTION
STATION 19+00

OS

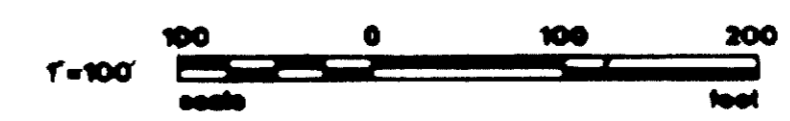
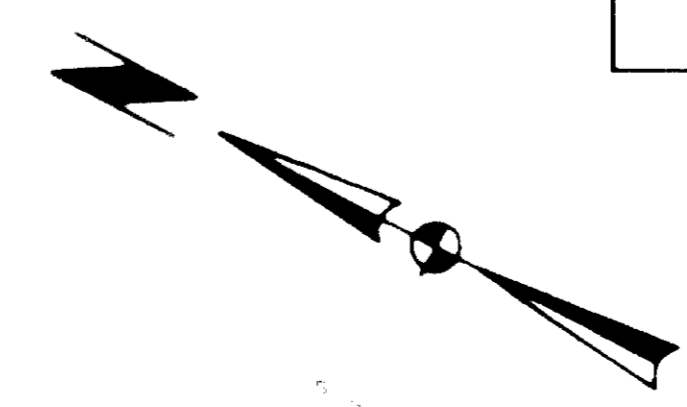
OS

OS

POTENTIAL INTERSECTION
STATION 20+00

LMF

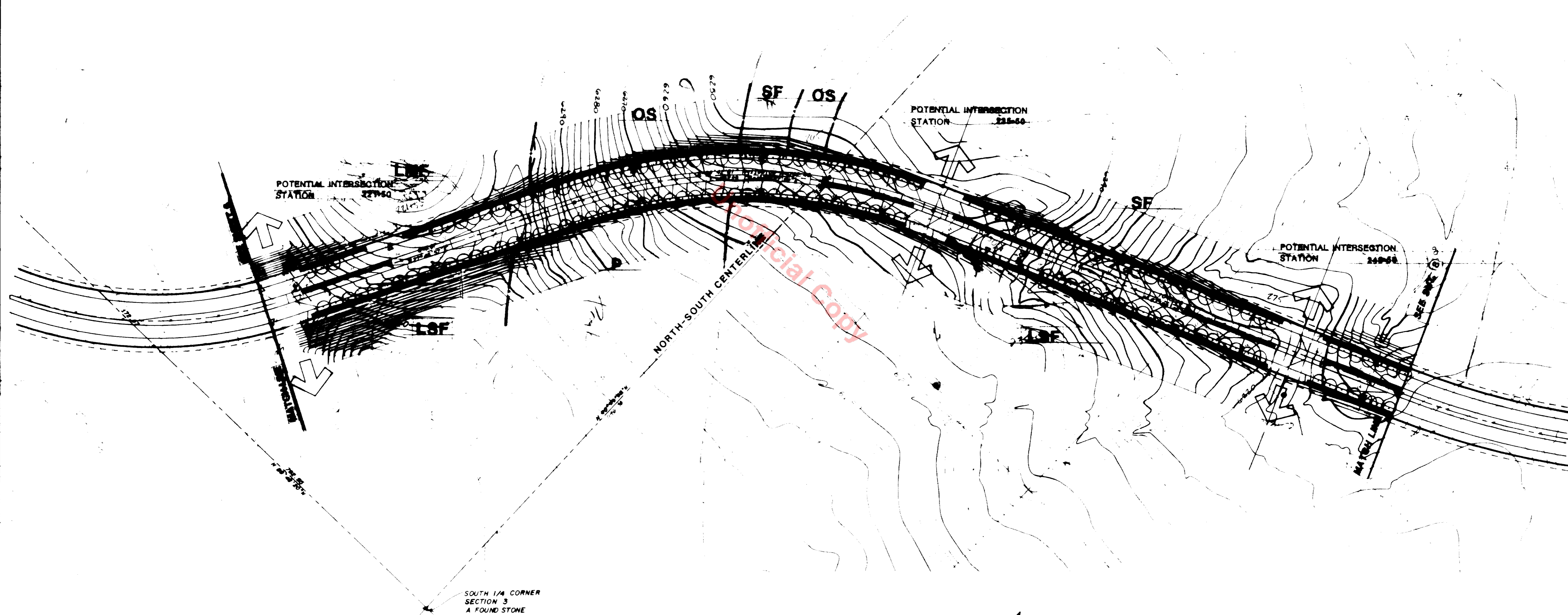
CURVE TABLE					
CURVE	DELTA	RADIUS	ARC	CHORD	CHORD BRG
1	20°15'14"	917.00	324.16	522.47	N 83°58'49"E
2	86°34'29"	20.00	30.22	27.43	S 63°11'35"E
3	86°35'28"	20.00	30.23	27.43	N 23°23'21"E



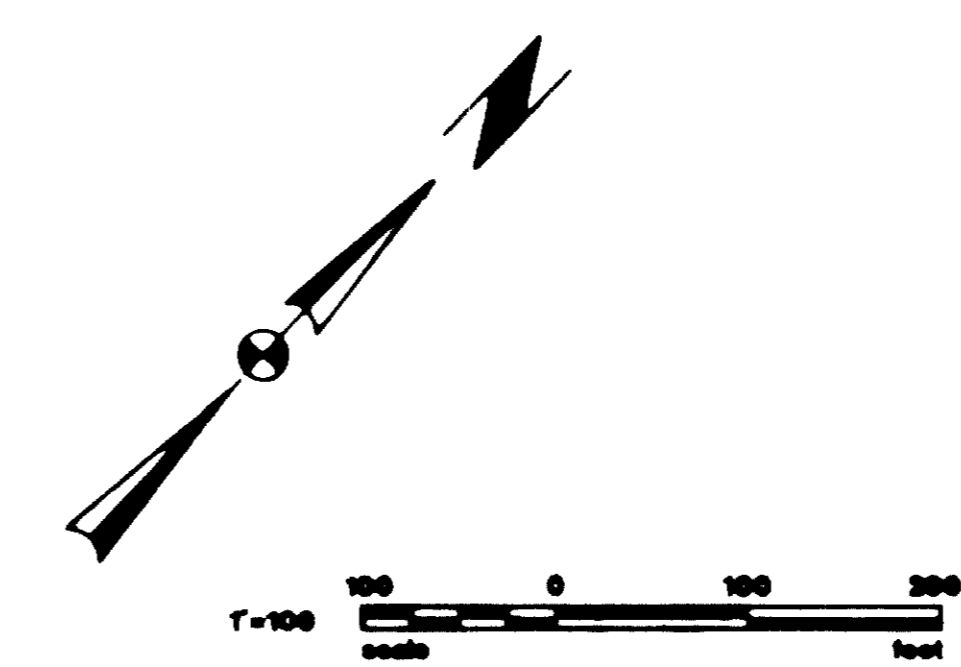
Prepared by Design Workshop, Inc.

MEADOWS BOULEVARD

SHEET 6 OF 6



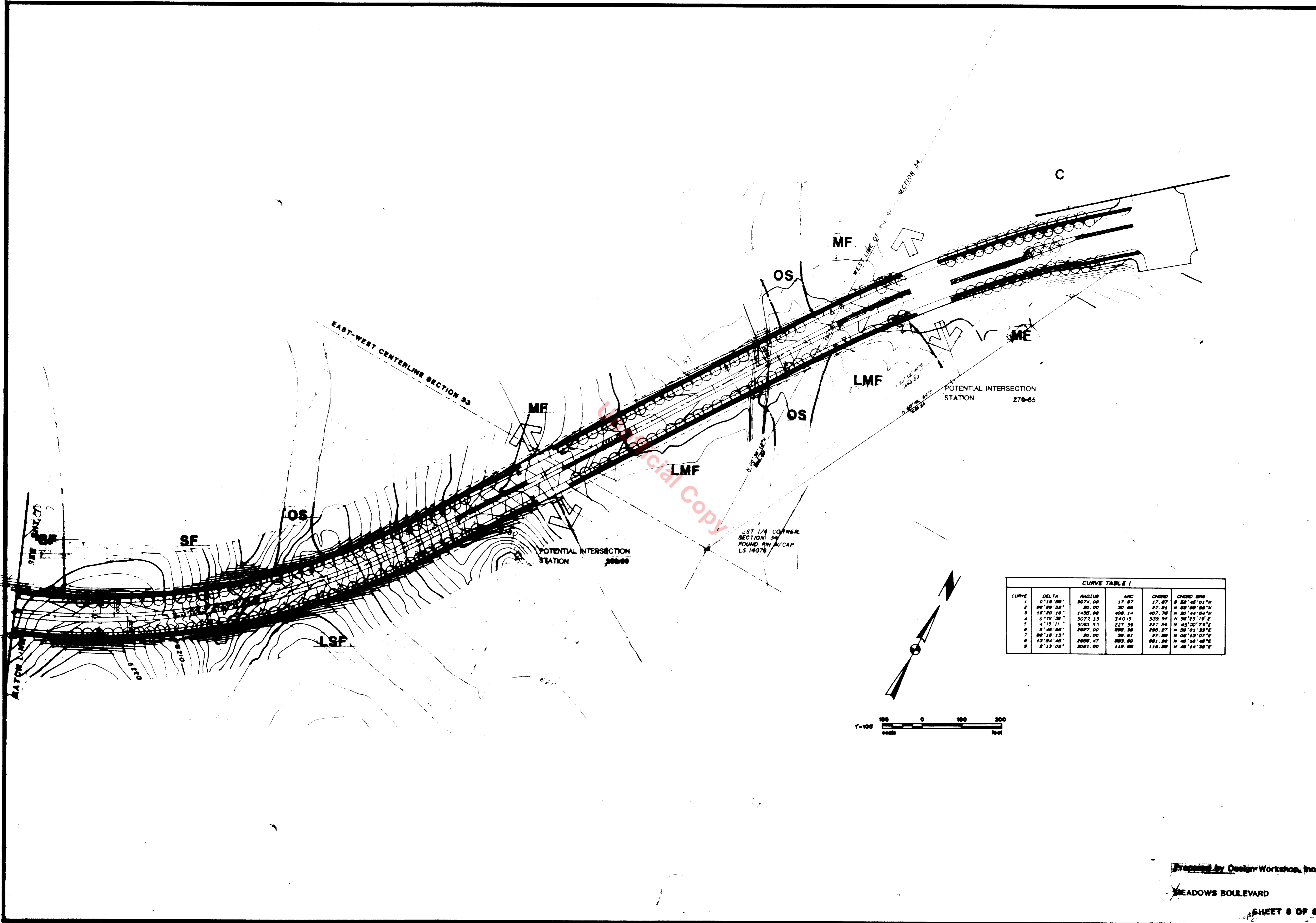
Official Copy



Prepared by Design Workshop, Inc.

MEADOWS BOULEVARD

SHEET 7 OF 8



Official Copy

CURVE TABLE I

CURVE	DELTA	RADIUS	ARC	CHORD	CHORD BEARING
1	0° 18' 00"	3074.00	17.87	17.87	S 88° 48' 51" W
2	80° 28' 58"	20.00	30.80	27.81	N 82° 08' 58" W
3	18° 20' 10"	1435.00	408.14	407.78	N 30° 44' 54" W
4	6° 19' 58"	3077.35	340.13	339.94	N 36° 23' 19" E
5	4° 13' 11"	3083.35	227.39	227.34	N 48° 01' 59" E
6	3° 48' 58"	2887.00	286.30	286.27	N 80° 01' 53" E
7	88° 18' 13"	20.00	30.81	27.80	N 08° 13' 07" E
8	13° 54' 45"	2808.27	883.80	881.80	N 48° 10' 48" E
9	2° 13' 08"	3081.00	118.88	118.88	N 48° 14' 38" E

