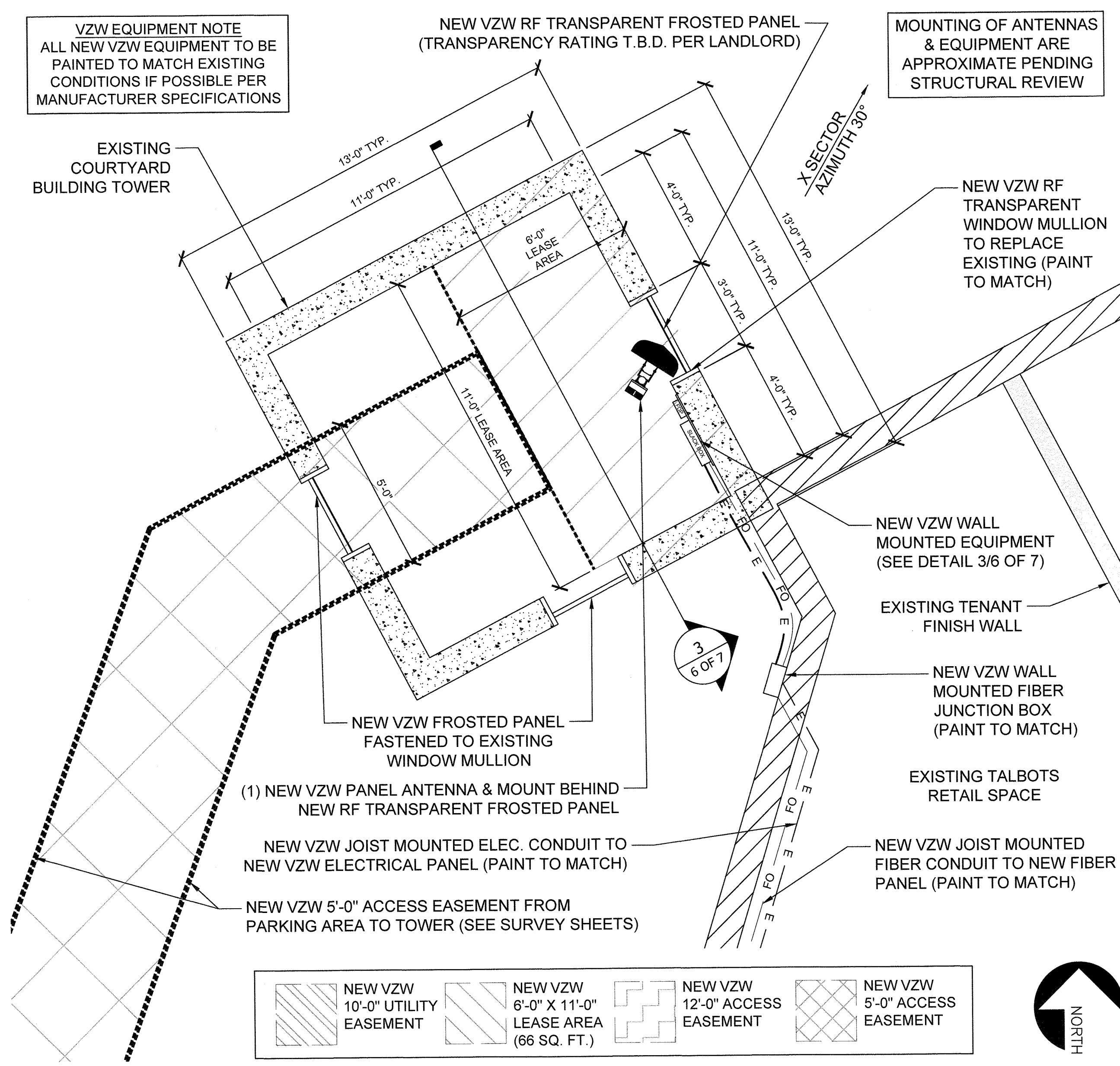


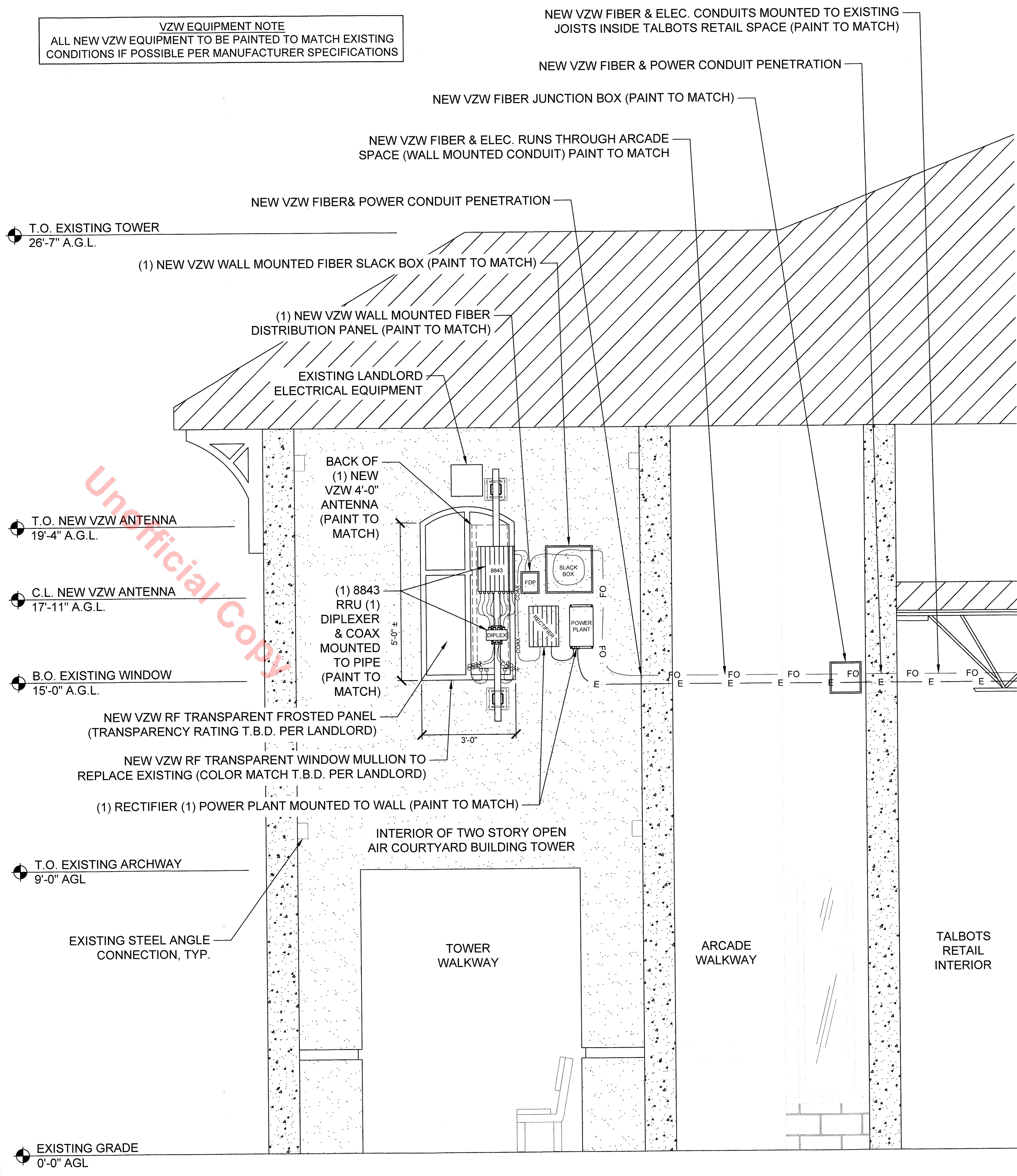
1 TOWER OPEN INTERIOR SCALE: NTS NOT TO SCALE



2 TOWER ANTENNA PLAN SCALE: 3/8"=1'-0" (FULL SIZE)

SITE DEVELOPMENT PLAN AMENDMENT NO. 13

FOR A PORTION OF LOT 3, BLOCK 1, CASTLE ROCK FACTORY SHOPS
 AN AMENDMENT TO CASTLE ROCK MAJOR MODIFICATION TO THE FINAL PD SITE PLAN
 LOCATED IN THE NORTHEAST QUARTER OF SECTION 27, TOWNSHIP 7 SOUTH, RANGE 67
 WEST OF THE 6TH P.M. COUNTY OF DOUGLAS, STATE OF COLORADO



3 TOWER EQUIPMENT INTERIOR SECTION SCALE: 1/2"=1'-0" (FULL SIZE)

APPLICANT:
verizon
 VERIZON WIRELESS SERVICES
 3131 S. VAUGHN WAY, SUITE 550
 AURORA, CO 80014

PLANS PREPARED BY:
RLS
 RELIANT LAND SERVICES
 8170 N. 86TH PLACE, STE 103
 SCOTTSDALE, AZ 85258

SITE INFORMATION:
 DEN OUTLETS SC 01
 5050 FACTORY SHOPS BOULEVARD
 UNIT 170C
 CASTLE ROCK, CO 80108
 DOUGLAS COUNTY

ISSUED FOR:

| REV | DATE | DESCRIPTION | BY |
|-----|---------|--------------------------------|----|
| 1 | 5/7/20 | 90% ZD's REV A FIBER ROUTE | MC |
| 2 | 8/7/20 | 95% ZD's ZONING COMMENTS | MC |
| 3 | 9/30/20 | 95% ZD's REV A ZONING COMMENTS | MC |
| 4 | 10/4/20 | 100% ZD's FINAL ZONING | MC |

LICENSURE INFO:

SHEET TITLE:
COURTYARD BUILDING TOWER ANTENNA & EQUIPMENT PLANS

SHEET NUMBER:
6 OF 7
SITE DEVELOPMENT PLAN AMENDMENT NO. 13 FOR A PORTION OF LOT 3, BLOCK 1, CASTLE ROCK FACTORY SHOPS | SDP20-00013

