

**PLAT IDENTIFICATION SHEET**

RECEPTION#: 316993

DATE: 11/28/83

TIME:

FEE: \$

**GRANTOR:**  
(owner/signer)

**GRANTEE:**  
(subdivision name or name of plat)

Castleview Condos

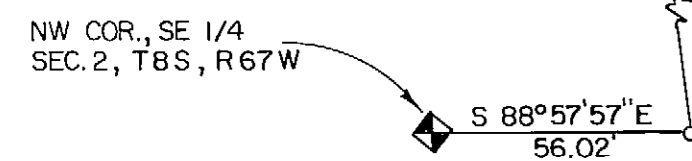
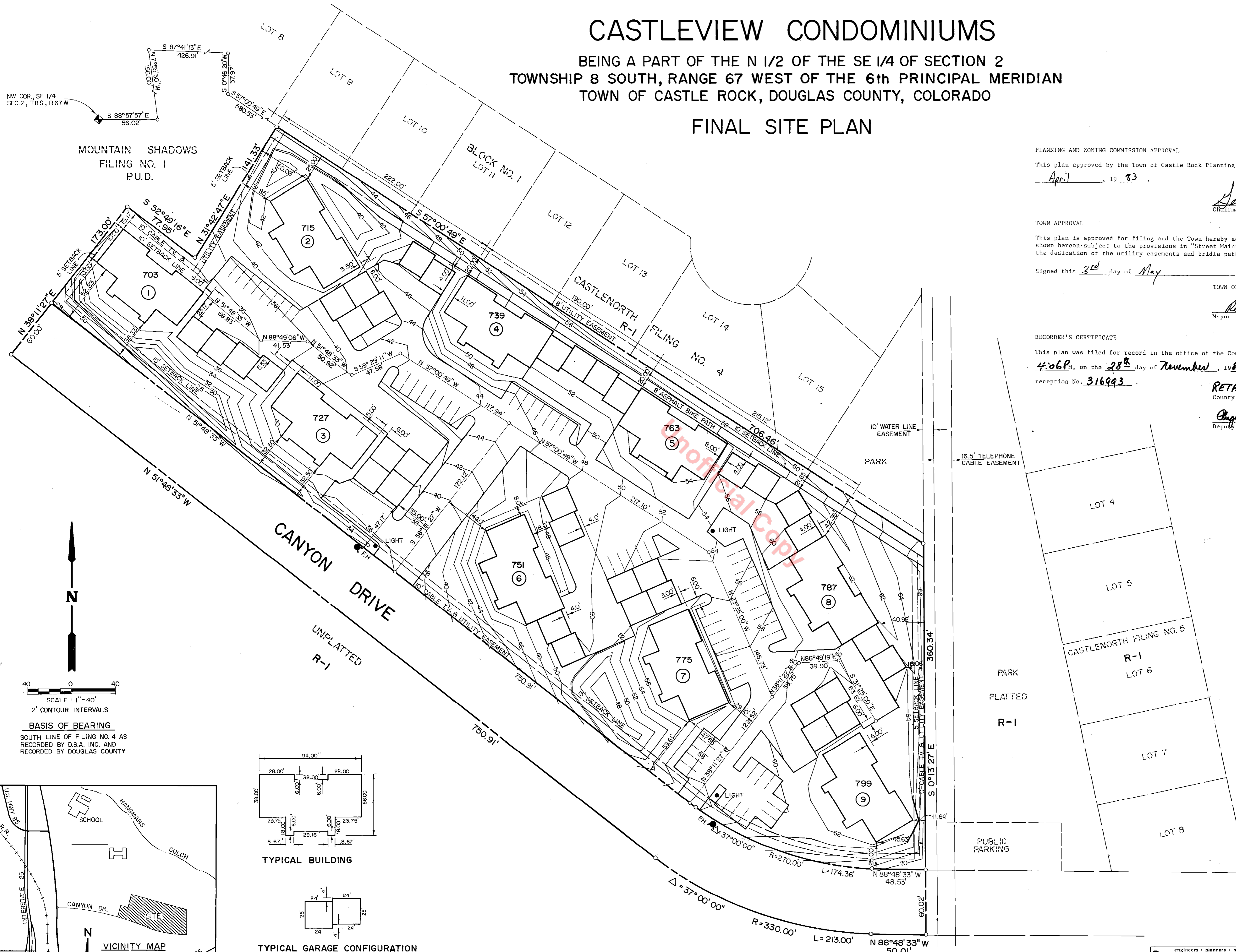
**LEGAL:**  
(section-township-range)

NEW SUBDIVISION ABBREV: \_\_\_\_\_

# CASTLEVIEW CONDOMINIUMS

BEING A PART OF THE N 1/2 OF THE SE 1/4 OF SECTION 2  
TOWNSHIP 8 SOUTH, RANGE 67 WEST OF THE 6th PRINCIPAL MERIDIAN  
TOWN OF CASTLE ROCK, DOUGLAS COUNTY, COLORADO

## FINAL SITE PLAN



MOUNTAIN SHADOWS  
FILING NO. 1  
P.U.D.

PLANNING AND ZONING COMMISSION APPROVAL

This plan approved by the Town of Castle Rock Planning and Zoning Commission this 21<sup>st</sup> day of April, 19 83.

*Donald Wrightman*  
Chairman

TOWN APPROVAL

This plan is approved for filing and the Town hereby accepts the dedication of the streets and roads shown hereon subject to the provisions in "Street Maintenance" set forth above, and further accepts the dedication of the utility easements and bridle path easements shown hereon.

Signed this 3<sup>rd</sup> day of May, 19 83.

TOWN OF CASTLE ROCK

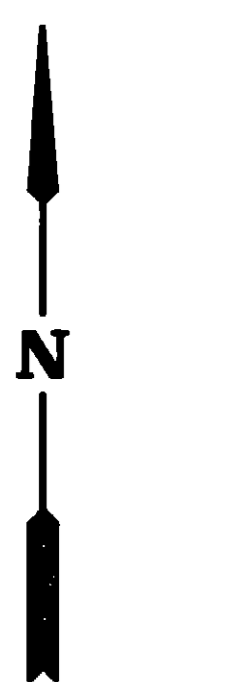
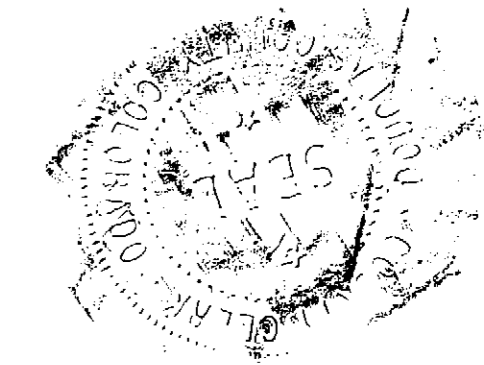
*Robert F. Fols*  
Mayor

RECORDER'S CERTIFICATE

This plan was filed for record in the office of the County Clerk and Recorder of Douglas County at 4:06 P.M., on the 28<sup>th</sup> day of November, 19 83 in book \_\_\_\_\_, page \_\_\_\_\_, map reception No. 316993.

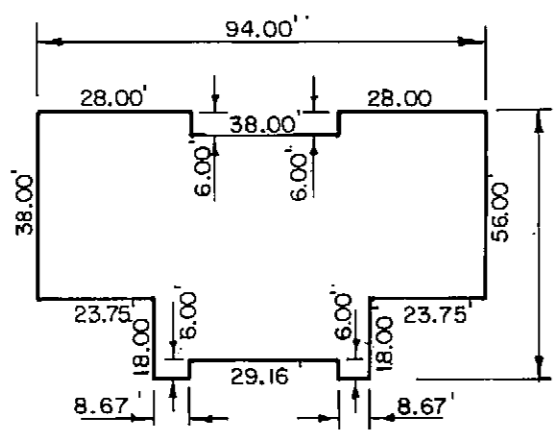
**RETA A. CRAIN**  
County Clerk and Recorder

*Angela S. Brown*  
Deputy

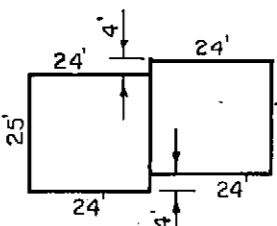


SCALE: 1" = 40'  
2' CONTOUR INTERVALS

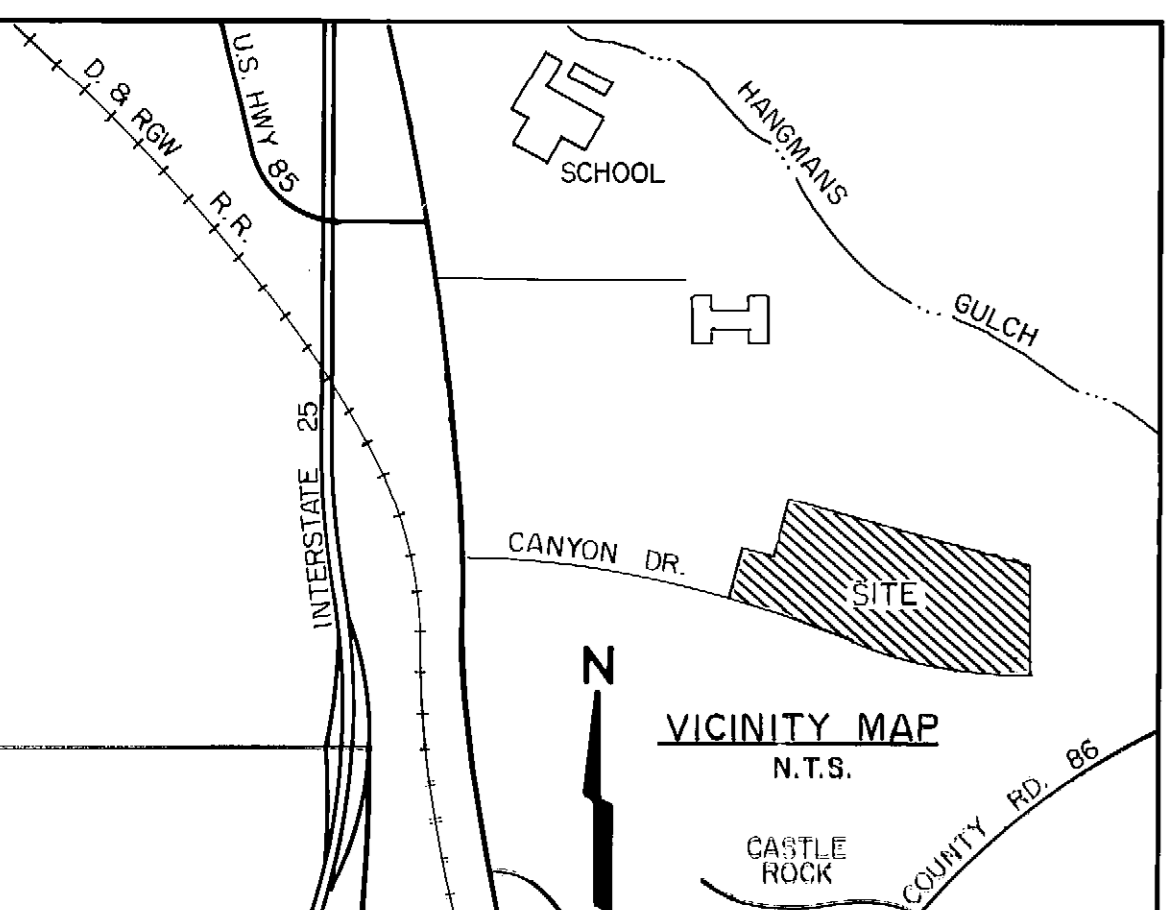
BASIS OF BEARING  
SOUTH LINE OF FILING NO. 4 AS  
RECORDED BY D.S.A. INC. AND  
RECORDED BY DOUGLAS COUNTY



TYPICAL BUILDING



TYPICAL GARAGE CONFIGURATION



VICINITY MAP  
N.T.S.

SEI INC.	engineers • planners • surveyors	Date: SEPTEMBER, 1983	Job No. 283-1
	SUTHERLAND ENGINEERS, INC. 2180 SOUTH IVANHOE STREET SUITE 200 DENVER, COLORADO 80222 (303) 759-0951	Drawn By: J.L.B. Designed By: M.C.S. Scale: 1" = 40'	
		Sheet: 1 of 25	Sheets:

DOUGLAS CO., COLO. CLERK & RECORDER  
 316993 - 11/28/83  
 CASTLEVIEW CONDOS  
 3/6/93  
 CASTLEVIEW CONDOMINIUMS  
 FINAL SITE PLAN

