

TOWN OF CASTLE ROCK
NON-MATERIAL SITE DEVELOPMENT PLAN AMENDMENT CERTIFICATE

NAME OF SITE DEVELOPMENT PLAN:

Final PD Site Plan, Douglas County Justice Center Filing No. 3, Lot 4A, First Amendment

RECEPTION NO. OF SITE DEVELOPMENT PLAN: 2003101861

PURPOSE STATEMENT:

Douglas County Justice Center Filing No. 3, First Amendment, Lot 4A, created the overall site layout, which included the building, sidewalk, parking lot, and associated landscape. The owner wishes to add a generator, walled enclosure, and landscaping around the generator, as shown on the attached *Amendment Exhibit*.

STATEMENT OF DIRECTOR OF DEVELOPMENT SERVICES APPROVAL

THIS NON-MATERIAL SITE DEVELOPMENT PLAN AMENDMENT WAS APPROVED BY THE DIRECTOR OF DEVELOPMENT SERVICES OF THE TOWN OF CASTLE ROCK, COLORADO ON THE

31 DAY OF October, 2022.

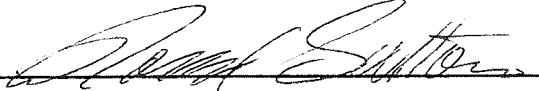


DIRECTOR OF DEVELOPMENT SERVICES

**TOWN OF CASTLE ROCK
NON-MATERIAL SITE DEVELOPMENT PLAN AMENDMENT CERTIFICATE**

OWNERSHIP CERTIFICATION

THE UNDERSIGNED ARE ALL THE OWNERS OF CERTAIN LANDS IN THE TOWN OF CASTLE ROCK,
COUNTY OF DOUGLAS AND STATE OF COLORADO DESCRIBED HEREIN.



Ronald Sutton, Doxology LLC

SIGNED THIS 27th DAY OF October, 20 22

STATE OF COLORADO)
) ss.
COUNTY OF DOUGLAS)

SUBSCRIBED AND SWORN TO BEFORE ME THIS 27th DAY OF October
20 22 BY Heather Lynn Palermo.

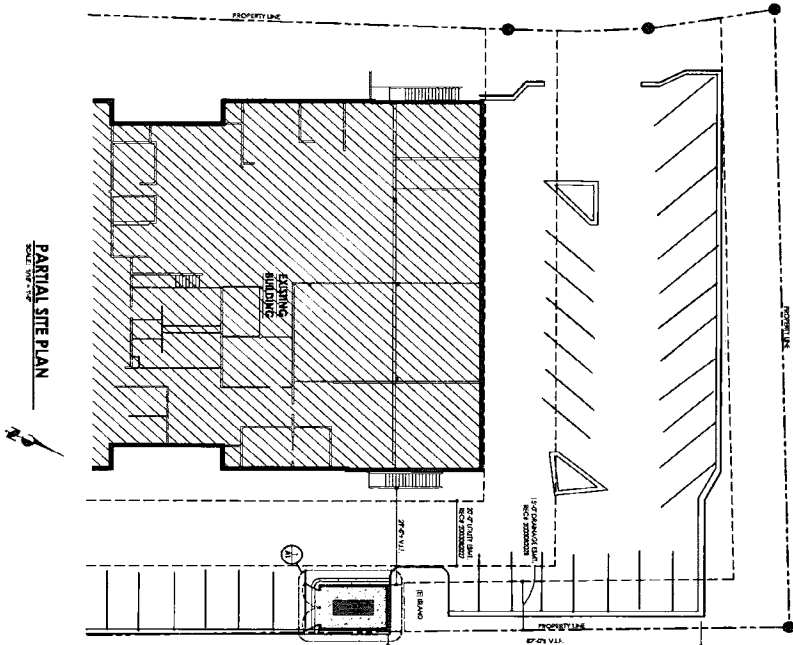
WITNESS MY HAND AND OFFICIAL SEAL.



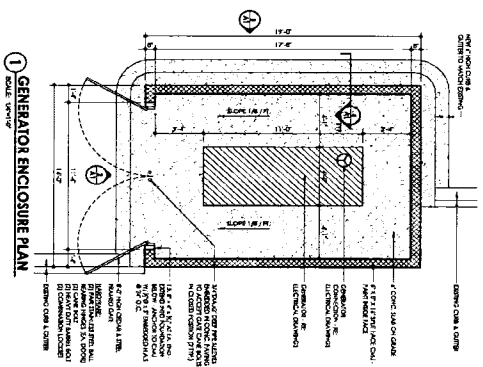
NOTARY PUBLIC

MY COMMISSION EXPIRES: 10/18/22.

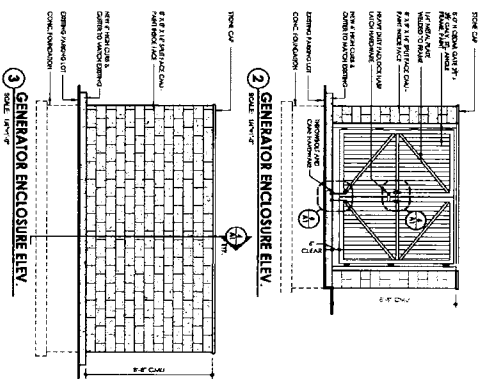
HEATHER LYNN PALERMO
NOTARY PUBLIC
STATE OF COLORADO
NOTARY ID 20224040364
MY COMMISSION EXPIRES 10/18/2026



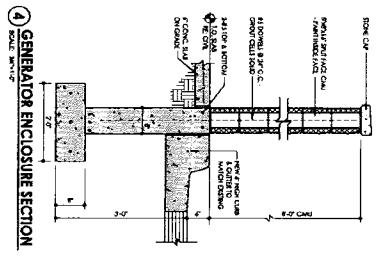
PARTIAL SITE PLAN



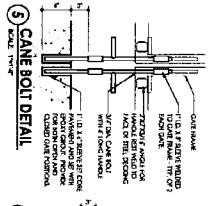
1 GENERATOR ENCLOSURE PLAN
SCALE: 1/8" = 1'-0"



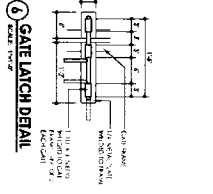
2 GENERATOR ENCLOSURE ELEV.
SCALE: 1/8" = 1'-0"



3 GENERATOR ENCLOSURE SECTION
SCALE: 1/8" = 1'-0"



4 CANE BOU DETAIL
SCALE: 1/8" = 1'-0"



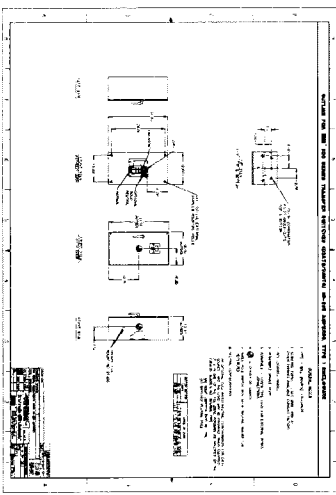
5 GATE LATCH DETAIL
SCALE: 1/8" = 1'-0"

TOOR Project #:
SDP22-0033

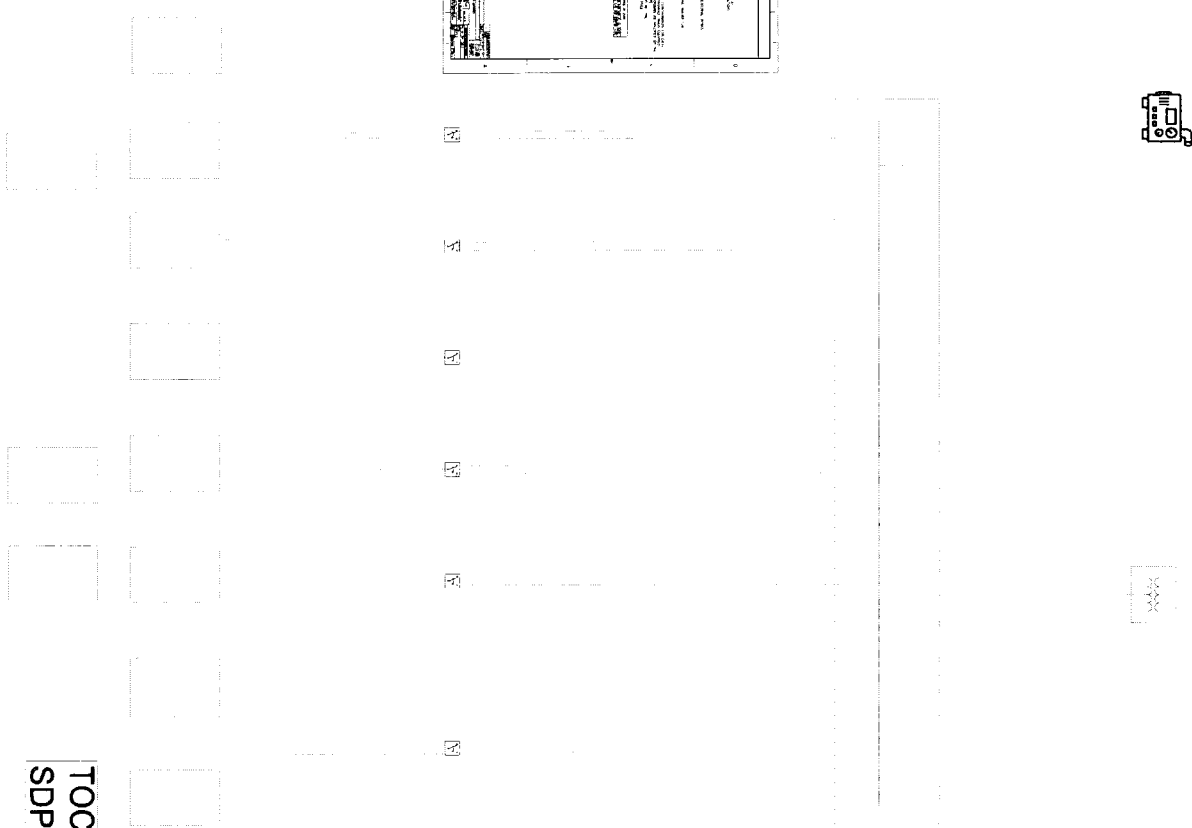
<p>Compounder's International Analytical Laboratory 4760 Castleton Way Castle Rock, CO 80108</p>	<p>LEE ARCHITECTS/ INTERIOR DESIGNERS 2235 S. WADSWORTH BLVD. SUITE #21 DENVER, COLORADO 80227 PHONE: 303.989.4500 FAX: 989.4511</p>	<p>STATE OF COLORADO PROFESSIONAL ARCHITECT 08-28-22</p>
<p>GENERATOR ENCLOSURE DRAWING</p>		<p>A-1</p>

FEEDER SCHEDULE
COMMIT AND FEEDER

Feeder No.	Feeder Name	Feeder Type	Feeder Amps	Feeder Voltage	Feeder Location
1
2
3
4
5
6
7
8
9
10
11
12
13
14
15
16
17
18
19
20
21
22
23
24
25
26
27
28
29
30
31
32
33
34
35
36
37
38
39
40
41
42
43
44
45
46
47
48
49
50



Blue Star	208v
Phase	3
PF	80%
HZ	60
Model	UCD174H
KW	200
AMPS	695
CONNECT	12V
Fault Current	1400A



TOCR Project #
SDP22-0033

Twin State Security
 Books Electric Inc.
 W12198 570th AV
 Prescott WI 54021
 612-919-7785

Drawn By:
 Mike Books



Compounder's International Analytical Laboratory

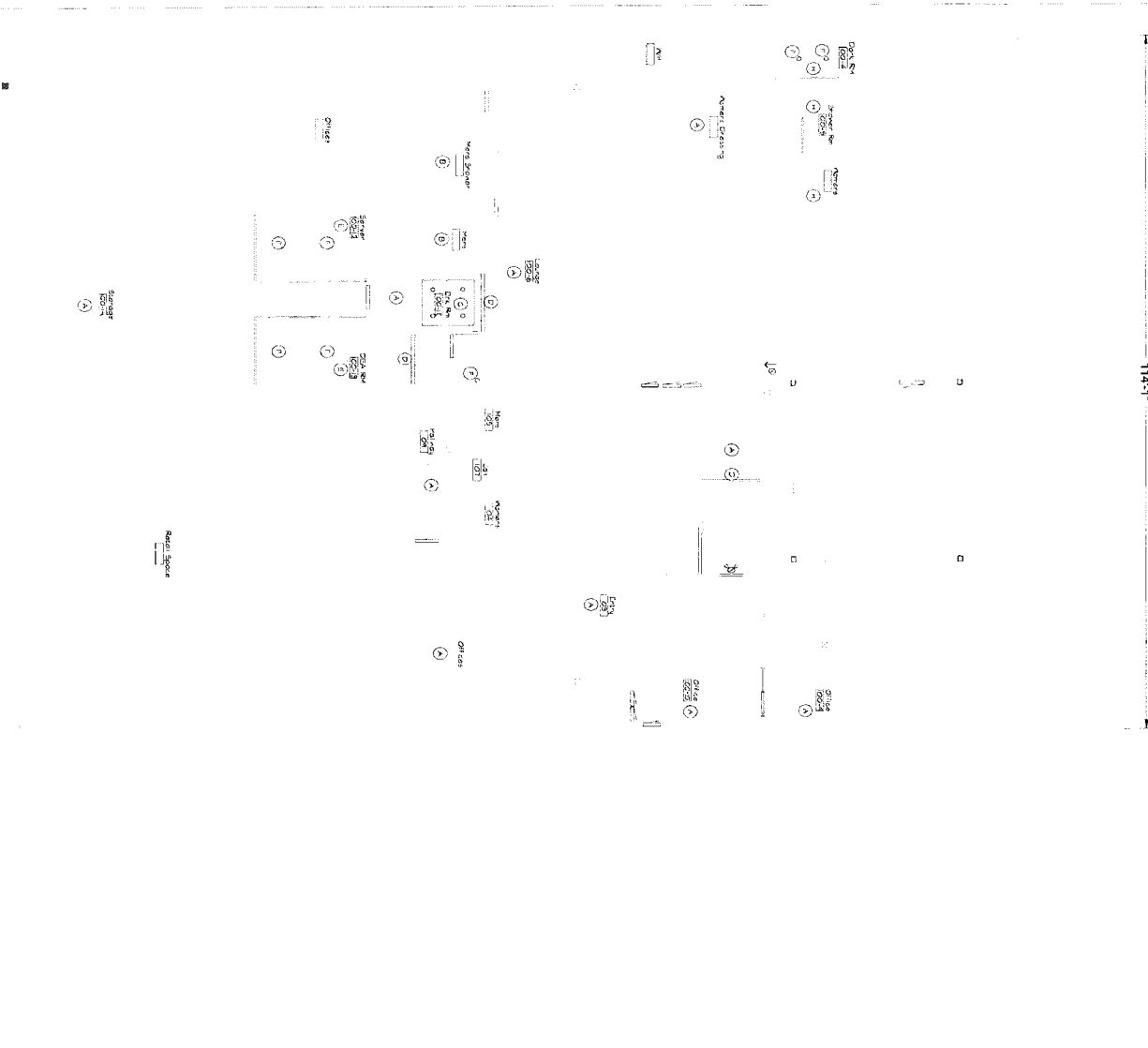
4760 Castleton Way | Castle Rock, CO 80109

Engineer
 #3 Consulting Engineers

Stamp

Generator
Page Number
EB003

114'-1"



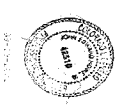
ARC FLASH SCHEDULE

Equipment	Voltage (kV)	Available Fault Current (kA)	Incident Energy (cal/cm²)	Required PPE
Panel 101	480	15000	10.6	Level 4
Panel 102	480	15000	10.6	Level 4
Panel 103	480	15000	10.6	Level 4
Panel 104	480	15000	10.6	Level 4
Panel 105	480	15000	10.6	Level 4
Panel 106	480	15000	10.6	Level 4
Panel 107	480	15000	10.6	Level 4
Panel 108	480	15000	10.6	Level 4
Panel 109	480	15000	10.6	Level 4
Panel 110	480	15000	10.6	Level 4
Panel 111	480	15000	10.6	Level 4
Panel 112	480	15000	10.6	Level 4
Panel 113	480	15000	10.6	Level 4
Panel 114	480	15000	10.6	Level 4
Panel 115	480	15000	10.6	Level 4
Panel 116	480	15000	10.6	Level 4
Panel 117	480	15000	10.6	Level 4
Panel 118	480	15000	10.6	Level 4
Panel 119	480	15000	10.6	Level 4
Panel 120	480	15000	10.6	Level 4

TOCR Project #
SDP22-0033

Twin State Security
Books Electric Inc,
W12198 570th AV
Prescott WI 54021
612-919-7785

Drawn By:
Mike Books



Compounder's International Analytical Laboratory

4760 Castleton Way | Castle Rock, CO 80109

Engineer
#8 Consulting Engineers

Stamp

Building Plan
Page Number
EB 001