

PLAT IDENTIFICATION SHEET

RECEPTION # : DC9407234

DATE: 2-4-94

TIME

FEE: \$20 (2P)

GRANTOR: Holmby Resiwe Country Club
(OWNER/SIGNER) LTD

GRANTEE: Players Crossing at Plum Creek
(SUBDIVISION NAME OR NAME OF PLAT) Villager #1

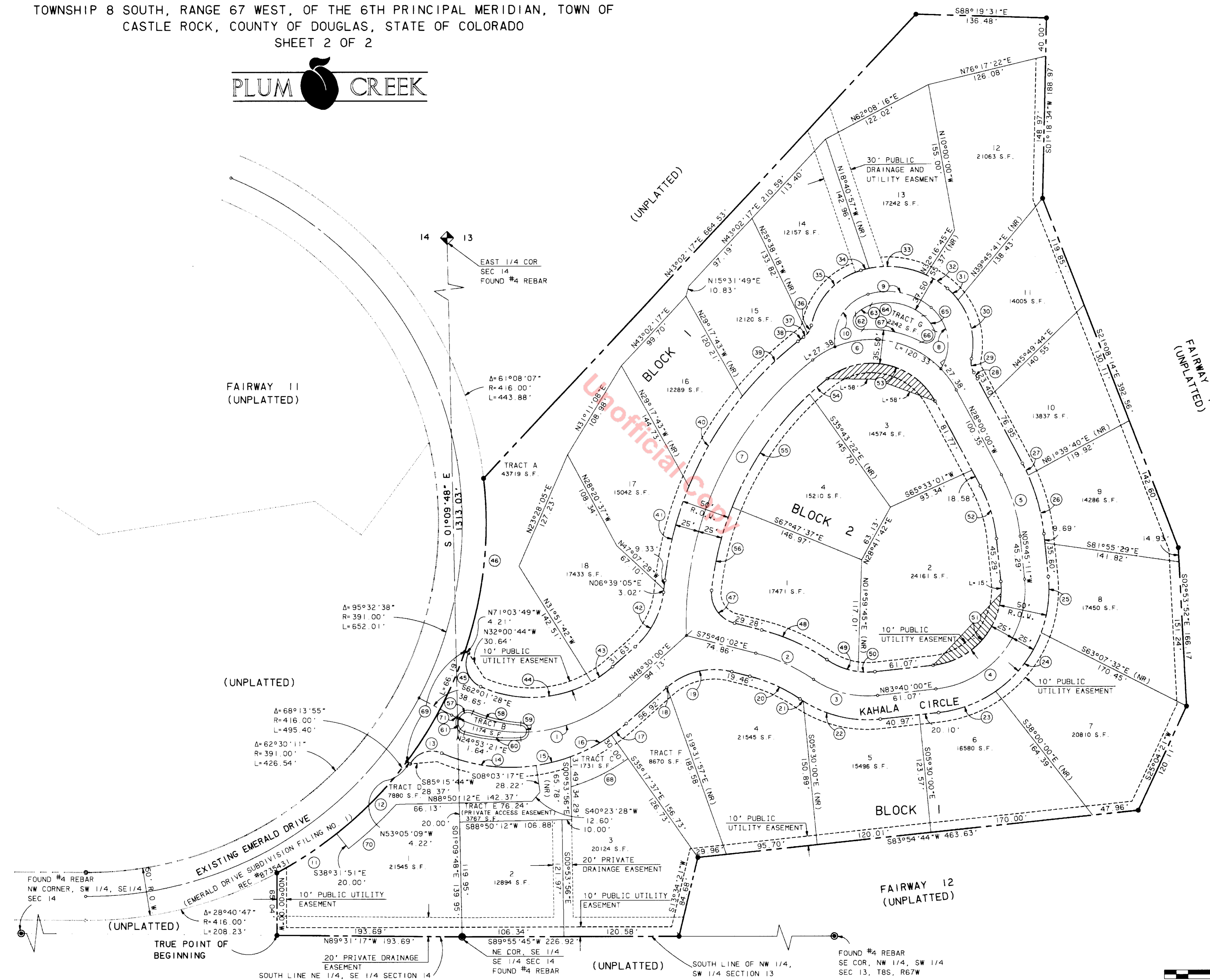
LEGAL: 13 - 8 - 67 ET AL
(SECTION-TOWNSHIP-RANGE)

FINAL PLAT PLAYERS CROSSING AT PLUM CREEK VILLAGES SUBDIVISION FILING NO. 1

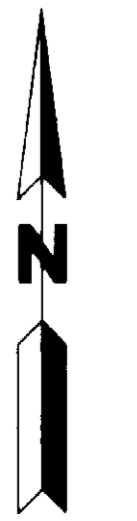
PART OF THE WEST 1/2 OF SECTION 13 AND PART OF THE EAST 1/2 OF SECTION 14,
TOWNSHIP 8 SOUTH, RANGE 67 WEST, OF THE 6TH PRINCIPAL MERIDIAN, TOWN OF
CASTLE ROCK, COUNTY OF DOUGLAS, STATE OF COLORADO
SHEET 2 OF 2



CURVE DATA				
NO	DELTA	RADIUS	ARC	CHORD
1	69°28'32"	155.00'	187.95'	N83°14'16"E 176.64'
2	20°08'20"	190.00'	66.78'	S65°35'52"E 66.44'
3	40°48'18"	100.00'	71.22'	S75°55'51"E 69.72'
4	89°25'11"	105.00'	163.87'	N38°57'24"E 147.74'
5	22°14'49"	175.00'	67.95'	N16°52'36"W 67.52'
6	100°19'18"	100.00'	175.09'	N78°09'39"W 153.57'
7	53°57'08"	350.00'	329.57'	S24°42'08"W 317.53'
8	81°15'28"	50.00'	70.91'	N08°47'39"W 65.12'
9	57°28'32"	70.00'	70.22'	N78°09'39"W 67.31'
10	81°15'28"	50.00'	70.91'	S32°28'21"W 65.12'
11	10°19'47"	416.00'	75.00'	N56°38'02"E 74.90'
12	44°33'18"	416.00'	105.68'	N44°11'30"E 105.39'
13	84°13'50"	28.00'	38.22'	N71°18'21"E 34.87'
14	31°47'58"	182.00'	101.01'	S82°28'43"E 99.72'
15	11°38'28"	182.00'	36.98'	N75°48'04"E 36.91'
16	15°16'27"	182.00'	48.52'	N62°20'36"E 48.37'
17	06°12'23"	182.00'	19.71'	N51°36'11"E 19.70'
18	00°13'46"	75.00'	0.30'	N48°36'53"E 0.30'
19	55°36'13"	75.00'	72.78'	N76°31'52"E 69.96'
20	20°08'20"	165.00'	58.00'	S65°35'52"E 57.70'
21	01°49'29"	125.00'	3.98'	S56°26'27"E 3.98'
22	38°58'49"	125.00'	85.04'	S76°50'36"E 83.41'
23	28°23'09"	130.00'	64.41'	N69°28'26"E 63.75'
24	34°48'43"	130.00'	78.99'	N37°52'30"E 77.78'
25	26°13'20"	130.00'	59.50'	N07°21'29"E 58.98'
26	18°17'29"	200.00'	63.85'	N1°53'56"W 63.58'
27	03°57'20"	200.00'	13.81'	N26°01'20"W 13.80'
28	03°24'35"	125.00'	7.44'	N29°42'17"W 7.44'
29	43°21'38"	20.00'	15.14'	N09°43'46"W 14.78'
30	48°05'51"	76.00'	65.13'	N12°35'52"W 63.15'
31	12°16'35"	76.00'	16.28'	N43°17'06"W 16.25'
32	15°41'46"	96.00'	26.30'	N57°16'16"W 26.22'
33	38°19'11"	96.00'	60.85'	N83°16'45"W 59.84'
34	05°27'34"	96.00'	9.15'	S75°49'52"W 9.14'
35	61°22'26"	76.00'	81.41'	S42°24'52"W 77.57'
36	27°32'39"	20.00'	9.61'	S25°29'58"W 9.52'
37	15°48'58"	20.00'	5.52'	S47°10'47"W 5.50'
38	03°24'35"	125.00'	7.44'	S53°22'59"W 7.44'
39	12°32'04"	375.00'	82.04'	S45°24'40"W 81.87'
40	16°48'55"	375.00'	110.06'	S30°44'11"W 109.66'
41	15°37'57"	375.00'	102.52'	S14°30'44"W 102.00'
42	41°50'55"	90.00'	65.74'	S27°34'32"W 64.28'
43	12°14'18"	128.00'	27.34'	S54°37'09"W 27.29'
44	53°42'25"	128.00'	119.98'	S87°35'30"W 115.64'
45	92°02'49"	26.00'	41.77'	N19°15'52"W 37.42'
46	25°22'09"	416.00'	184.20'	N06°15'06"E 182.69'
47	81°33'18"	32.00'	45.55'	N34°53'23"W 41.80'
48	20°08'20"	215.00'	75.57'	S65°35'52"E 75.18'
49	27°03'49"	75.00'	35.43'	S69°03'37"E 35.10'
50	13°44'29"	75.00'	17.99'	S89°27'46"E 17.94'
51	89°25'11"	80.00'	124.85'	N36°17'24"E 112.56'
52	22°14'49"	50.00'	58.24'	N16°52'36"W 57.88'
53	100°19'18"	75.00'	131.32'	N78°09'39"W 115.18'
54	04°23'21"	325.00'	24.90'	S49°29'02"W 24.89'
55	25°29'26"	325.00'	144.59'	S34°32'38"W 143.40'
56	15°54'39"	325.00'	90.25'	S13°50'36"W 89.96'
57	93°41'11"	9.50'	15.53'	N7°44'56"E 13.86'
58	109°05'19"	157.50'	52.47'	S78°24'54"E 52.23'
59	172°07'17"	6.50'	19.53'	S00°06'05"W 12.97'
60	19°54'29"	170.50'	59.24'	N83°53'03"W 58.94'
61	98°49'09"	9.50'	16.38'	N24°31'13"W 14.43'
62	138°51'09"	9.50'	23.02'	N25°15'12"W 17.79'
63	28°55'42"	38.50'	19.44'	N58°38'14"E 19.23'
64	57°28'32"	58.50'	58.68'	S78°09'39"E 56.25'
65	28°55'42"	38.50'	19.44'	S34°57'32"E 19.23'
66	138°51'09"	9.50'	23.02'	S48°55'54"W 17.79'
67	33°02'15"	110.50'	63.72'	N78°09'39"W 62.84'
68	18°03'45"	212.00'	66.83'	N63°44'16"E 66.56'
69	18°03'17"	416.00'	131.09'	S27°53'12"W 130.55'
70	08°56'36"	436.00'	68.06'	S46°59'50"W 67.99'
71	03°16'16"	155.00'	8.85'	S63°39'36"E 8.85'



LEGEND	
	PLAT BOUNDARY LINE
	EXISTING DEEDED GOLF COURSE BOUNDARY LINE
	EXISTING PLATTED BOUNDARY LINES
	EXISTING DEEDED GOLF COURSE BOUNDARY LINE (TO BE ADJUSTED)
	LOT OR PARCEL LINES
	SECTION LINES
	FOUND REBAR
	SECTION CORNER
	EASEMENT LINE
	SET #4 REBAR WITH CAP LS #18548
	NON-RADIAL
	SIGHT TRIANGLE
	NO IMPROVEMENTS SHALL BE PLACED, PLANTED OR CONSTRUCTED THAT EXCEED 30" HEIGHT.



SCALE 1" = 50'

REV. 01-05-94
REV. 11-10-93
PREPARED BY: DATE: 10-03-93
MARTIN/MARTIN
Consulting Engineers
4251 Kipling St.
Wheat Ridge, Co. 80033-4311