

OFFICIAL RECORDS
DOUGLAS COUNTY CO
CAROLE R. MURRAY
CLERK & RECORDER
RECORDING FEE: \$21.00
3 PGS

2006042423
05/19/2006 02:40 PM



PLAT IDENTIFICATION SHEET

Standard Pacific of Colorado, Inc.

Grantor (owner)

Grantor (owner)

Metzler Ranch 7, Amendment 1, Final Plat

Grantee (name of plat or condo)

Grantee (name of plat or condo)

Subdivision Info: Metzler Ranch Filing: 7

Condo Info: Phase _____ Bldg _____ Unit _____

26

7

67

Section

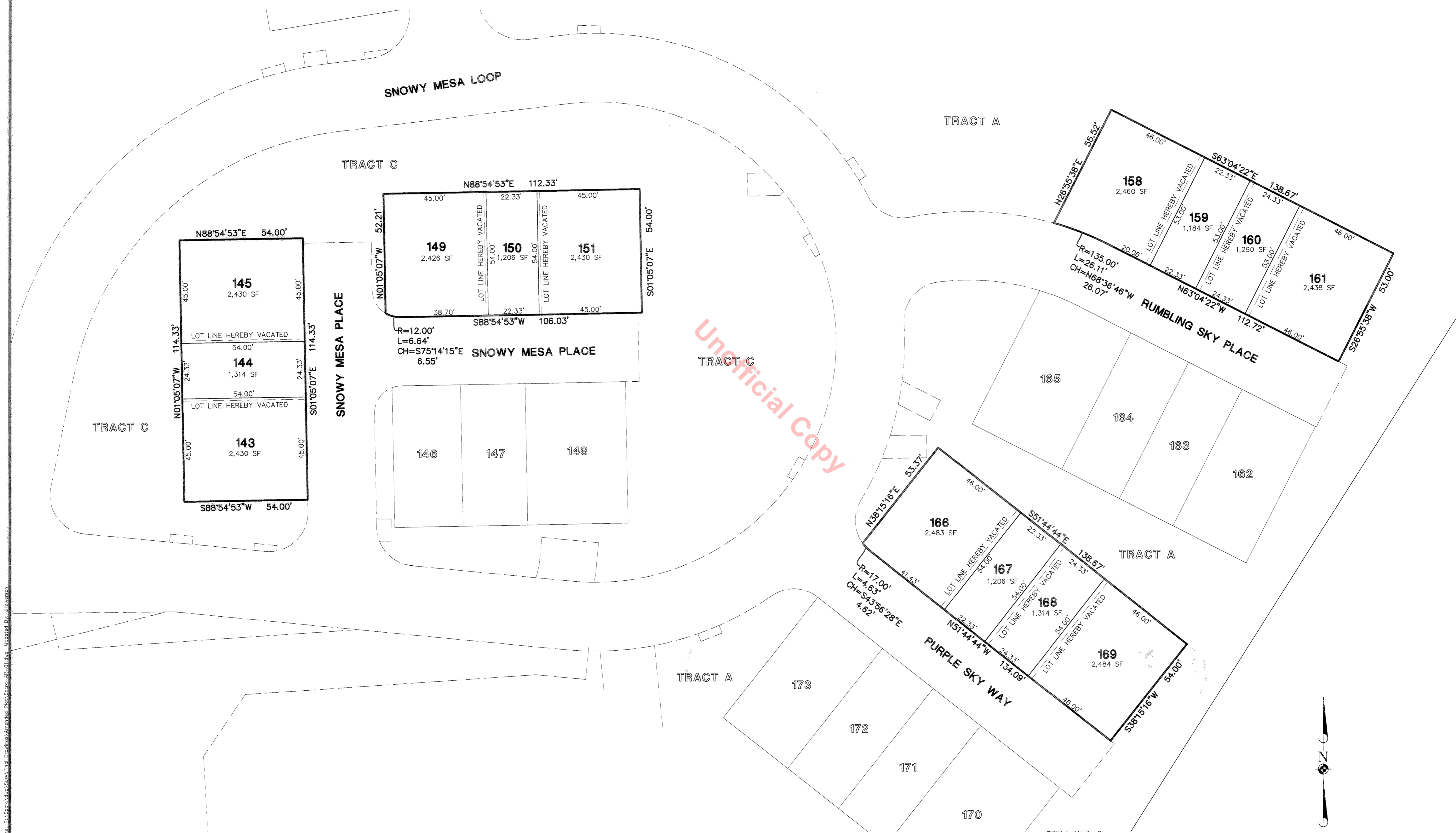
Township

Range

Cross Reference numbers: (reception #s or book and page)

METZLER RANCH FILING NO. 7 AMENDMENT NO. 1

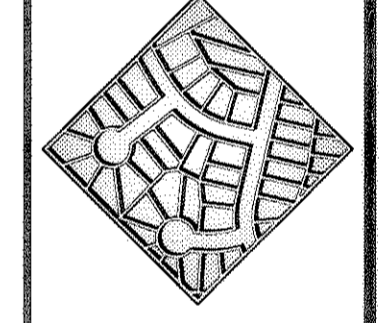
A TRACT OF LAND LOCATED IN THE SOUTH HALF OF SECTION 26,
TOWNSHIP 7 SOUTH, RANGE 67 WEST OF THE SIXTH PRINCIPAL MERIDIAN
COUNTY OF DOUGLAS, STATE OF COLORADO



May 01, 2008 11:37 AM Name: P:\Spartan\Drawings\Amendment\Drawings\7-01.dwg Updated By: jhickson

DATE	REVISIONS	DRAWN BY	CHECKED BY
5-01-08	COMMENTS FROM THE CITY	J.G.H.	J.G.H.
4-20-08	COMMENTS FROM THE CITY AND TITLE COMPANY	J.G.H.	J.G.H.

Manhard Consulting, Ltd.
 Civil Engineers • Surveyors • Water Resources Engineers • Water & Wastewater Engineers
 Environmental Scientists • Landscape Architects • Planners • Construction Managers
 345 Inverness Drive South, Suite 8200 • Englewood, CO 80112 • 303.708.0500 • 303.708.0400 FAX • www.manhard.com



METZLER RANCH FILING NO. 7 AMENDMENT NO. 1
TOWN OF CASTLE ROCK, COUNTY OF DOUGLAS, COLORADO
LOT LINE ADJUSTMENT

PROJ. MGR.: J.G.H.
 PROJ. ASSOC.:
 DRAWN BY: D.M.B.
 CHECKED BY: J.G.H.
 DATE: 03/24/08
 SCALE: 1"=20'
 SHEET
2 OF **2**
 SPCRC C322

