

# **PLAT IDENTIFICATION SHEET**

**Reception #:** 8722230

**Number of pages:** 3

**Date:** 07/29/87

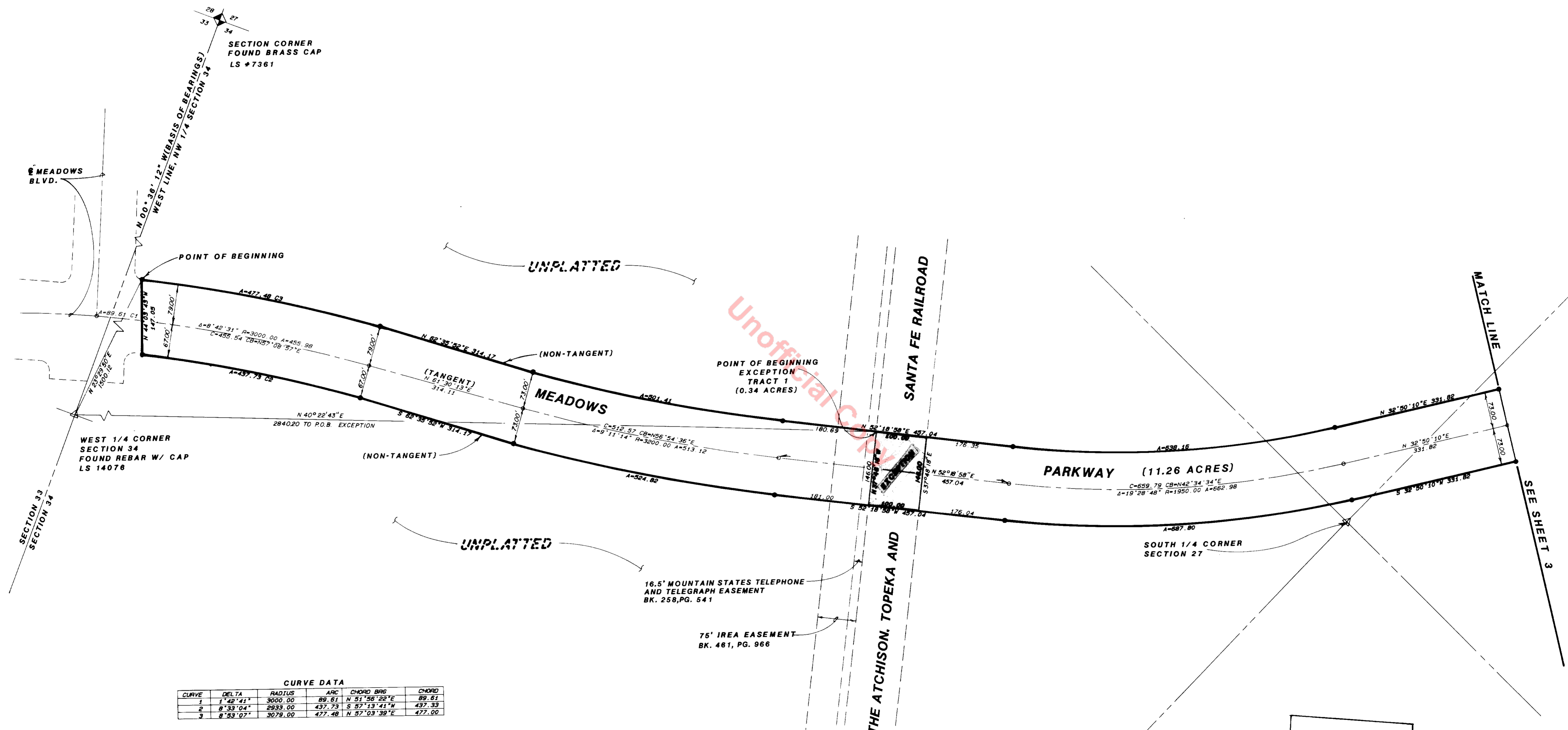
**Name:** MEADOWS PKWY

**MISCELLANEOUS COMMENTS:**

---



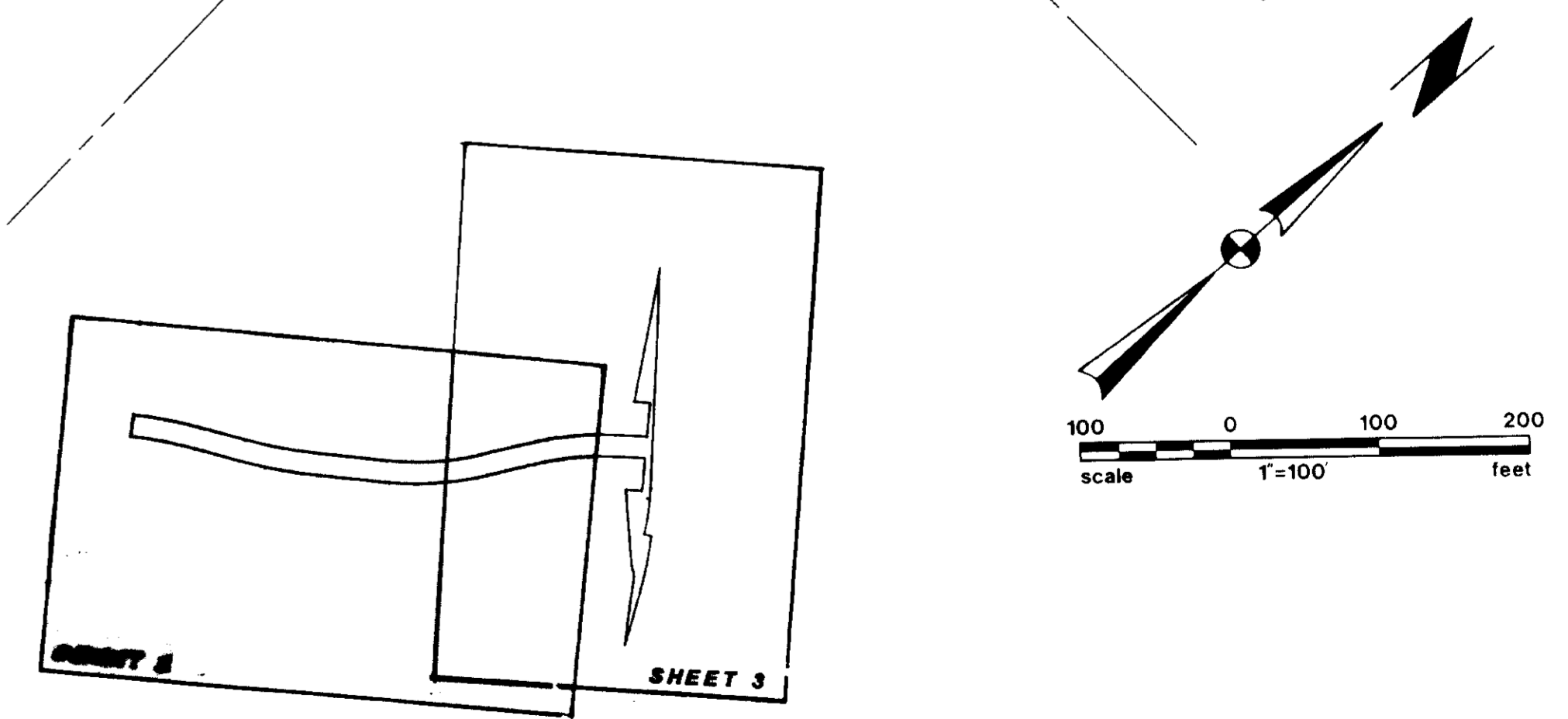
FINAL PLAT  
OF  
**MEADOWS PARKWAY PHASE I**  
A PART OF THE AMENDED MEADOWS P.D.,  
TOWN OF CASTLE ROCK, DOUGLAS COUNTY, COLORADO



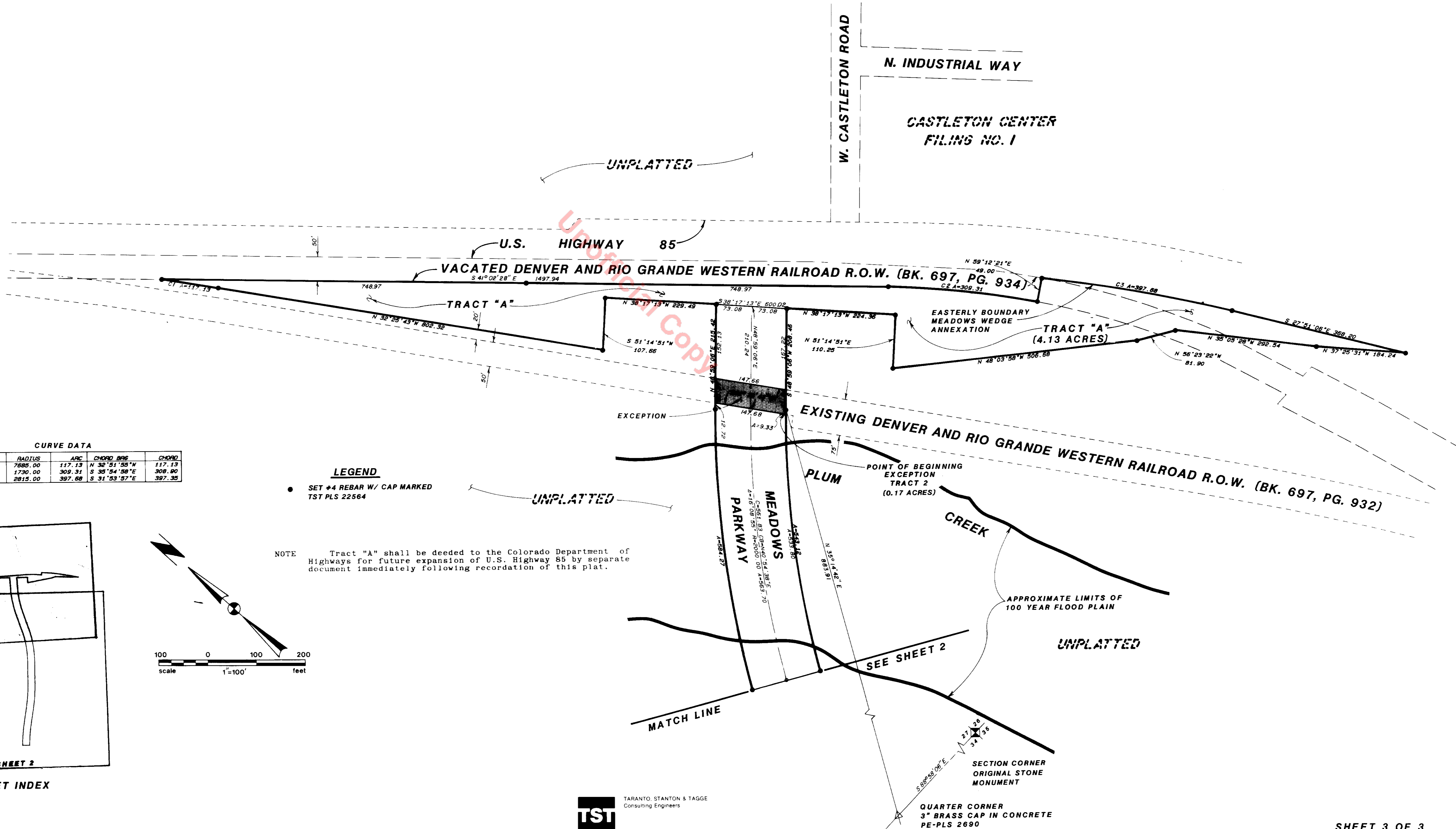
**CURVE DATA**

CURVE	DELTA	RADIUS	ARC	CHORD	BEG	END
1	1°42'41"	3000.00	89.61	N 51°56'22"E	89.61	89.61
2	8°33'04"	2933.00	437.33	S 87°13'41"W	437.33	437.33
3	8°59'07"	3079.00	477.48	N 57°03'39"E	477.00	477.00

**LEGEND**  
● SET #4 REBAR W/ CAP MARKED TST PLS 22564



FINAL PLAT  
OF  
**MEADOWS PARKWAY PHASE I**  
A PART OF THE AMENDED MEADOWS P.D.,  
TOWN OF CASTLE ROCK, DOUGLAS COUNTY, COLORADO



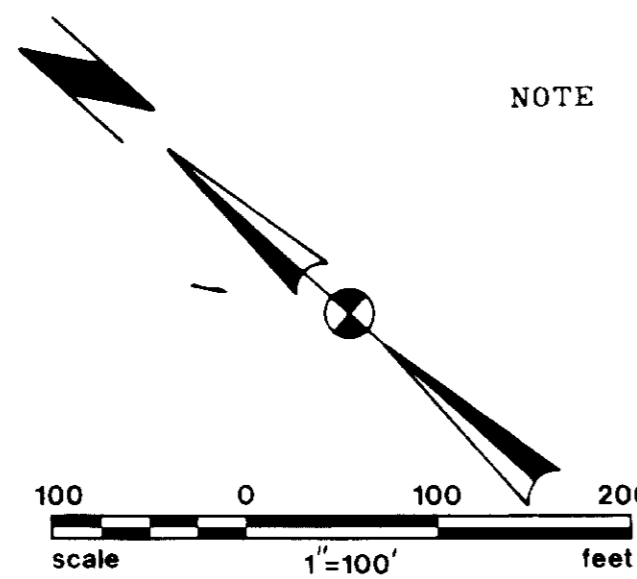
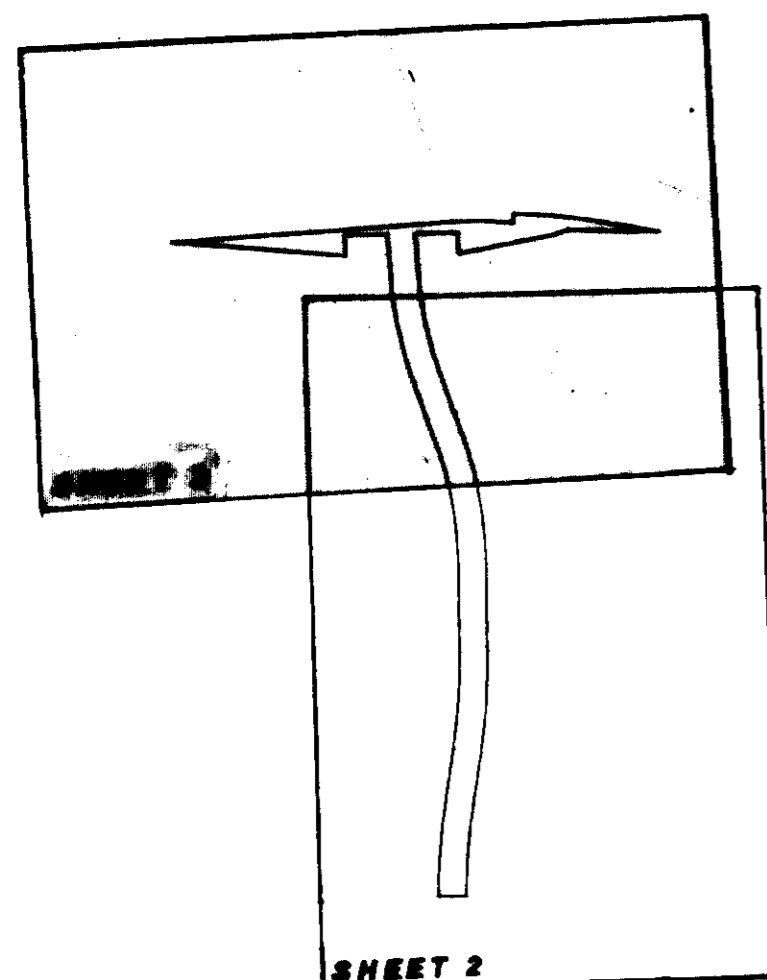
**CURVE DATA**

CURVE	DELTA	RADIUS	ARC	CHORD BEG	CHORD END
1	0° 52' 24"	7685.00	117.13	N 32° 51' 55" W	117.13
2	10° 14' 38"	1730.00	309.31	S 35° 54' 58" E	309.80
3	8° 05' 39"	2815.00	397.68	S 31° 53' 57" E	397.35

**LEGEND**

- SET #4 REBAR W/ CAP MARKED TST PLS 22564

NOTE Tract "A" shall be deeded to the Colorado Department of Highways for future expansion of U.S. Highway 85 by separate document immediately following recordation of this plat.



**TST** TARANTO, STANTON & TAGGE  
Consulting Engineers

SECTION CORNER ORIGINAL STONE MONUMENT  
QUARTER CORNER 3" BRASS CAP IN CONCRETE PE-PLS 2690