



# THE MEADOWS FILING NO. 19

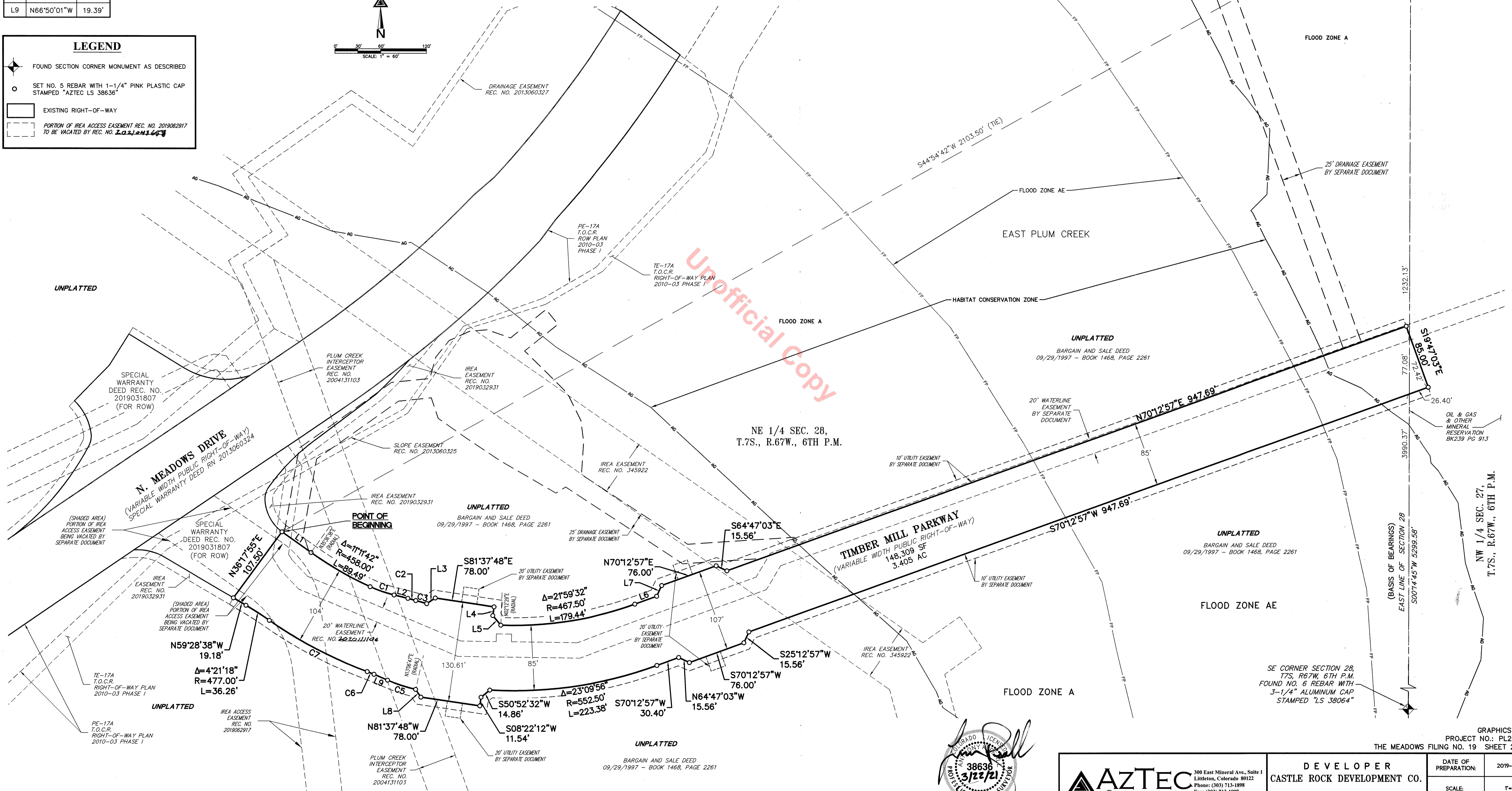
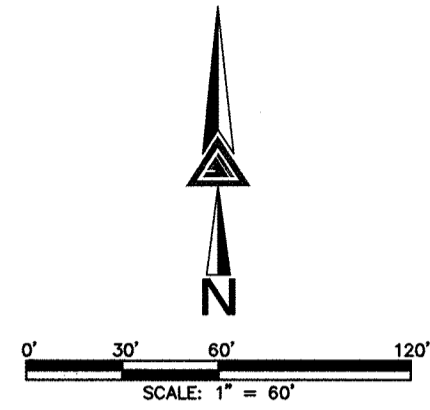
AN UNPLATTED PARCEL OF LAND BEING A PART OF THE  
 NORTHWEST QUARTER OF SECTION 27 AND THE NORTHEAST QUARTER OF SECTION 28,  
 TOWNSHIP 7 SOUTH, RANGE 67 WEST OF THE SIXTH PRINCIPAL MERIDIAN,  
 TOWN OF CASTLE ROCK, COUNTY OF DOUGLAS, STATE OF COLORADO.  
 3.405 ACRES - PL20-0011

LINE	BEARING	LENGTH
L1	S54°23'29"E	46.83'
L2	S76°14'05"E	18.58'
L3	N56°31'51"E	13.41'
L4	S08°22'12"W	11.57'
L5	S39°42'40"E	16.37'
L6	N70°12'57"E	30.40'
L7	N25°12'57"E	15.56'
L8	N34°11'09"W	12.18'
L9	N66°50'01"W	19.39'

CURVE	DELTA	RADIUS	LENGTH
C1	10°39'01"	179.00'	33.27'
C2	2°48'02"	221.00'	10.80'
C3	1°52'28"	454.00'	14.85'
C4	10°03'11"	221.00'	38.78'
C5	3°02'58"	179.00'	9.53'
C6	14°45'39"	562.00'	144.79'
C7			

**LEGEND**

- FOUND SECTION CORNER MONUMENT AS DESCRIBED
- SET NO. 5 REBAR WITH 1-1/4" PINK PLASTIC CAP STAMPED "AZTEC LS 38636"
- EXISTING RIGHT-OF-WAY
- PORTION OF IREA ACCESS EASEMENT REC. NO. 2019062917 TO BE VACATED BY REC. NO. 2021041643



**POINT OF COMMENCEMENT**  
 NE CORNER SECTION 28,  
 T7S, R67W, 6TH P.M.  
 FOUND NO. 6 REBAR WITH  
 2-1/2" ALUMINUM CAP  
 STAMPED "LS 22564"

Unofficial Copy



FOR AND ON BEHALF OF  
 AZTEC CONSULTANTS, INC.

**AZTEC**  
 CONSULTANTS, INC.  
 300 East Mineral Ave., Suite 1  
 Littleton, Colorado 80122  
 Phone: (303) 713-1898  
 Fax: (303) 713-1897  
 www.aztecconsultants.com

**DEVELOPER**  
 CASTLE ROCK DEVELOPMENT CO.  
 3033 EAST 1ST AVE., SUITE 305  
 DENVER, COLORADO 80206  
 (303) 394-5500

DATE OF PREPARATION:	2019-12-02
SCALE:	1"=60'
SHEET 2 OF 2	

GRAPHICS SHEET  
 PROJECT NO.: PL20-0011  
 THE MEADOWS FILING NO. 19 SHEET 2 OF 2