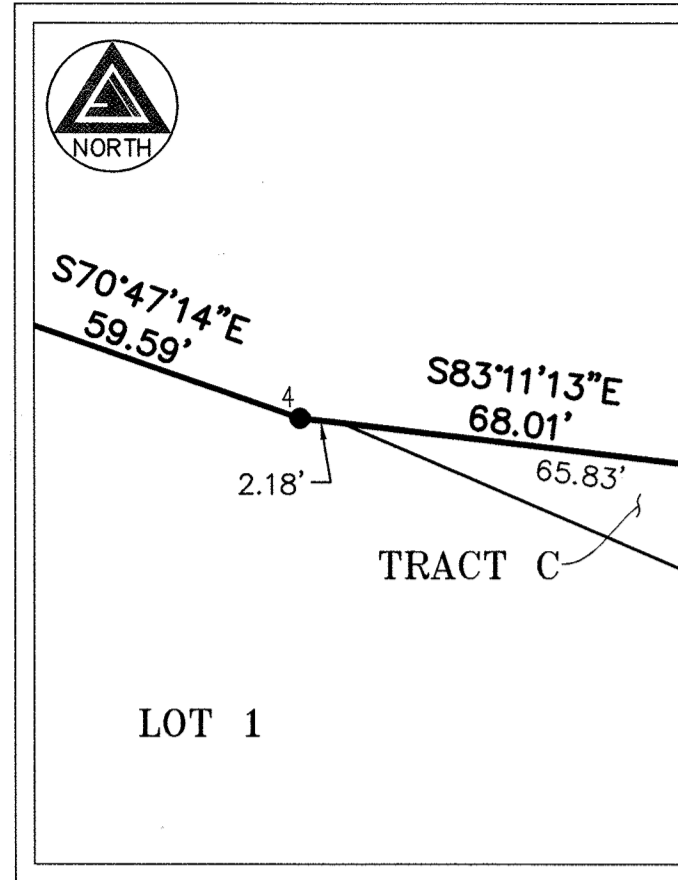


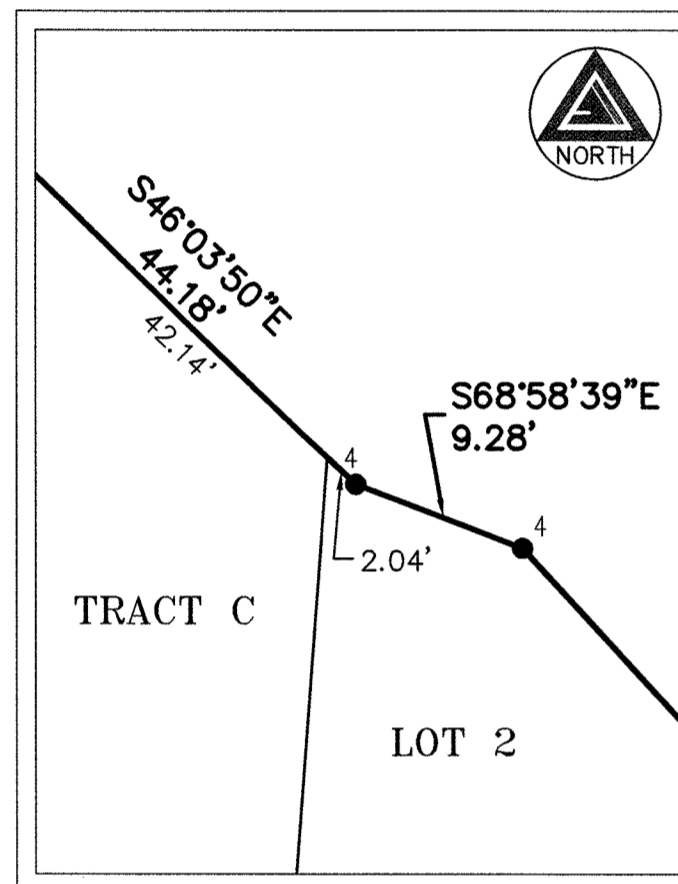


# THE MEADOWS FILING NO. 19-PARCEL 2N

AN UNPLATTED PARCEL OF LAND BEING A PART OF THE  
 SOUTHWEST QUARTER OF SECTION 21 AND THE NORTH HALF OF SECTION 28,  
 TOWNSHIP 7 SOUTH, RANGE 67 WEST OF THE SIXTH PRINCIPAL MERIDIAN,  
 TOWN OF CASTLE ROCK, COUNTY OF DOUGLAS, STATE OF COLORADO.  
 65.514 ACRES - PL22-0001



DETAIL "A"  
 SCALE: 1" = 10'



DETAIL "G"  
 SCALE: 1" = 20'

### MONUMENT SYMBOL LEGEND

- ◆ FOUND SECTION CORNER MONUMENT AS DESCRIBED
  - SET NO. 5 X 18" REBAR WITH 1-1/4" PINK PLASTIC CAP STAMPED "AZTEC PLS 38636"
  - FOUND NO. 5 REBAR WITH 1-1/4" YELLOW PLASTIC CAP STAMPED "PLS 37973"
  - FOUND NO. 5 REBAR WITH 1-1/2" ALUMINUM CAP STAMPED "TST 12046"
  - FOUND NO. 5 REBAR WITH 1-1/2" ALUMINUM CAP STAMPED "TST LS 16401"
  - FOUND NO. 5 REBAR WITH 1-1/4" PINK PLASTIC CAP STAMPED "AZTEC PLS 38636"
- ROW RIGHT-OF-WAY  
 U.E. UTILITY EASEMENT  
 D.E. DRAINAGE EASEMENT  
 A.E. ACCESS EASEMENT  
 REC. NO. RECEPTION NUMBER

SEE SHEET 5  
 FOR LINE &  
 CURVE TABLES

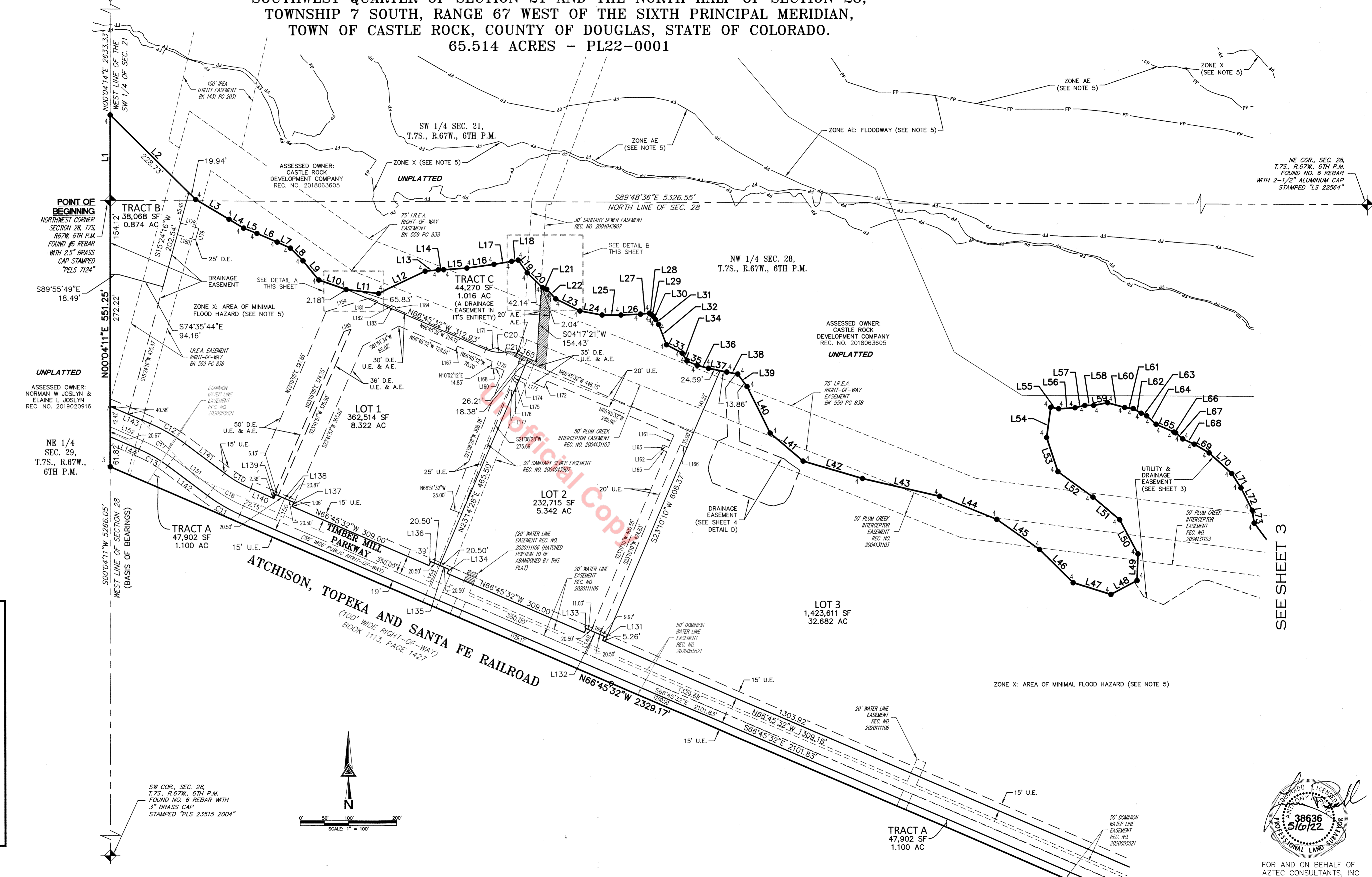
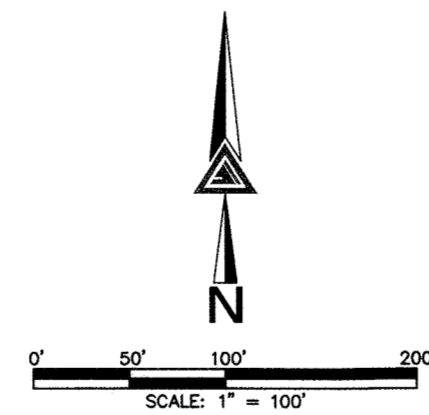
WEST 1/4 CORNER SECTION 21, T7S, R67W, 6TH P.M. FOUND 2 1/2" BRASS CAP, STAMPED "PLS 7134 1970" SET IN CONCRETE

POINT OF BEGINNING NORTHWEST CORNER SECTION 28, T7S, R67W, 6TH P.M. FOUND #6 REBAR WITH 2.5" BRASS CAP STAMPED "PLS 7124"

UNPLATTED ASSESSED OWNER: NORMAN W JOSLYN & ELAINE L JOSLYN REC. NO. 2019020916

NE 1/4 SEC. 29, T.7S., R.67W., 6TH P.M.

SW COR., SEC. 28, T.7S., R.67W., 6TH P.M. FOUND NO. 6 REBAR WITH 3" BRASS CAP STAMPED "PLS 23515 2004"



NE COR., SEC. 28, T.7S., R.67W., 6TH P.M. FOUND NO. 6 REBAR WITH 2-1/2" ALUMINUM CAP STAMPED "LS 22564"

SEE SHEET 3



FOR AND ON BEHALF OF  
 AZTEC CONSULTANTS, INC.

DETAIL SHEET  
 PROJECT NO.: PL22-0001  
 THE MEADOWS FILING NO. 19-PARCEL 2N SHEET 2 OF 5

**AZTEC**  
 CONSULTANTS, INC.  
 300 East Mineral Ave., Suite 1  
 Littleton, Colorado 80122  
 Phone: (303) 713-1898  
 Fax: (303) 713-1897  
 www.aztecconsultants.com

**DEVELOPER**  
 CASTLE ROCK DEVELOPMENT CO.  
 3033 EAST 1ST AVE., SUITE 305  
 DENVER, COLORADO 80206  
 (303) 394-5500

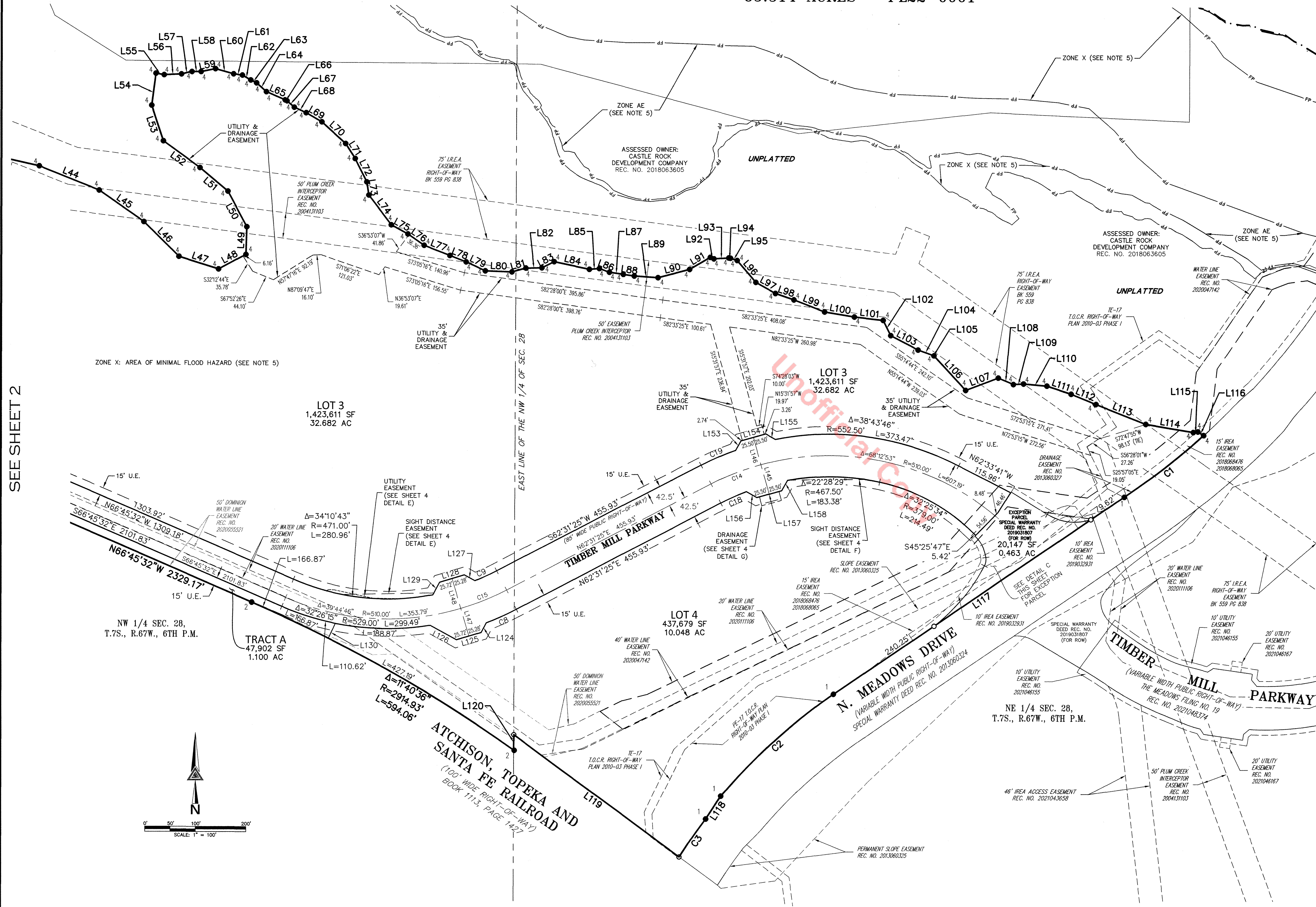
DATE OF PREPARATION:	2021-11-29
SCALE:	1" = 100'
SHEET 2 OF 5	

Aztec Proj. No.: 17021-14

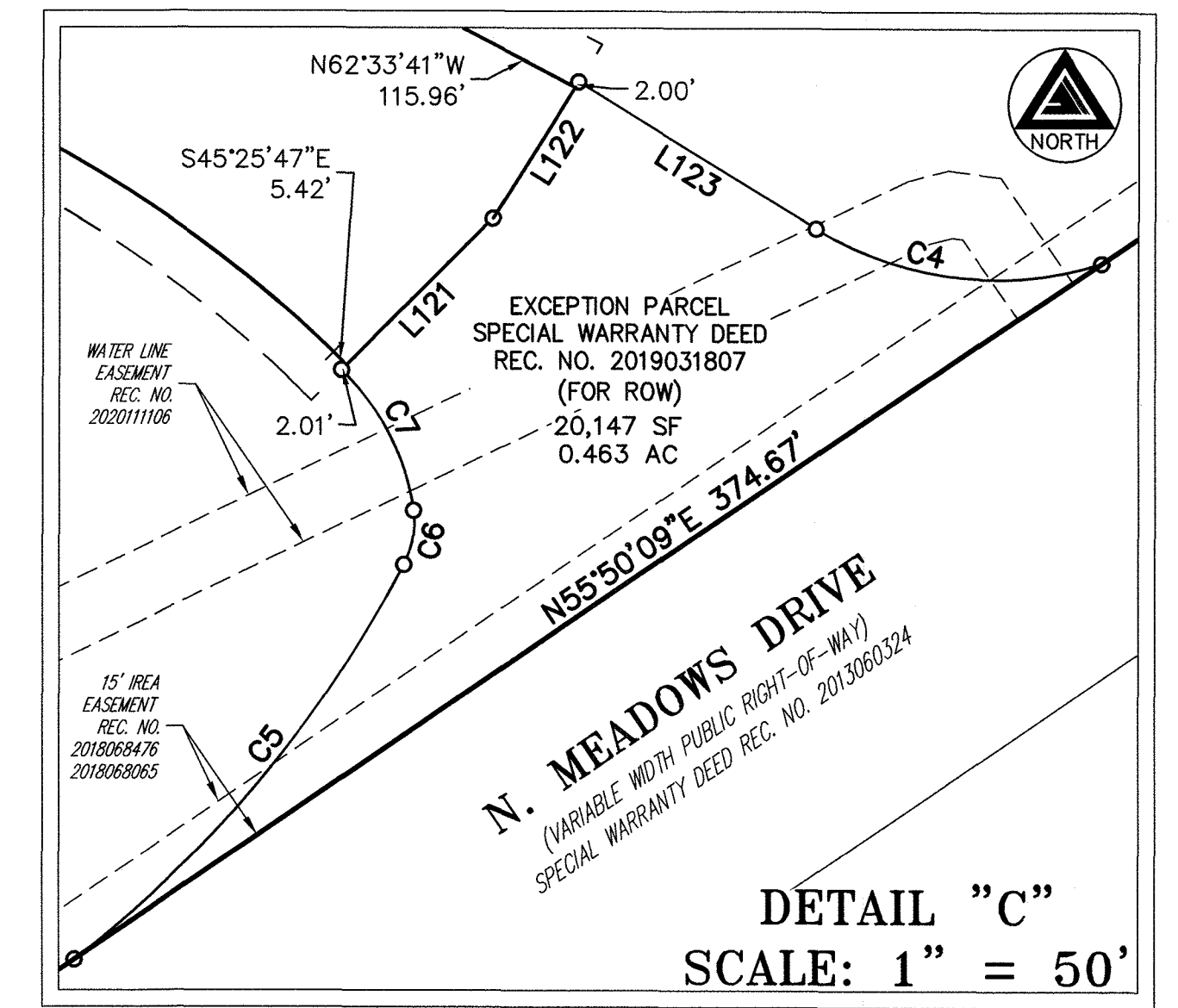
Drawn By: BAM

# THE MEADOWS FILING NO. 19-PARCEL 2N

AN UNPLATTED PARCEL OF LAND BEING A PART OF THE  
SOUTHWEST QUARTER OF SECTION 21 AND THE NORTH HALF OF SECTION 28,  
TOWNSHIP 7 SOUTH, RANGE 67 WEST OF THE SIXTH PRINCIPAL MERIDIAN,  
TOWN OF CASTLE ROCK, COUNTY OF DOUGLAS, STATE OF COLORADO.  
65.514 ACRES - PL22-0001



MONUMENT SYMBOL LEGEND	
	FOUND SECTION CORNER MONUMENT AS DESCRIBED
	SET NO. 5 X 18" REBAR WITH 1-1/4" PINK PLASTIC CAP STAMPED "AZTEC PLS 38636"
	FOUND NO. 5 REBAR WITH 1-1/4" YELLOW PLASTIC CAP STAMPED "PLS 37973"
	FOUND NO. 5 REBAR WITH 1-1/2" ALUMINUM CAP STAMPED "TST 12046"
	FOUND NO. 5 REBAR WITH 1-1/2" ALUMINUM CAP STAMPED "TST LS 16401"
	FOUND NO. 5 REBAR WITH 1-1/4" PINK PLASTIC CAP STAMPED "AZTEC PLS 38636"
ROW	RIGHT-OF-WAY
U.E.	UTILITY EASEMENT
D.E.	DRAINAGE EASEMENT
A.E.	ACCESS EASEMENT
REC. NO.	RECEPTION NUMBER



SEE SHEET 2

SEE SHEET 5 FOR LINE & CURVE TABLES



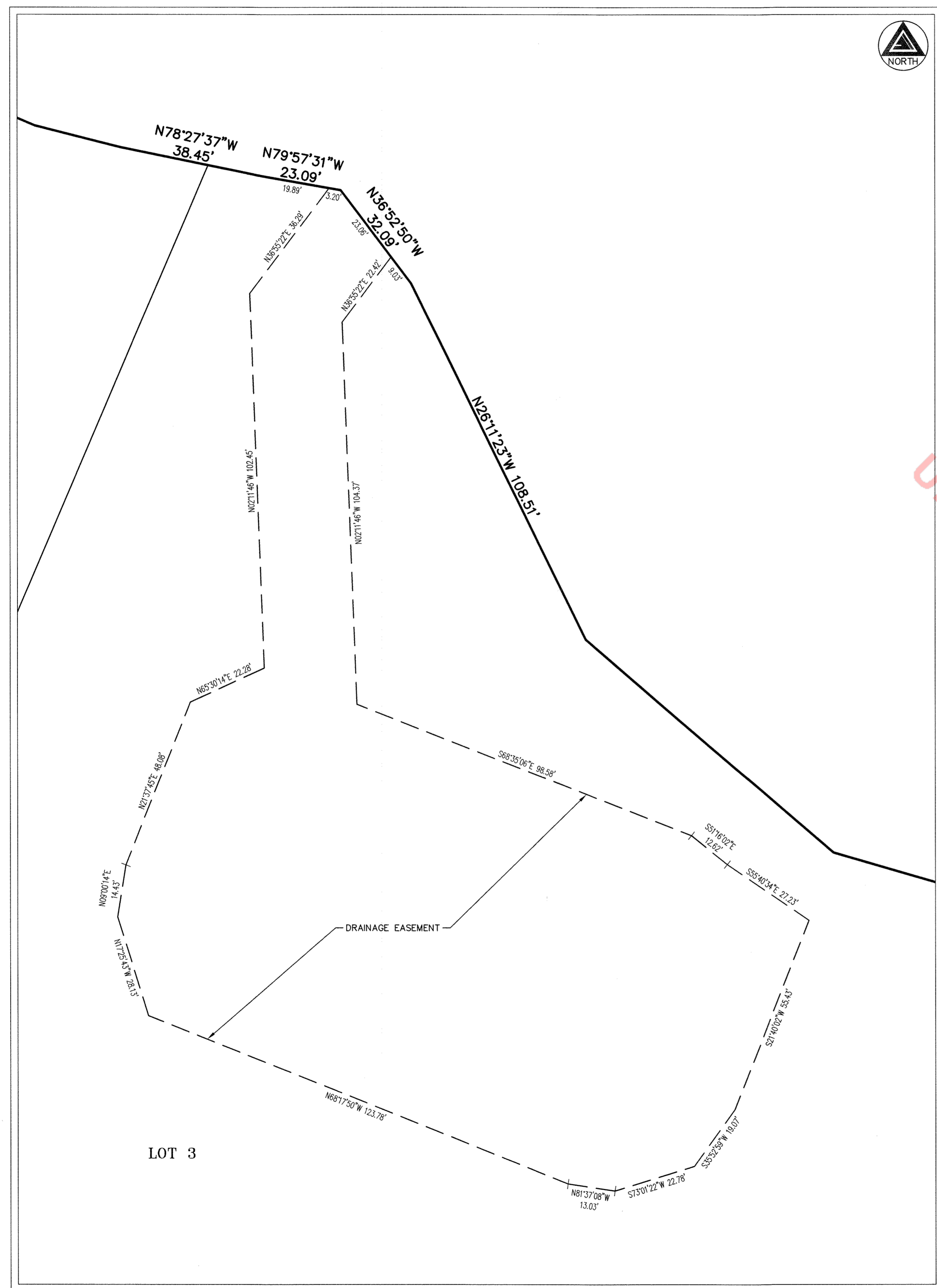
FOR AND ON BEHALF OF AZTEC CONSULTANTS, INC

DETAIL SHEET PROJECT NO.: PL22-0001 THE MEADOWS FILING NO. 19-PARCEL 2N SHEET 3 OF 5

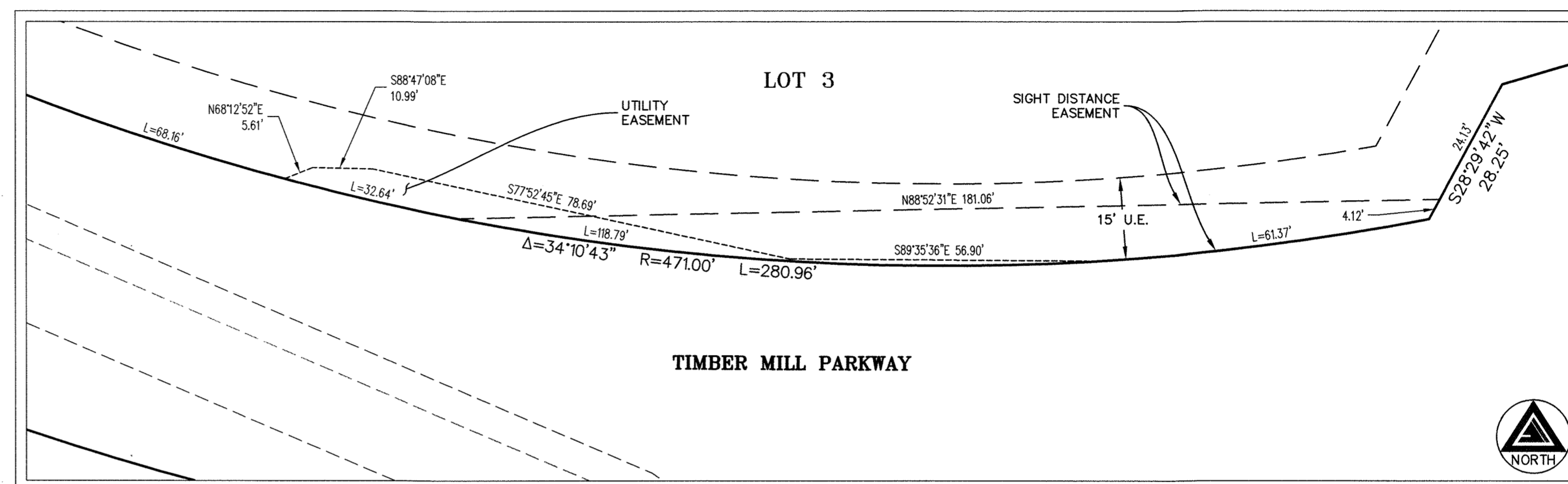
	300 East Mineral Ave., Suite 1 Littleton, Colorado 80122 Phone: (303) 713-1898 Fax: (303) 713-1899 www.aztecconsultants.com	<b>DEVELOPER</b> CASTLE ROCK DEVELOPMENT CO.	DATE OF PREPARATION: 2021-11-29 SCALE: 1" = 100' SHEET 3 OF 5
	AzTec Proj. No.: 17021-14 Drawn By: BAM	3033 EAST 1ST AVE., SUITE 305 DENVER, COLORADO 80206 (303) 394-5500	

# THE MEADOWS FILING NO. 19-PARCEL 2N

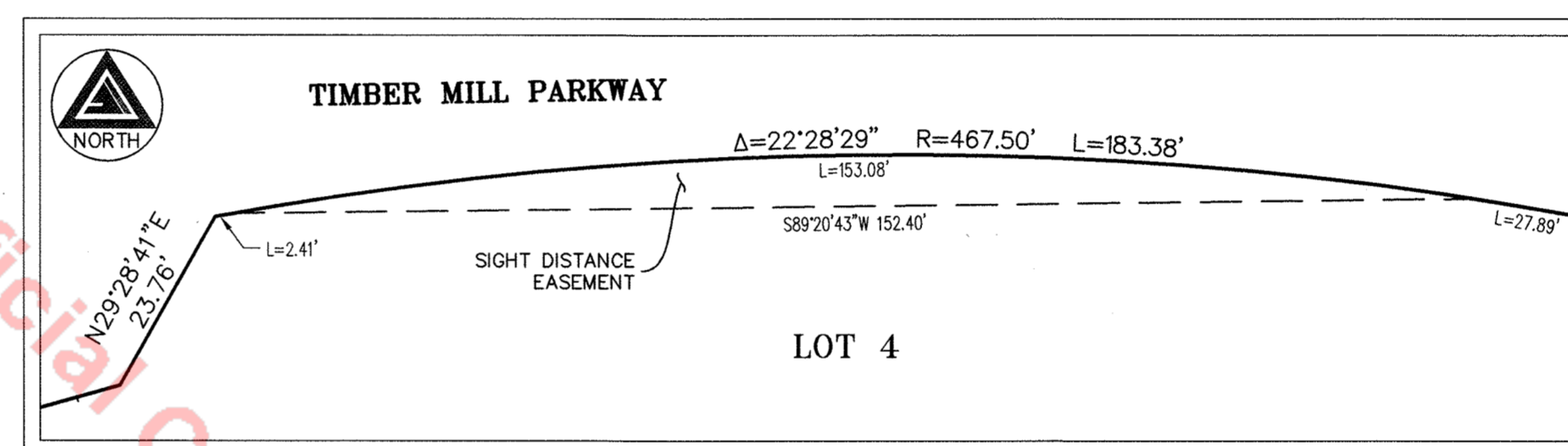
AN UNPLATTED PARCEL OF LAND BEING A PART OF THE  
 SOUTHWEST QUARTER OF SECTION 21 AND THE NORTH HALF OF SECTION 28,  
 TOWNSHIP 7 SOUTH, RANGE 67 WEST OF THE SIXTH PRINCIPAL MERIDIAN,  
 TOWN OF CASTLE ROCK, COUNTY OF DOUGLAS, STATE OF COLORADO.  
 65.514 ACRES - PL22-0001



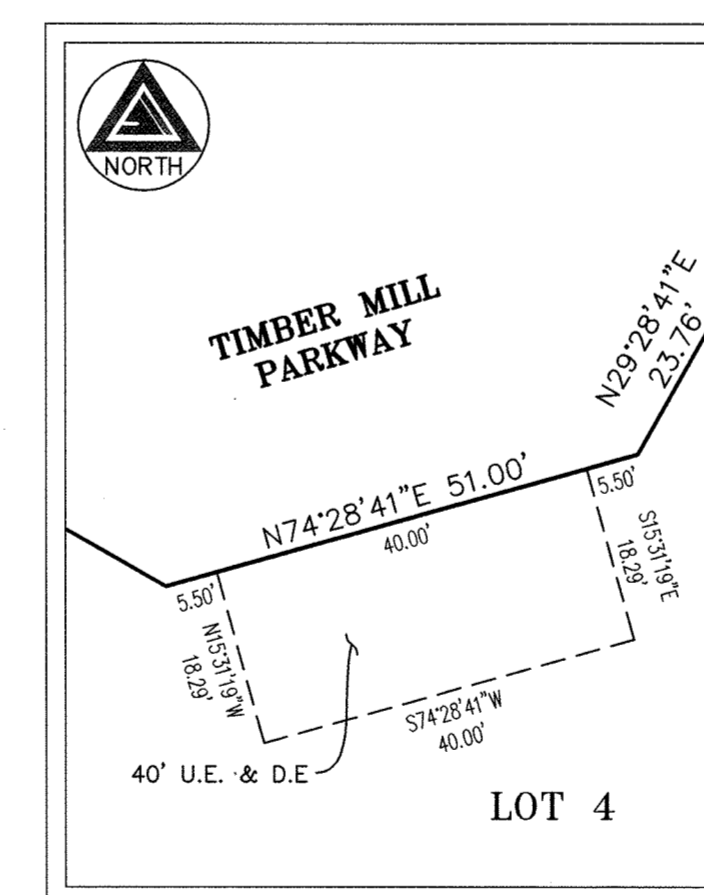
DETAIL "D"  
 SCALE: 1" = 20'



DETAIL "E"  
 SCALE: 1" = 20'

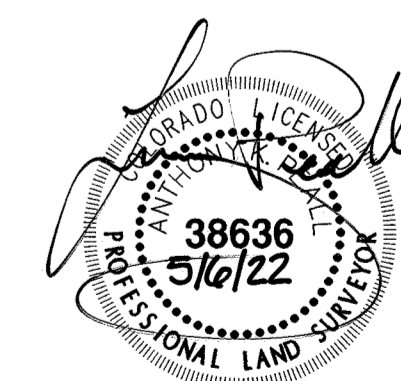


DETAIL "F"  
 SCALE: 1" = 20'



DETAIL "G"  
 SCALE: 1" = 20'

Unofficial Copy



FOR AND ON BEHALF OF  
 AZTEC CONSULTANTS, INC.

DETAIL SHEET  
 PROJECT NO.: PL22-0001  
 THE MEADOWS FILING NO. 19-PARCEL 2N SHEET 4 OF 5

 300 East Mineral Ave., Suite 1 Littleton, Colorado 80122 Phone: (303) 713-1898 Fax: (303) 713-1897 www.aztecconsultants.com AzTec Proj. No.: 17021-14 Drawn By:	DEVELOPER <b>CASTLE ROCK DEVELOPMENT CO.</b>	DATE OF PREPARATION: 2021-11-29
	3033 EAST 1ST AVE., SUITE 305 DENVER, COLORADO 80206 (303) 713-5500	SCALE: 1" = 20' SHEET 4 OF 5

# THE MEADOWS FILING NO. 19-PARCEL 2N

AN UNPLATTED PARCEL OF LAND BEING A PART OF THE  
SOUTHWEST QUARTER OF SECTION 21 AND THE NORTH HALF OF SECTION 28,  
TOWNSHIP 7 SOUTH, RANGE 67 WEST OF THE SIXTH PRINCIPAL MERIDIAN,  
TOWN OF CASTLE ROCK, COUNTY OF DOUGLAS, STATE OF COLORADO.  
65.514 ACRES - PL22-0001

LINE TABLE		
LINE	BEARING	LENGTH
L1	N00°04'14"E	176.92'
L2	S45°19'43"E	248.67'
L3	S59°06'55"E	80.05'
L4	S58°45'22"E	35.33'
L5	S68°36'08"E	29.75'
L6	S66°55'18"E	45.61'
L7	S65°08'34"E	30.22'
L8	S44°27'38"E	37.02'
L9	S39°36'36"E	51.49'
L10	S70°47'14"E	59.59'
L11	S83°11'13"E	68.01'
L12	N64°46'02"E	106.98'
L13	N84°30'43"E	27.31'
L14	N88°23'13"E	11.30'
L15	N85°53'18"E	48.16'
L16	N82°12'37"E	56.62'
L17	N80°37'48"E	37.35'
L18	N78°15'32"E	13.52'
L19	S35°24'57"E	32.35'
L20	S46°03'50"E	44.18'
L21	S68°58'39"E	9.28'
L22	S42°43'54"E	27.25'
L23	S63°27'10"E	56.13'
L24	S79°47'08"E	46.56'
L25	N90°00'00"E	38.87'

LINE TABLE		
LINE	BEARING	LENGTH
L26	N87°32'21"E	40.69'
L27	N83°25'23"E	18.49'
L28	S53°23'14"E	5.11'
L29	S48°40'28"E	5.18'
L30	S35°55'51"E	8.20'
L31	S32°55'32"E	11.85'
L32	S21°03'09"E	44.42'
L33	S62°22'21"E	36.83'
L34	S31°14'17"E	18.67'
L35	S67°01'33"E	23.12'
L36	S75°45'52"E	24.25'
L37	S78°27'37"E	38.45'
L38	S79°57'31"E	23.09'
L39	S36°52'50"E	32.09'
L40	S26°11'23"E	108.51'
L41	S49°27'27"E	89.64'
L42	S73°44'42"E	128.13'
L43	S77°04'21"E	163.95'
L44	S68°14'42"E	127.52'
L45	S55°00'44"E	107.99'
L46	S45°32'29"E	97.41'
L47	S72°36'31"E	82.11'
L48	N61°50'43"E	61.19'
L49	N02°03'18"E	54.71'
L50	N28°19'05"W	79.44'

LINE TABLE		
LINE	BEARING	LENGTH
L51	N49°48'09"W	72.38'
L52	N53°58'10"W	89.82'
L53	N18°18'25"W	74.06'
L54	N07°44'14"E	63.53'
L55	S79°59'59"E	16.53'
L56	N87°23'58"E	34.26'
L57	N76°20'20"E	21.11'
L58	N90°00'00"E	18.20'
L59	N78°41'55"E	29.17'
L60	S74°03'59"E	37.10'
L61	S83°05'39"E	17.49'
L62	S59°17'03"E	19.23'
L63	S64°09'04"E	12.73'
L64	S48°08'39"E	26.14'
L65	S66°37'52"E	40.38'
L66	S65°52'16"E	3.89'
L67	S48°50'10"E	19.17'
L68	S65°23'36"E	26.13'
L69	S60°04'28"E	35.62'
L70	S47°48'26"E	63.26'
L71	S32°33'49"E	35.29'
L72	S26°37'22"E	51.94'
L73	S08°26'00"E	26.47'
L74	S37°16'32"E	73.53'
L75	S61°16'45"E	37.60'

LINE TABLE		
LINE	BEARING	LENGTH
L76	S55°07'06"E	38.99'
L77	S68°58'39"E	54.89'
L78	S68°54'36"E	34.37'
L79	S65°20'24"E	41.90'
L80	S87°57'22"E	52.53'
L81	N74°38'07"E	28.77'
L82	N88°21'53"E	31.57'
L83	N63°27'10"E	27.21'
L84	S77°54'52"E	71.27'
L85	N85°36'17"E	19.89'
L86	S69°41'29"E	21.08'
L87	S81°34'46"E	27.69'
L88	S82°09'10"E	22.02'
L89	S86°11'20"E	47.15'
L90	N75°43'46"E	66.00'
L91	N59°33'14"E	47.10'
L92	S66°49'03"E	7.92'
L93	N85°46'01"E	29.46'
L94	S81°02'03"E	3.50'
L95	S71°14'08"E	14.05'
L96	S40°37'24"E	56.74'
L97	S61°00'58"E	44.24'
L98	S71°11'50"E	38.64'
L99	S68°53'05"E	65.41'
L100	S80°25'54"E	59.58'

LINE TABLE		
LINE	BEARING	LENGTH
L101	S83°39'40"E	57.33'
L102	S26°34'58"E	33.57'
L103	S62°43'07"E	60.81'
L104	S70°26'27"E	31.85'
L105	S65°34'22"E	1.76'
L106	S42°43'54"E	92.45'
L107	N69°27'31"E	68.91'
L108	S67°46'00"E	32.32'
L109	N87°08'23"E	20.09'
L110	S85°10'36"E	46.47'
L111	S71°45'12"E	50.35'
L112	S67°35'31"E	53.24'
L113	S68°38'49"E	105.97'
L114	S80°31'20"E	95.46'
L115	N82°27'03"E	9.24'
L116	S58°06'00"E	13.40'
L117	S55°50'09"W	694.54'
L118	S33°30'03"W	54.32'
L119	N53°46'31"W	406.38'
L120	S00°08'51"W	30.37'
L121	N44°34'34"E	65.05'
L122	N32°15'17"E	48.47'
L123	S58°30'22"E	84.13'
L124	N28°29'42"E	21.59'
L125	N73°29'42"E	51.00'

LINE TABLE		
LINE	BEARING	LENGTH
L126	S61°30'18"E	58.80'
L127	N61°30'18"W	23.76'
L128	S73°29'42"W	51.00'
L129	S28°29'42"W	28.25'
L130	S24°51'25"W	32.31'
L131	N23°14'28"E	9.00'
L132	N66°45'32"W	41.00'
L133	S23°14'28"W	9.00'
L134	N23°14'28"E	9.00'
L135	N66°45'32"W	41.00'
L136	S23°14'28"W	9.00'
L137	N23°14'28"E	9.00'
L138	N66°45'32"W	41.00'
L139	S23°14'28"W	9.00'
L140	N66°45'32"W	51.65'
L141	N53°19'45"W	102.80'
L142	S53°19'45"E	102.80'
L143	N66°45'32"W	90.38'
L144	S66°45'32"E	65.56'
L145	S15°31'19"E	61.22'
L146	S15°31'19"E	56.26'
L147	N16°30'18"W	56.28'
L148	N16°30'18"W	61.20'
L149	N23°14'28"E	48.00'
L150	N23°14'28"E	48.00'

LINE TABLE		
LINE	BEARING	LENGTH
L151	S53°19'45"E	102.80'
L152	S66°45'32"E	73.69'
L153	S29°28'41"W	21.59'
L154	S74°28'41"W	51.00'
L155	N60°31'19"W	21.59'
L156	S60°31'19"E	23.76'
L157	N74°28'41"E	51.00'
L158	N29°28'41"E	23.76'
L159	N72°49'18"E	94.99'
L160	N04°36'19"E	4.54'
L161	S23°14'28"W	27.60'
L162	S66°45'52"E	13.07'
L163	N23°14'08"E	10.00'
L164	N23°14'28"E	48.00'
L165	N66°45'32"W	44.60'
L166	S66°49'50"E	15.22'
L167	N23°14'28"E	10.00'
L168	N82°40'44"W	10.42'
L169	S66°45'32"E	20.00'
L170	S66°45'32"E	18.02'
L171	N68°34'21"E	10.98'
L172	S23°14'28"W	15.00'
L173	N66°45'32"W	64.77'
L174	S23°14'28"W	12.15'
L175	S66°45'32"E	10.71'

LINE TABLE		
LINE	BEARING	LENGTH
L176	S23°14'28"W	20.00'
L177	N66°45'32"W	10.10'
L178	S73°52'15"E	39.54'
L179	N16°07'45"E	25.00'
L180	S73°52'15"E	39.22'
L181	S66°45'32"E	46.97'
L182	N23°14'28"E	3.00'
L183	S66°45'32"E	10.00'
L184	N23°14'28"E	3.00'
L185	N72°49'18"E	15.01'

CURVE TABLE				
CURVE	DELTA	RADIUS	LENGTH	CHORD INFO
C1	7°53'49"	1448.00'	199.58'	S51°53'15"W, 199.42'
C2	15°38'36"	1100.00'	300.33'	S48°00'51"W, 299.40'
C3	4°46'42"	1095.00'	91.32'	S34°58'44"W, 91.30'
C4	49°20'08"	104.00'	89.55'	S83°10'27"E, 86.81'
C5	24°40'56"	362.21'	156.04'	N39°59'16"E, 154.83'
C6	35°46'46"	27.00'	16.86'	N09°44'58"E, 16.59'
C7	38°04'34"	73.00'	48.51'	N27°10'42"W, 47.62'
C8	6°45'47"	552.50'	65.21'	N65°54'18"E, 65.18'
C9	5°48'27"	467.50'	47.39'	N65°25'39"E, 47.37'
C10	13°25'47"	271.00'	63.52'	S60°02'39"E, 63.38'
C11	13°25'47"	329.00'	77.12'	S60°02'39"E, 76.94'

CURVE TABLE				
CURVE	DELTA	RADIUS	LENGTH	CHORD INFO
C12	13°25'47"	349.00'	81.80'	N60°02'39"W, 81.62'
C13	13°25'47"	291.00'	68.21'	N60°02'39"W, 68.05'
C14	11°57'16"	510.00'	106.41'	S68°30'03"W, 106.21'
C15	10°58'18"	510.00'	97.66'	N68°00'34"E, 97.51'
C16	13°25'47"	310.00'	72.66'	S60°02'39"E, 72.50'
C17	13°25'47"	310.00'	72.66'	N60°02'39"W, 72.50'
C18	6°45'47"	467.50'	55.18'	S65°54'19"W, 55.15'
C19	7°43'24"	552.50'	74.47'	S66°23'07"W, 74.42'
C20	32°29'27"	75.50'	42.81'	N83°00'15"W, 42.24'
C21	32°29'27"	39.50'	22.40'	N83°00'15"W, 22.10'



FOR AND ON BEHALF OF  
AZTEC CONSULTANTS, INC.

LINE & CURVE TABLES  
PROJECT NO.: PL22-0001  
THE MEADOWS FILING NO. 19-PARCEL 2N SHEET 5 OF 5

<p><small>300 East Mineral Ave., Suite 1 Littleton, Colorado 80122 Phone: (303) 713-1998 Fax: (303) 713-1997 www.aztecconsultants.com</small></p> <p>AzTec Proj. No.: 17021-14      Drawn By: BAM</p>	<p><b>DEVELOPER</b> CASTLE ROCK DEVELOPMENT CO.</p>	<p>DATE OF PREPARATION: 2021-11-29</p>
	<p>3033 EAST 1ST AVE., SUITE 105 DENVER, COLORADO 80206 (303) 394-5500</p>	<p>SCALE: N/A</p>
	<p>SHEET 5 OF 5</p>	