

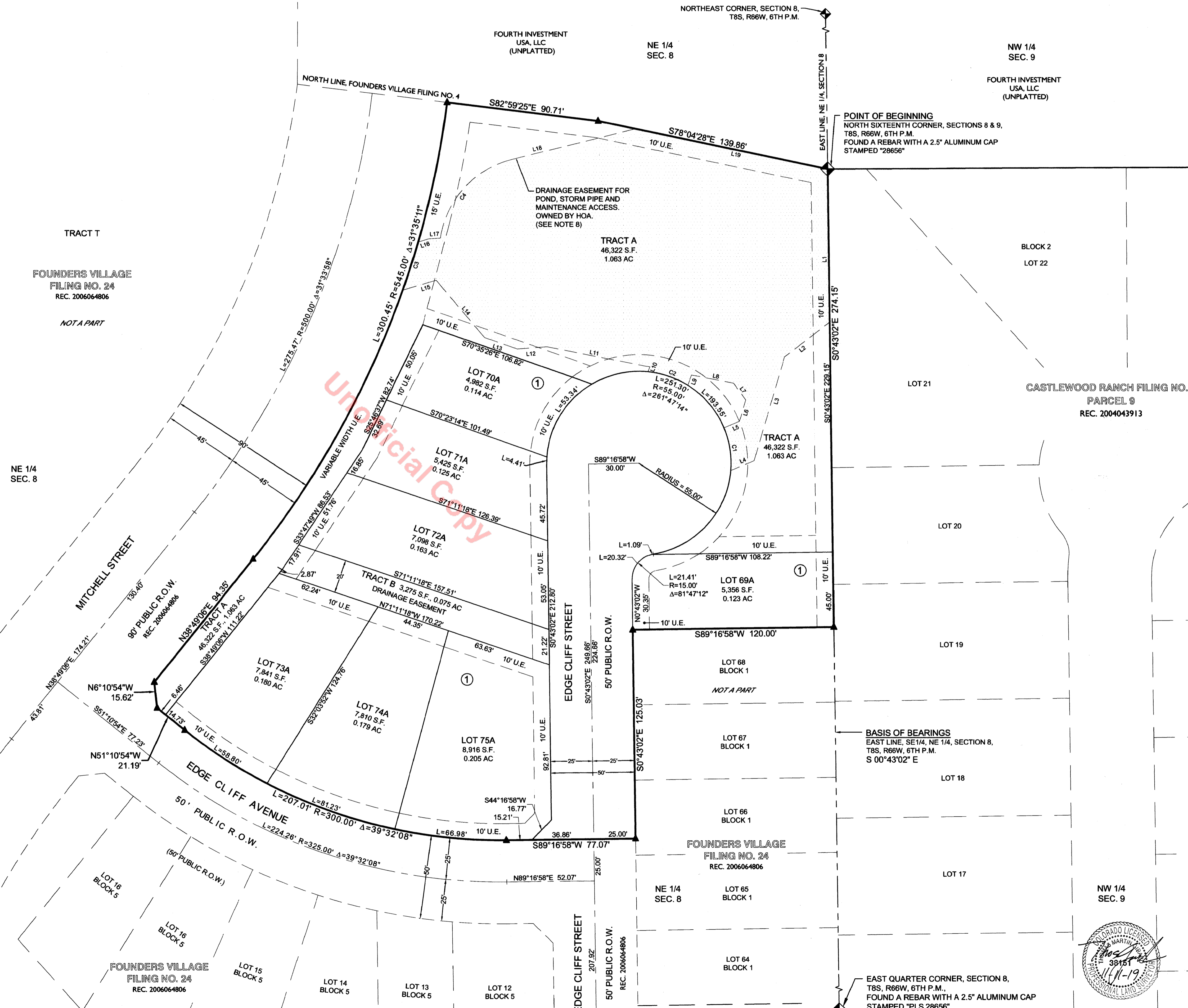
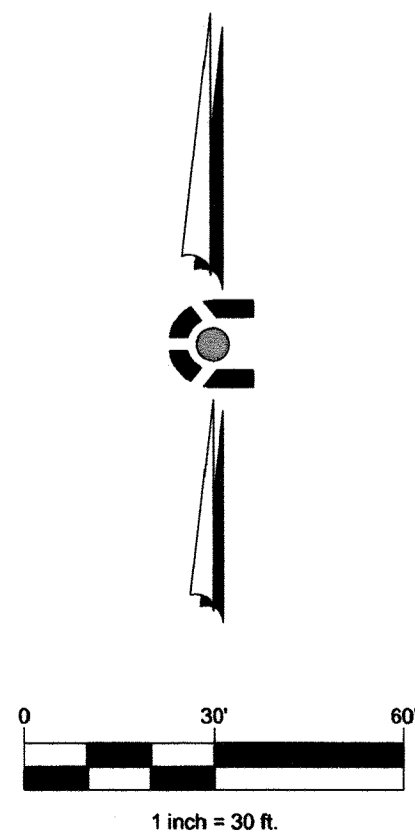
FOUNDERS VILLAGE FILING NO. 24 - AMENDMENT NO. 1

A REPLAT OF FOUNDERS VILLAGE FILING NO. 24
 A PART OF THE NORTHEAST QUARTER OF SECTION 8, TOWNSHIP 8 SOUTH, RANGE 66 WEST OF THE SIXTH PRINCIPAL MERIDIAN,
 TOWN OF CASTLE ROCK, COUNTY OF DOUGLAS, STATE OF COLORADO

LEGEND	
	FOUND SECTION CORNER MONUMENT AS DESCRIBED
	SET #5 REBAR WITH YELLOW PLASTIC CAP STAMPED "PLS 38151"
	U.E. UTILITY EASEMENT
	R.O.W. RIGHT-OF-WAY

CURVE TABLE					
CURVE #	RADIUS	LENGTH	DELTA	CHORD BEARING	CHORD LENGTH
C1	55.00'	25.95'	27°02'08"	N8°59'24"W	25.71'
C2	55.00'	25.23'	26°16'54"	N71°04'01"W	25.01'
C3	545.09'	30.32'	3°11'13"	N17°48'21"E	30.32'
C4	57.00'	67.40'	67°45'03"	N42°07'19"E	63.54'

LINE TABLE		
LINE #	LENGTH	DIRECTION
L1	91.65'	S 0°43'01" E
L2	34.07'	S 52°18'44" W
L3	64.62'	S 16°20'18" W
L4	15.14'	S 67°29'31" W
L5	10.00'	N 67°29'31" E
L6	13.37'	N 16°20'18" E
L7	12.50'	N 35°55'59" W
L8	25.47'	N 78°53'37" W
L9	6.54'	S 20°22'49" W
L10	3.09'	N 20°22'49" E
L11	62.50'	N 78°53'37" W
L12	17.78'	S 85°43'08" W
L13	20.69'	N 70°35'26" W
L14	44.75'	N 40°04'42" W
L15	20.79'	S 73°21'40" W
L16	6.55'	N 73°21'40" E
L17	7.02'	N 86°38'35" E
L18	75.94'	N 75°59'47" E
L19	117.16'	S 78°04'28" E



CIVIL ENGINEERING CONSULTING
 LAND SURVEYING
 NATURAL RESOURCES
 303.703.4444
 1950 W. Littleton Blvd., Ste. 109
 Littleton, CO 80120

CORE CONSULTANTS

NO.	DESCRIPTION	DATE	BY
1	COUNTY REVIEW COMMENTS	7/19/19	JAG
2	COUNTY REVIEW 2nd COMMENTS	7/30/19	JAG

FOUNDERS VILLAGE NO. 24 - AMENDMENT NO. 1
 SECTION 8, T3S, R66W, 6TH P.M.
 CASTLE ROCK, DOUGLAS COUNTY, COLORADO

RELEASE: 05/03/19
 DESIGNED: RCY
 CAD: DCB
 QA/QC: TMC

JOB NO. 18-007

SHEET 2 OF 2