

# PLAT IDENTIFICATION SHEET

**RECEPTION #: 9339607**

**DATE: 08-27-93**

**NUMBER OF PGS: 2**

**NAME OF PLAT: DOUGLAS COUNTY JUSTICE  
CENTER #1**

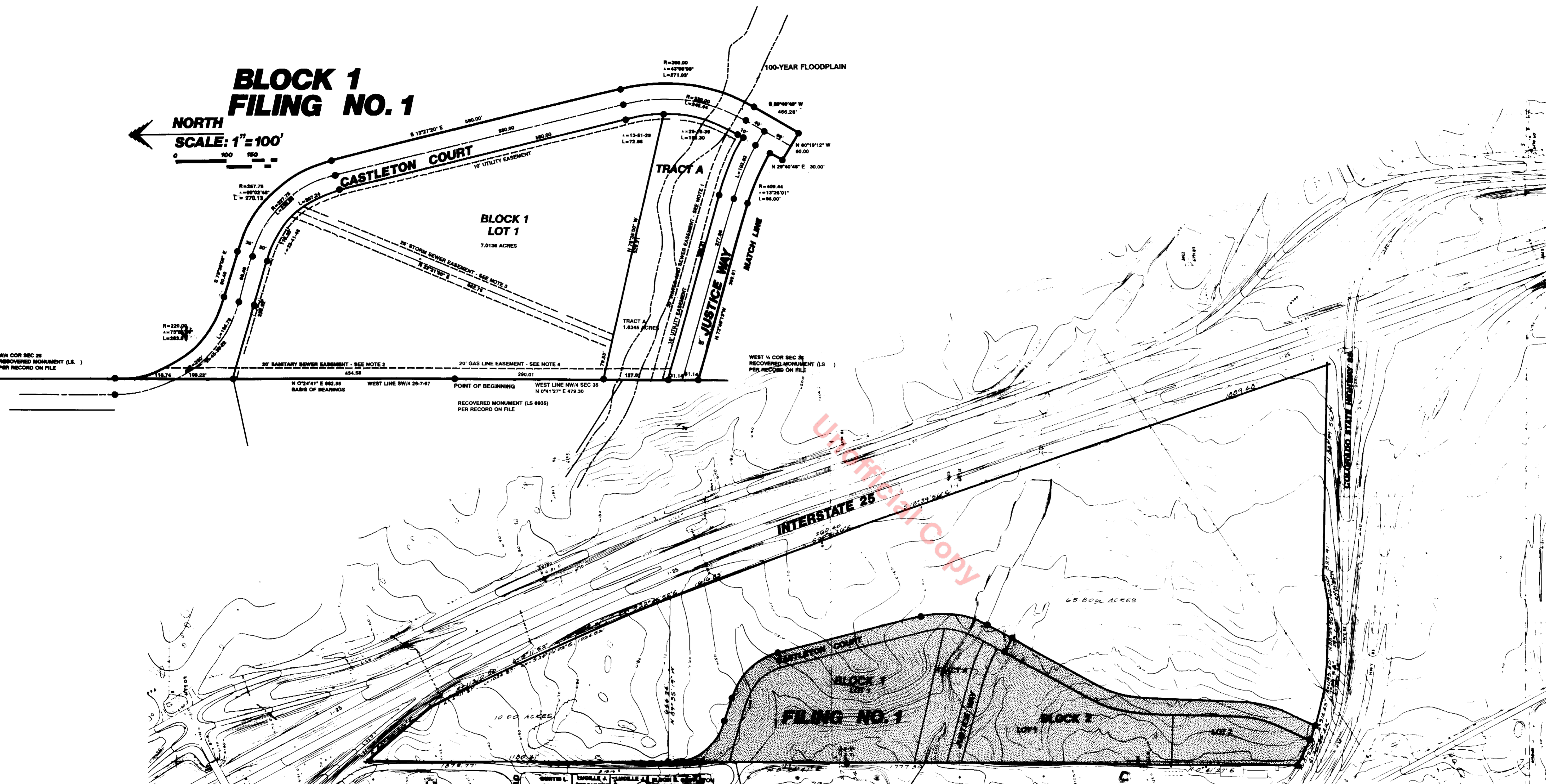
**MISCELLANEOUS COMMENTS:**



# FINAL PLAT OF DOUGLAS COUNTY JUSTICE CENTER FILING NO.1

## BLOCK 1 FILING NO.1

← NORTH  
SCALE: 1" = 100'



### NOTES

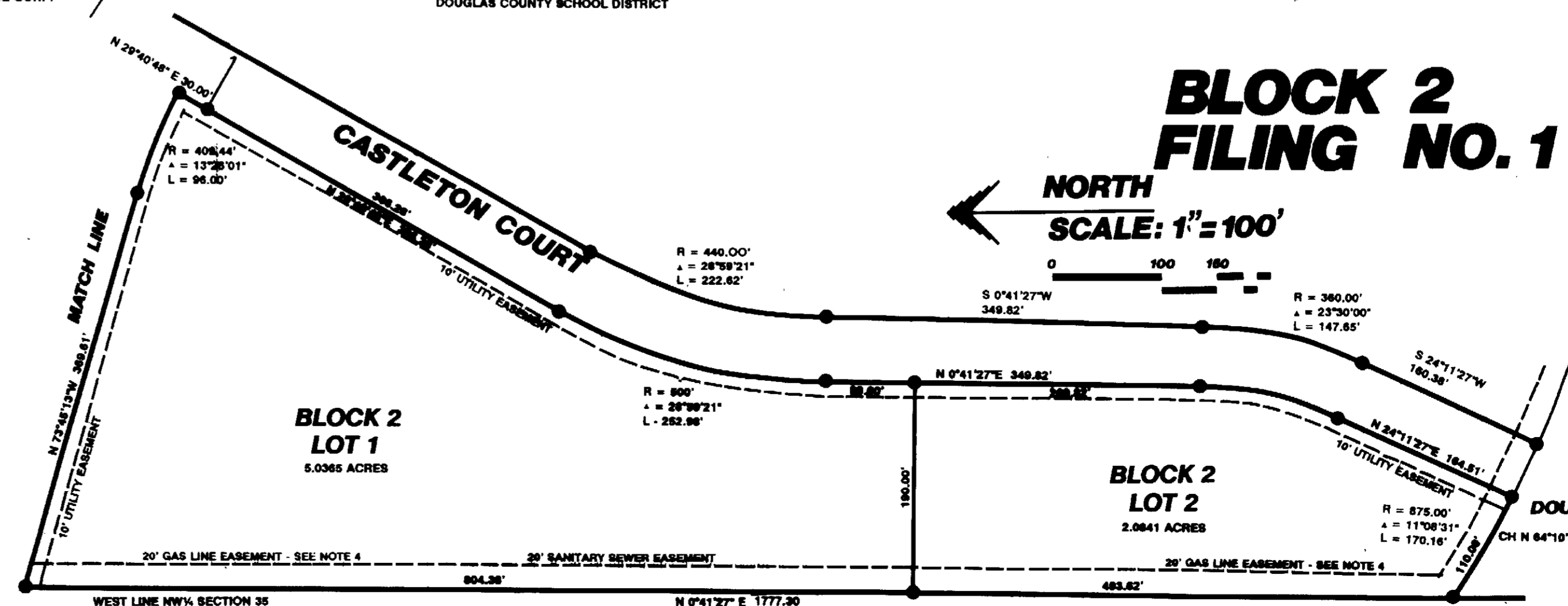
1. 30' PERPETUAL, NON-EXCLUSIVE EASEMENT TO CONSTRUCT, OPERATE, MAINTAIN, CONTROL, USE, REPLACE, RECONSTRUCT, AND REPAIR WATER AND SEWER MAINS AND RELATED EQUIPMENT AND APPURTENANCES.
2. 20' PERPETUAL, NON-EXCLUSIVE EASEMENT TO CONSTRUCT, OPERATE, MAINTAIN, CONTROL, USE, REPLACE, RECONSTRUCT, AND REPAIR A SEWER MAIN AND RELATED EQUIPMENT AND APPURTENANCES.
3. 25' PERPETUAL, NON-EXCLUSIVE EASEMENT TO CONSTRUCT, OPERATE, MAINTAIN, CONTROL, USE, REPLACE, RECONSTRUCT, AND REPAIR A STORM SEWER MAIN AND RELATED EQUIPMENT AND APPURTENANCES.
4. A 12" GAS MAIN IS LOCATED WITHIN THIS EASEMENT. ITS PRECISE LOCATION SHOULD BE DETERMINED BEFORE ANY OTHER CONSTRUCTION OCCURS WITHIN THIS EASEMENT.

REFER TO THE DEVELOPMENT AGREEMENT.

← NORTH  
SCALE: 1" = 200'

## BLOCK 2 FILING NO.1

← NORTH  
SCALE: 1" = 100'



0001.7  
0001.7  
0001.7  
0001.7  
0001.7  
0001.7  
0001.7