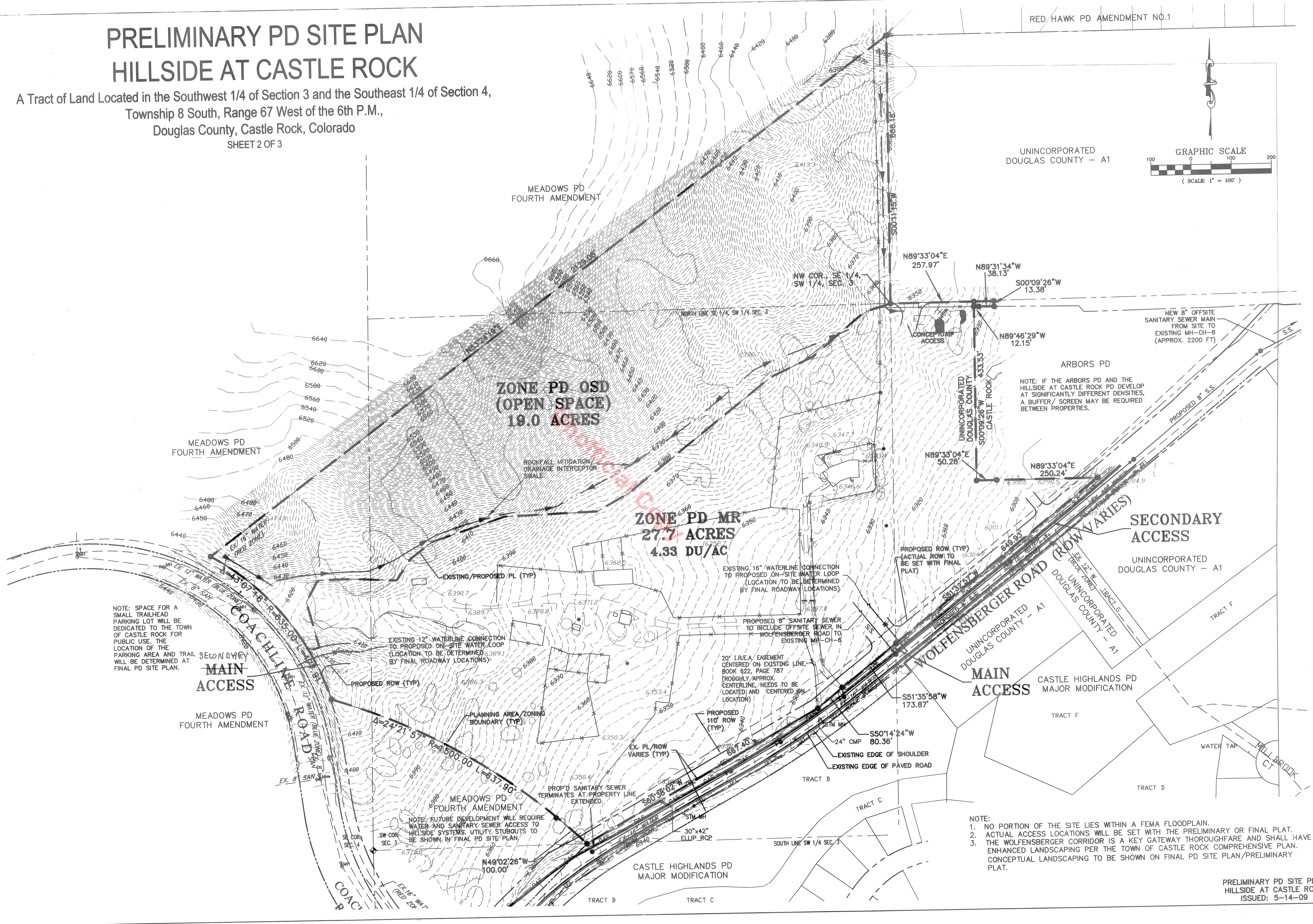
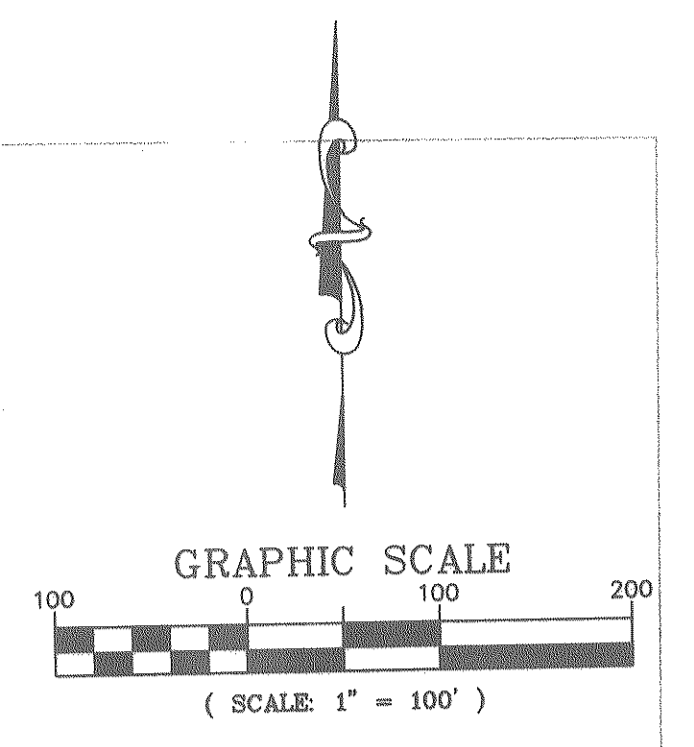


PRELIMINARY PD SITE PLAN HILLSIDE AT CASTLE ROCK

A Tract of Land Located in the Southwest 1/4 of Section 3 and the Southeast 1/4 of Section 4,
Township 8 South, Range 67 West of the 6th P.M.,
Douglas County, Castle Rock, Colorado
SHEET 2 OF 3



NOTE: SPACE FOR A SMALL TRAILHEAD PARKING LOT WILL BE DEDICATED TO THE TOWN OF CASTLE ROCK FOR PUBLIC USE. THE LOCATION OF THE PARKING AREA AND TRAIL WILL BE DETERMINED AT FINAL PD SITE PLAN.

NOTE: FUTURE DEVELOPMENT WILL REQUIRE WATER AND SANITARY SEWER ACCESS TO HILLSIDE SYSTEMS. UTILITY STUBOUTS TO BE SHOWN IN FINAL PD SITE PLAN.

NOTE:
1. NO PORTION OF THE SITE LIES WITHIN A FEMA FLOODPLAIN.
2. ACTUAL ACCESS LOCATIONS WILL BE SET WITH THE PRELIMINARY OR FINAL PLAT.
3. THE WOLFENBERGER CORRIDOR IS A KEY GATEWAY THOROUGHFARE AND SHALL HAVE ENHANCED LANDSCAPING PER THE TOWN OF CASTLE ROCK COMPREHENSIVE PLAN. CONCEPTUAL LANDSCAPING TO BE SHOWN ON FINAL PD SITE PLAN/PRELIMINARY PLAT.

\\08510-1\19\dwg\pdp Site Plan\CURRENT\PD 02-03.dwg, 1/20/2011 12:38:37 PM, Para-view-Oct.pcd

