



CRYSTAL VALLEY/RHYOLITE

10K LOOP



CRgov.com/trails • 303-814-7444



Fast Facts about Crystal Valley/Rhyolite Loop

Trail length: 6.1 miles

Trail rating: Easy

Trail surface: soft surface trails up and around the mesa, paved trails in the park and sidewalks through the neighborhood

Wildlife highlights: Deer, snakes, water fowl

Planned and mapped
by James Kennedy,
Troop 260 Eagle Scout
Project 2014



ADOPTION

Available

For maps of other
trail routes, scan
this QR code



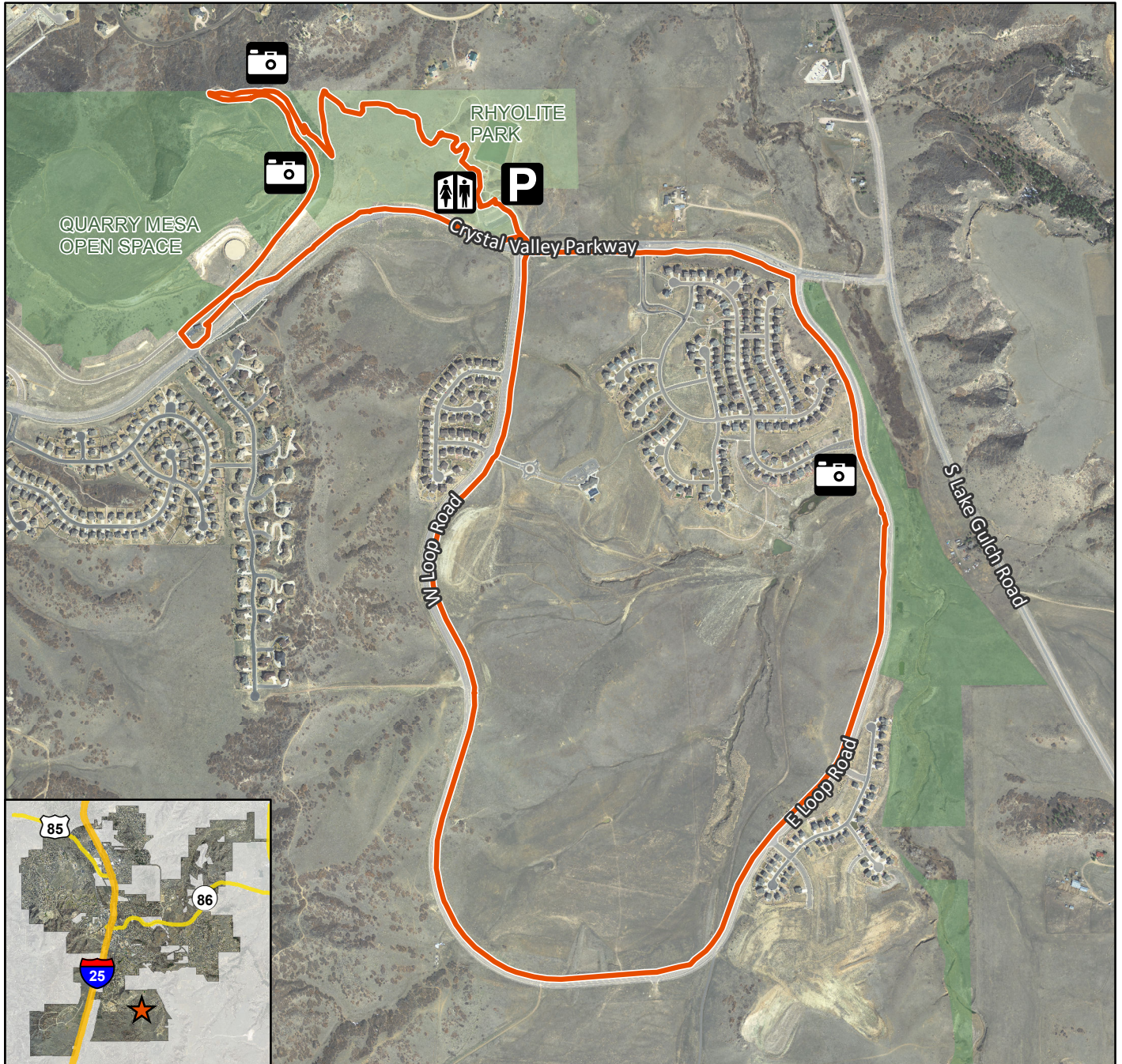
The combination of native trail and pavement makes this ideal for running, biking or walking the dog. This 6.1 mile route offers sweeping views of the Front Range.

Madge Trail goes through prairie grasses and has gentle switchbacks to the top of the mesa then down again to explore the nearby neighborhood. Stay on the wide sidewalks and keep an eye out for blooming wild flowers.

This is a great trail for families with older children. In the summer, go early before the heat of the day begins because there is no shade.

Restrooms available at Rhyolite Regional Park.

Crystal Valley/Rhyolite Park 10k Trail Route



- Parking
- Restroom
- Scenic Area
- Trail Route
- Park
- Open Space

